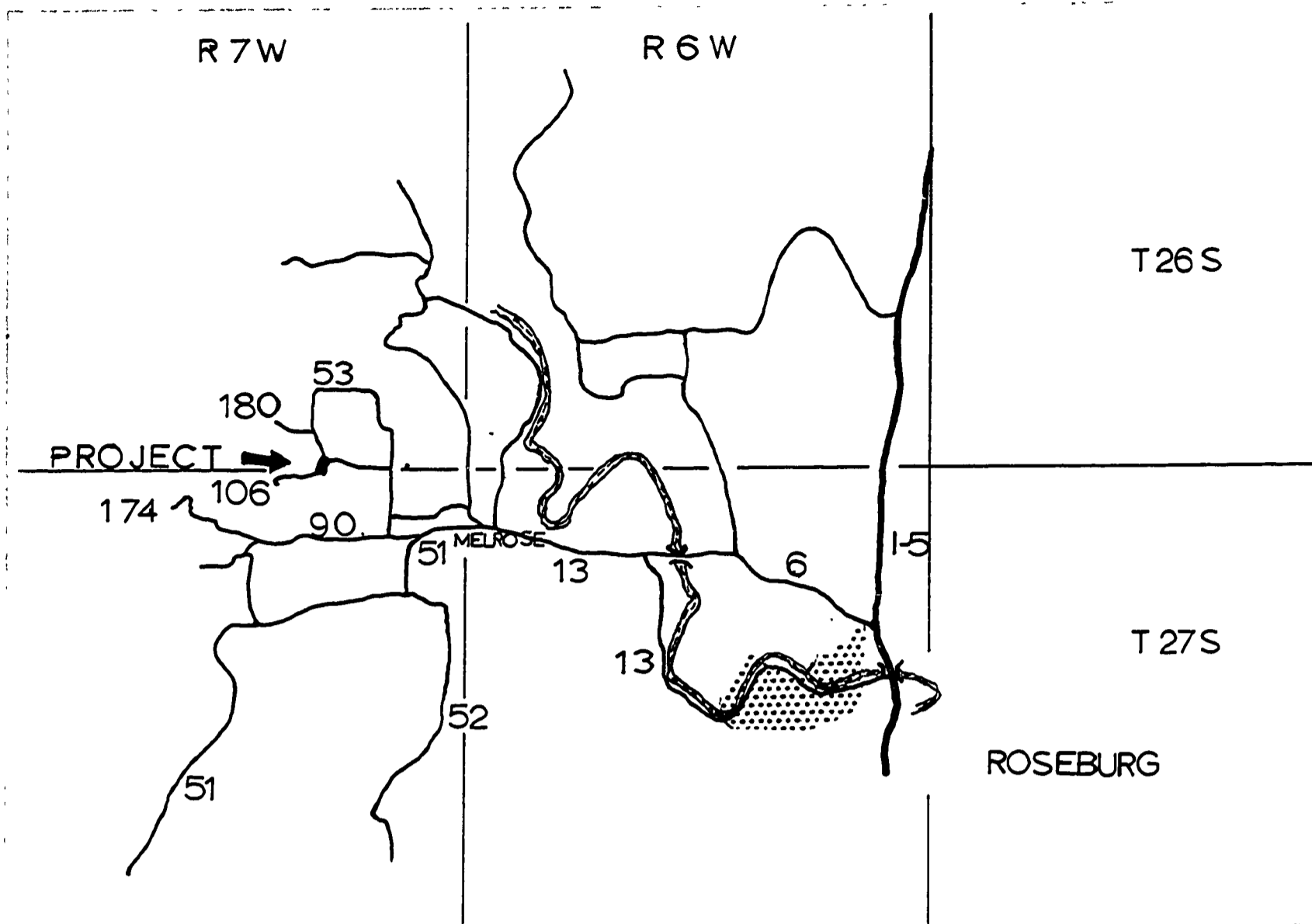


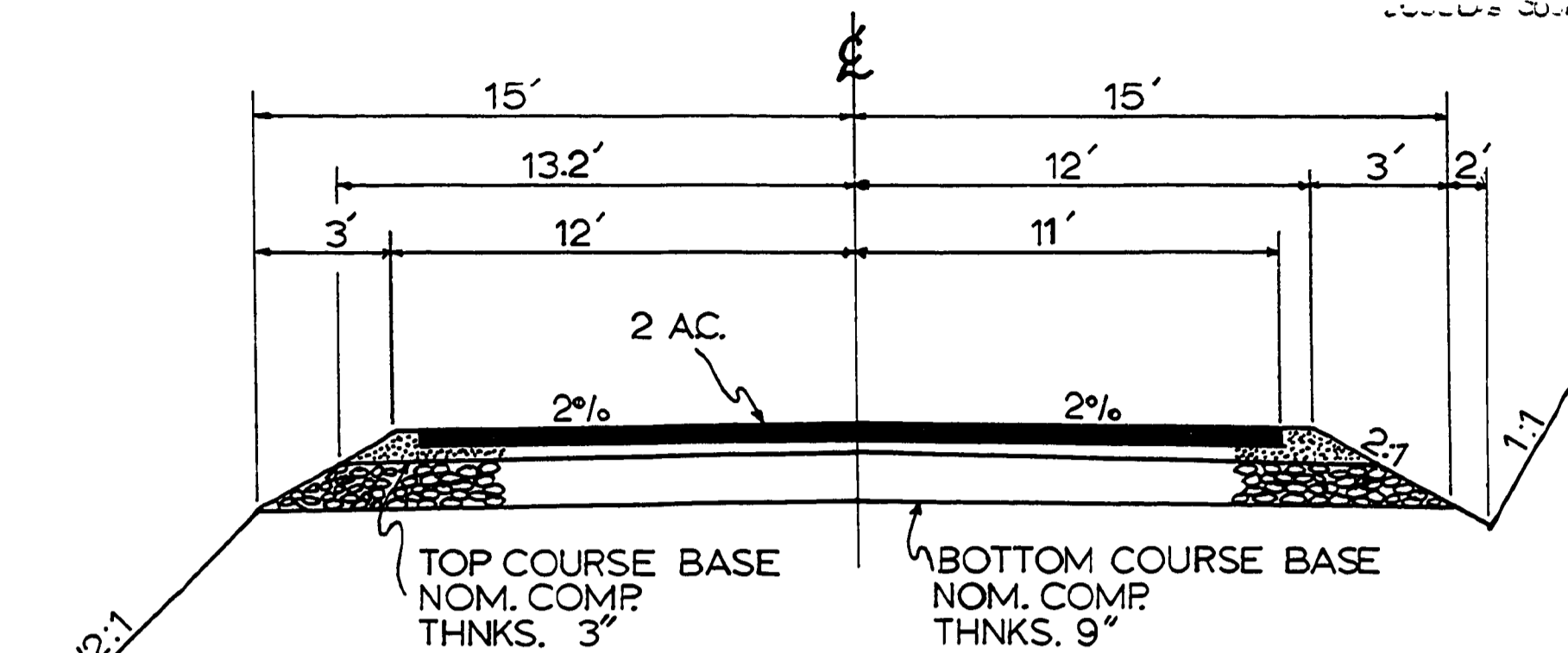
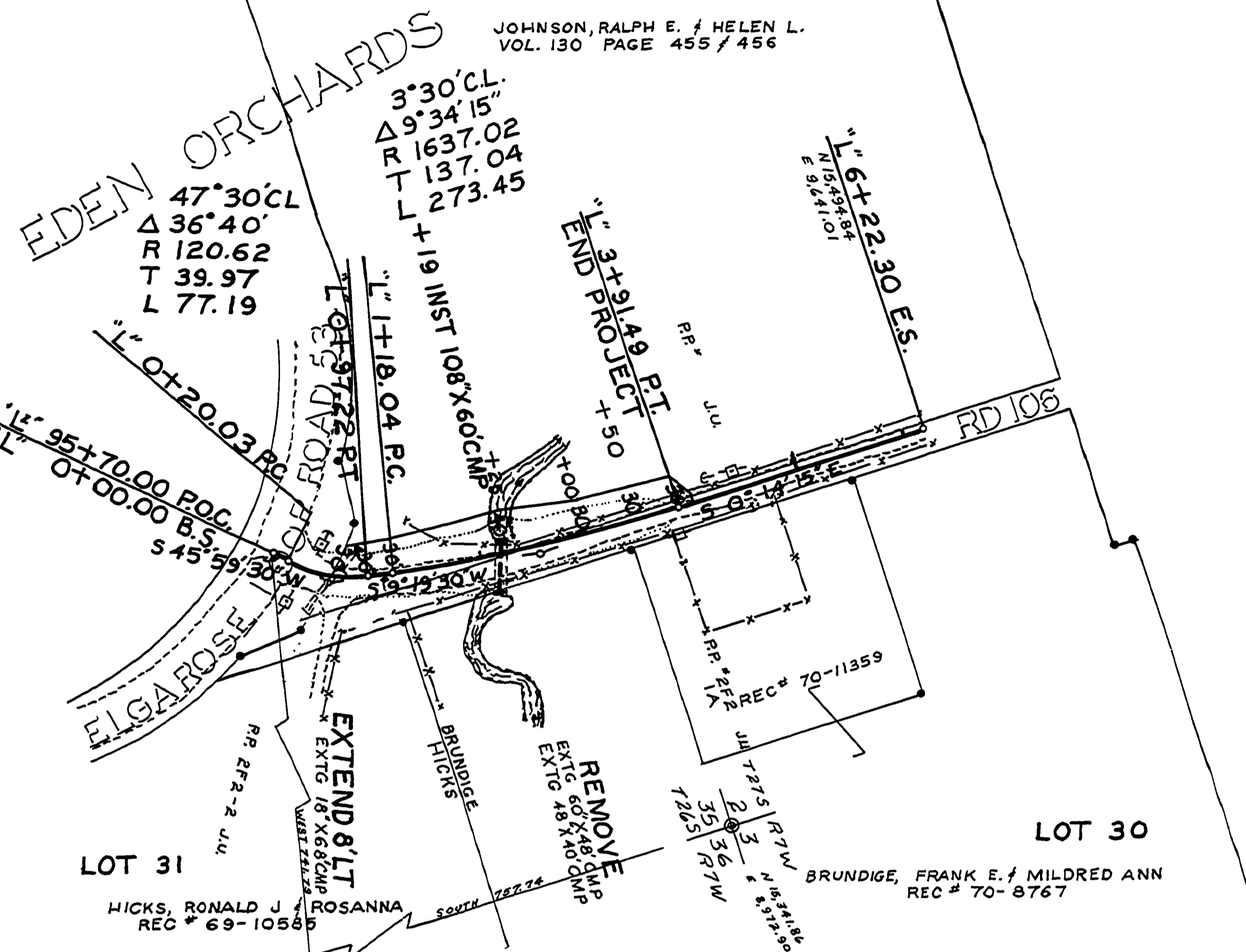
FILED
RECEIVED
AUG 14 1973
COUNTY SURVEYOR
DOUGLAS COUNTY, ORE



VICINITY MAP

LOT 26
ANDERSON, VERNER J. & KATHERYN M.
HUNSAKER, HOWARD N. & HAZEL G.
REC. #69-8800

LOT 27
JOHNSON, RALPH E. & HELEN L.
VOL. 130 PAGE 455 / 456



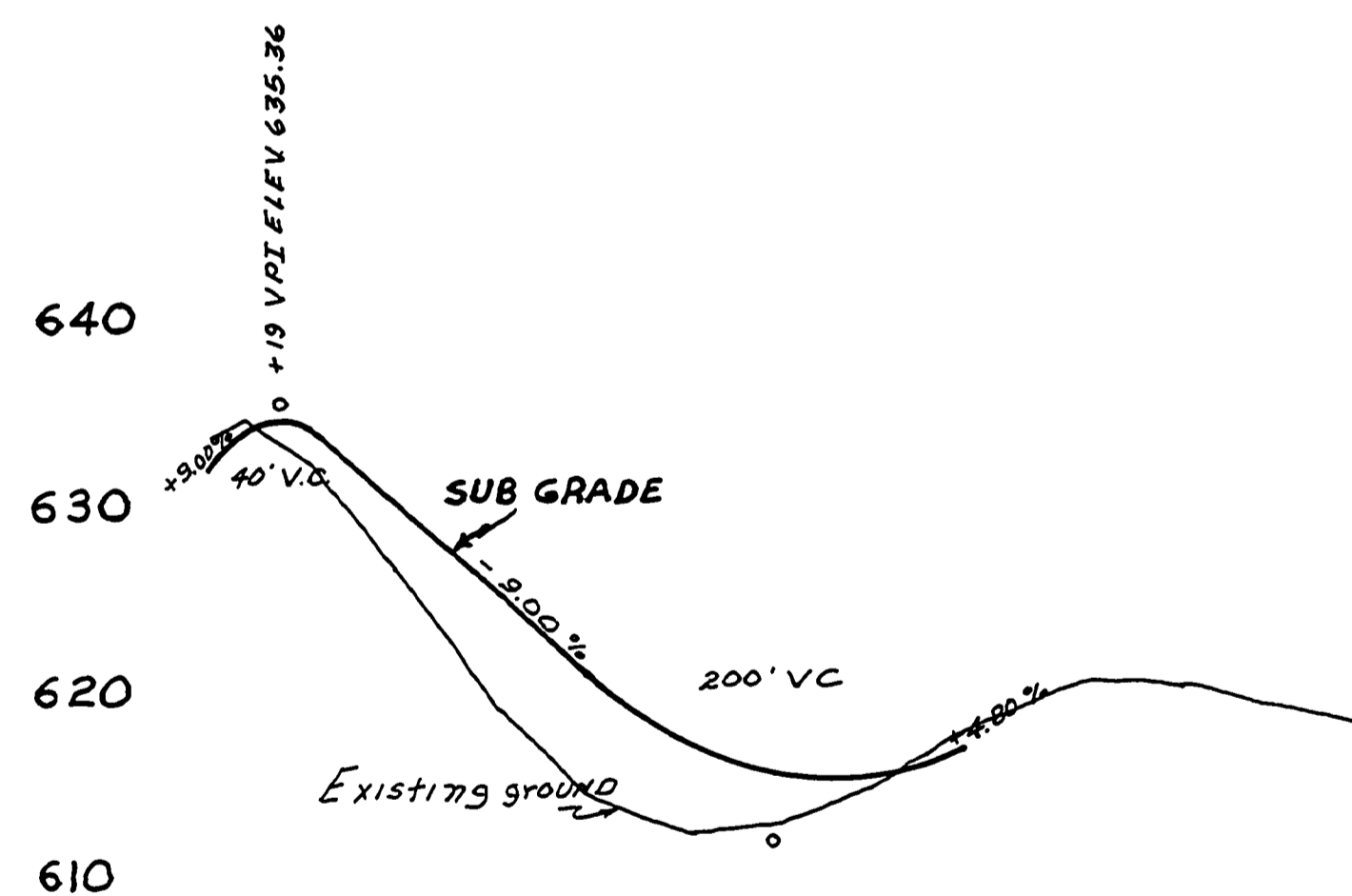
TYPICAL SECTION
WOODRUFF ROAD CONNECTION

INDEX OF DRAWINGS

SHEET NUMBER	DESCRIPTION
1	ROAD PLANS TYPICAL SECTION QUANTITY SUMMARY VICINITY MAP
9	STANDARD DRAWINGS
9	SHEET 9
2	TOTAL 2 SHEETS

QUANTITY SUMMARY

ITEM	UNIT	QUANTITY	ALLOWANCE	TOTAL
1. CLEARING & GRUBBING	LUMP SUM	ALL	—	ALL
2. GENERAL EXC. (UNCLASS)	CU. YD.	40	5	45
3. BORROW EXC. (UNCLASS)	CU. YD.	2500	250	2750
4. TRENCH EXC. (UNCLASS)	CU. YD.	40	5	45
5. WATERING	M GAL	17	3	20
6. FINISHING ROADBED & SLOPES	LUMP SUM	ALL	—	ALL
7. COARSE CRUSHED AGGREGATE IN BASE	CU. YD.	330	40	430
8. 3/4" O AGGREGATE IN BASE	CU. YD.	12.5	1.5	140
9. ASPHALTIC CONCRETE	TON	10.5	10	112
10. ASPHALT IN PRIME COAT	TON	2.3	0.7	3
11. 3/4" O IN PRIME COAT	CU. YD.	3	1	10
12. 18" C.M.P.	LIN. FT.	3	1	10
13. 108' C.M.P.	LIN. FT.	60	5	65
14. ROLLER HOURS	HR	17	3	20



L.L.
NOT AS BUILT NOT AS CONSTRUCTED
DOUGLAS COUNTY ROAD DEPT.
WOODRUFF ROAD CONN.#106
1973
GEORGE E. GRUBB COUNTY ENG