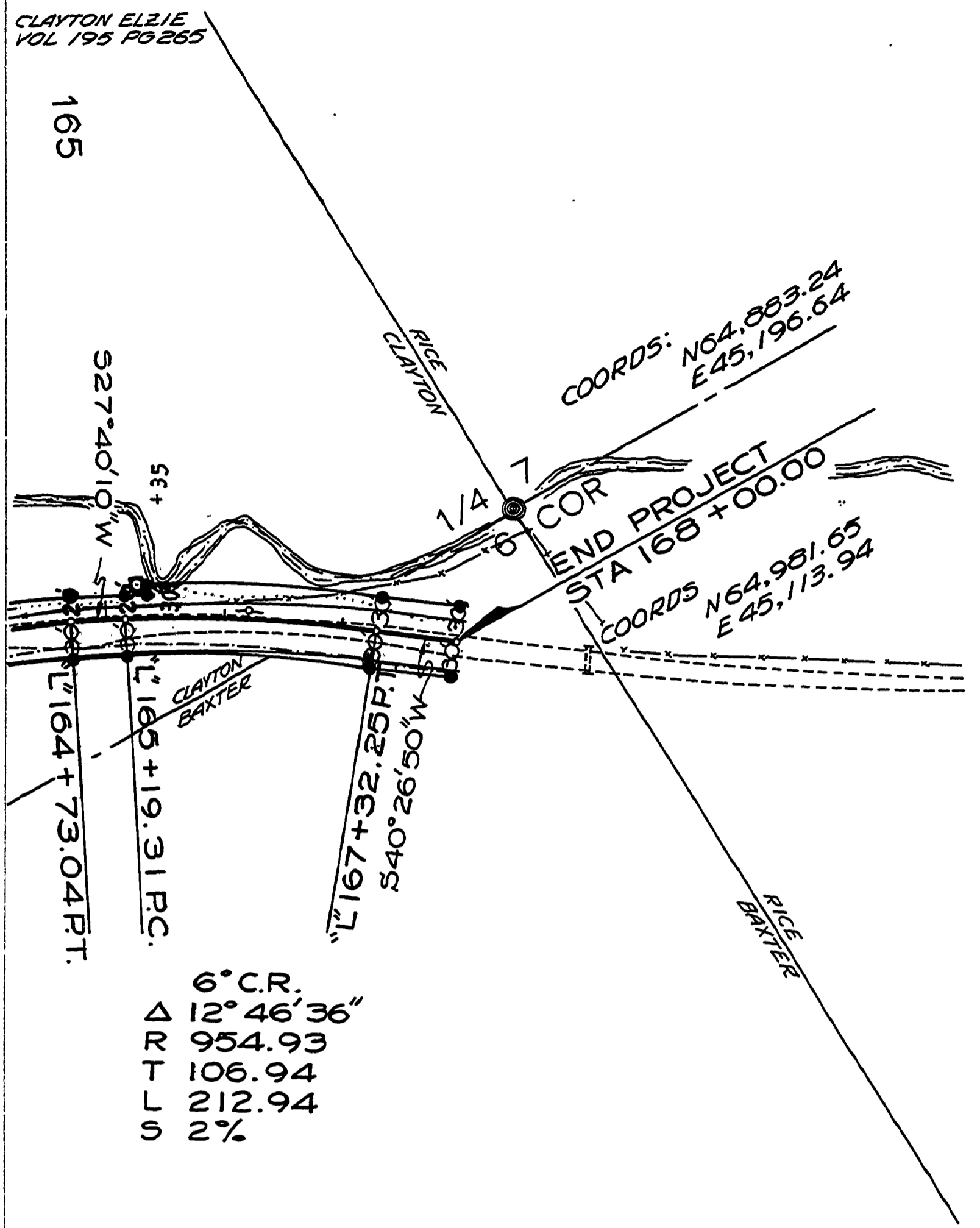
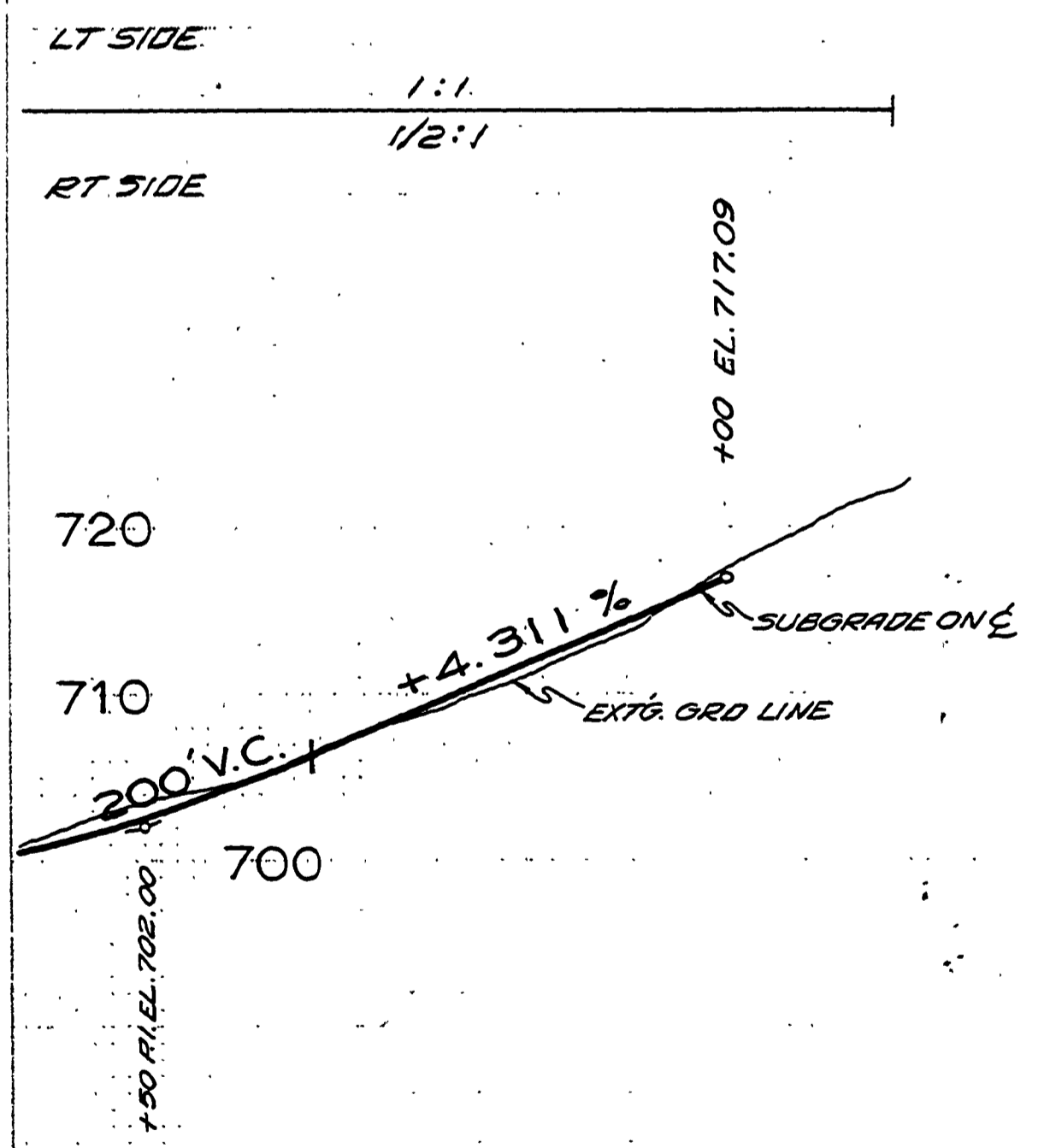


FILED
RECEIVED
JUL 15 1975
COUNTY SURVEYOR
DOUGLAS COUNTY, ORE

PLAN	SURVEYED	DATE
NOTE BOOK	NO. OF PAGES	
NO.		



J.H. BAKER & CO.
VOL 283 PG. 407



PROFILE	SURVEYED	DATE
NOTE BOOK	NO. OF PAGES	
NO.		

NOT REVISED
AS CONSTRUCTED

DOUGLAS COUNTY ROAD DEPT.
KENT CREEK RD #100
1972 SHT 9
GEORGE E GRUBB COUNTY ENGR.

02190225