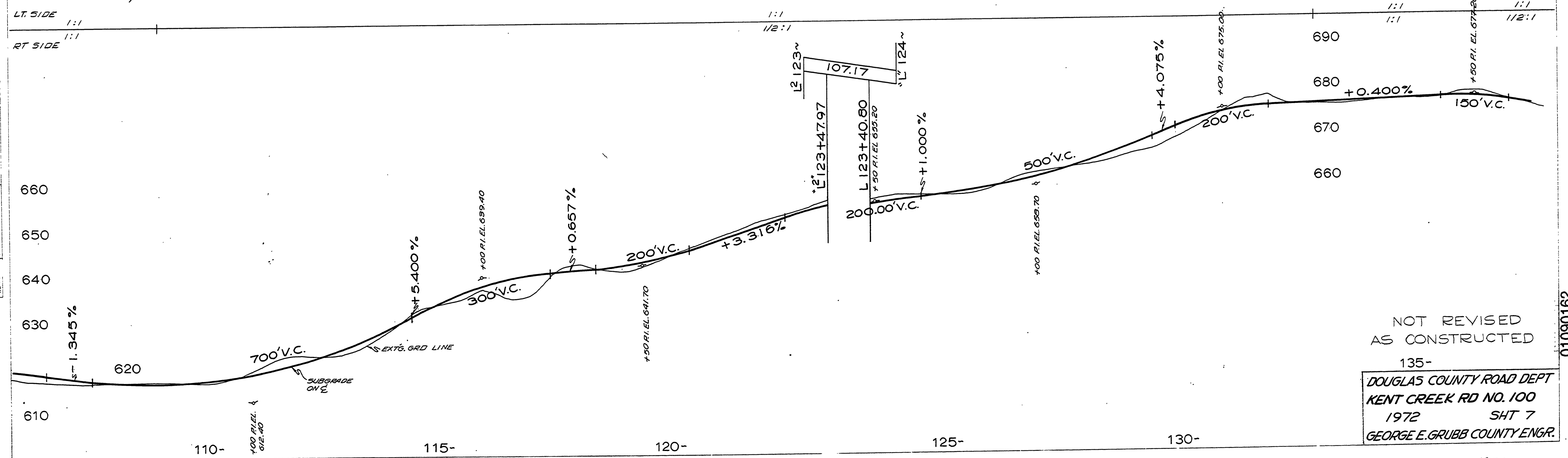
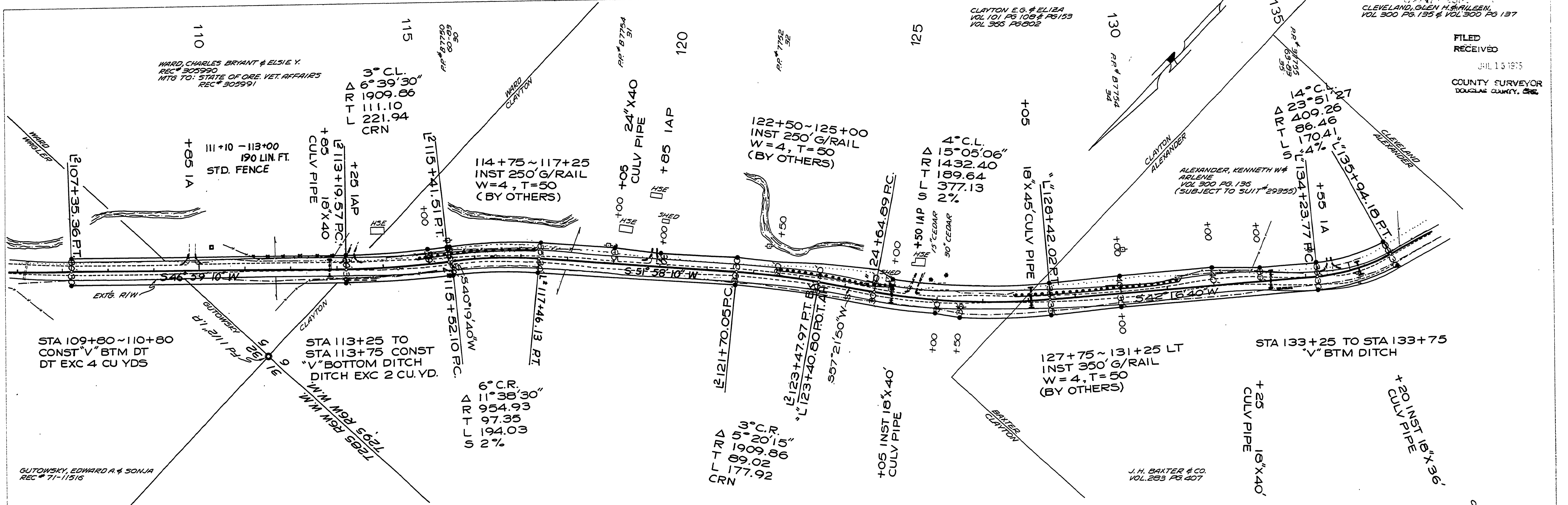


SEC 5,6 & 32 T28S & T29S R6W W.M.

RD 100

CLAYTON E.G. & ELIZA
VOL 101 PG 103 & PG 153
VOL 355 PG 302

FILED
RECEIVED
JUL 15 1972
COUNTY SURVEYOR
DOUGLAS COUNTY, ORE.



PLAN

DATE	
BY	
SURVEYED	
PLOTTED	
ENGINEER	
NOTE BOOK	
NO. OF WAYS CHECKED	
NO.	

PROFILE

DATE	
BY	
PROFILES	
GRADES CHECKED	
NOTE BOOK	
NO. OF WAYS CHECKED	
NO.	

NOT REVISED
AS CONSTRUCTED
135-
DOUGLAS COUNTY ROAD DEPT
KENT CREEK RD NO. 100
1972 SH 7
GEORGE E. GRUBB COUNTY ENGR.

01090162