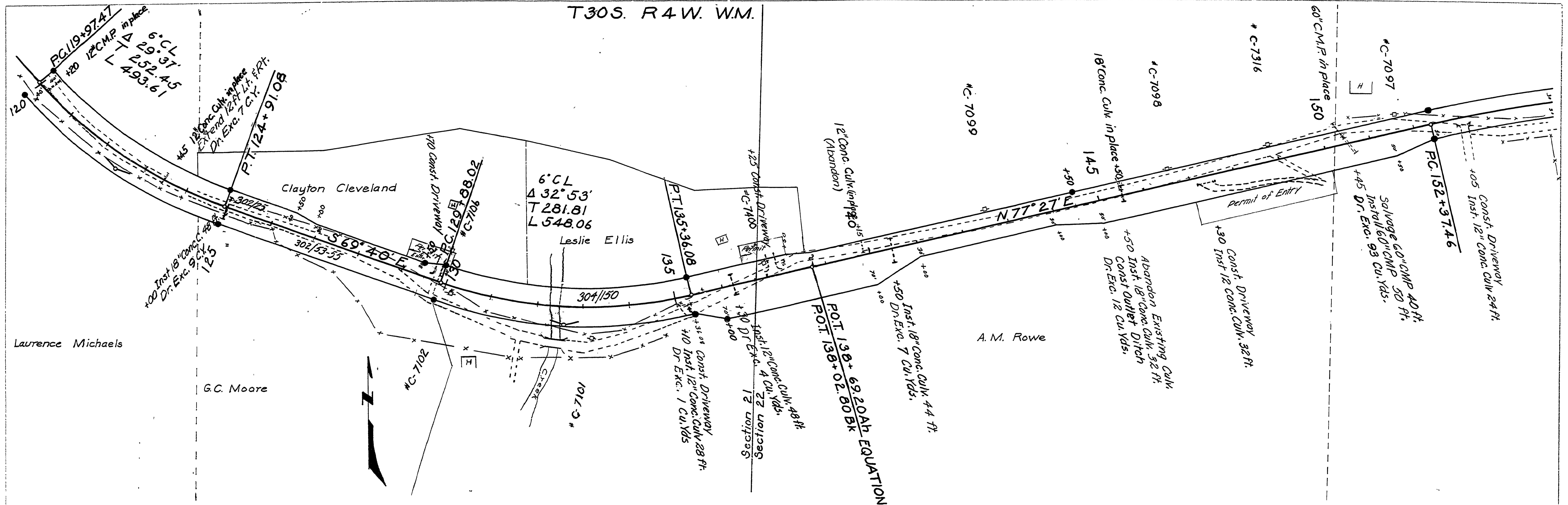
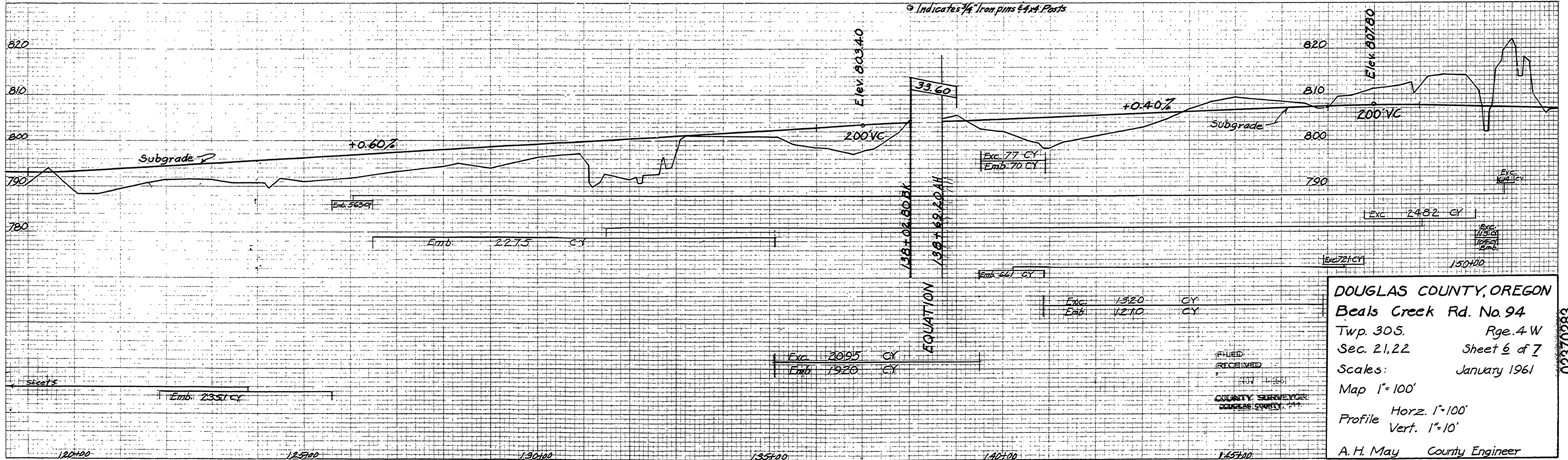


DATE	
BY	
REVISIONS	
NO.	
DATE	
BY	
REVISIONS	
NO.	
DATE	
BY	
REVISIONS	
NO.	



DATE	
BY	
REVISIONS	
NO.	
DATE	
BY	
REVISIONS	
NO.	
DATE	
BY	
REVISIONS	
NO.	



DOUGLAS COUNTY, OREGON  
 Beals Creek Rd. No. 94  
 Twp. 30S. Rge. 4 W  
 Sec. 21, 22 Sheet 6 of 7  
 Scales: January 1961  
 Map 1"=100'  
 Profile Horz. 1"=100'  
 Vert. 1"=10'  
 A. H. May County Engineer

PLATE 4 CROSS SECTION B. P. R. & R. E. STANDARD  
 EUGENE DISTRICT CO. CHICAGO, NEW YORK

M.P. 2.37-2.33

Jan '61  
 Co. Rd #94 sht. 6 of 7

02370283