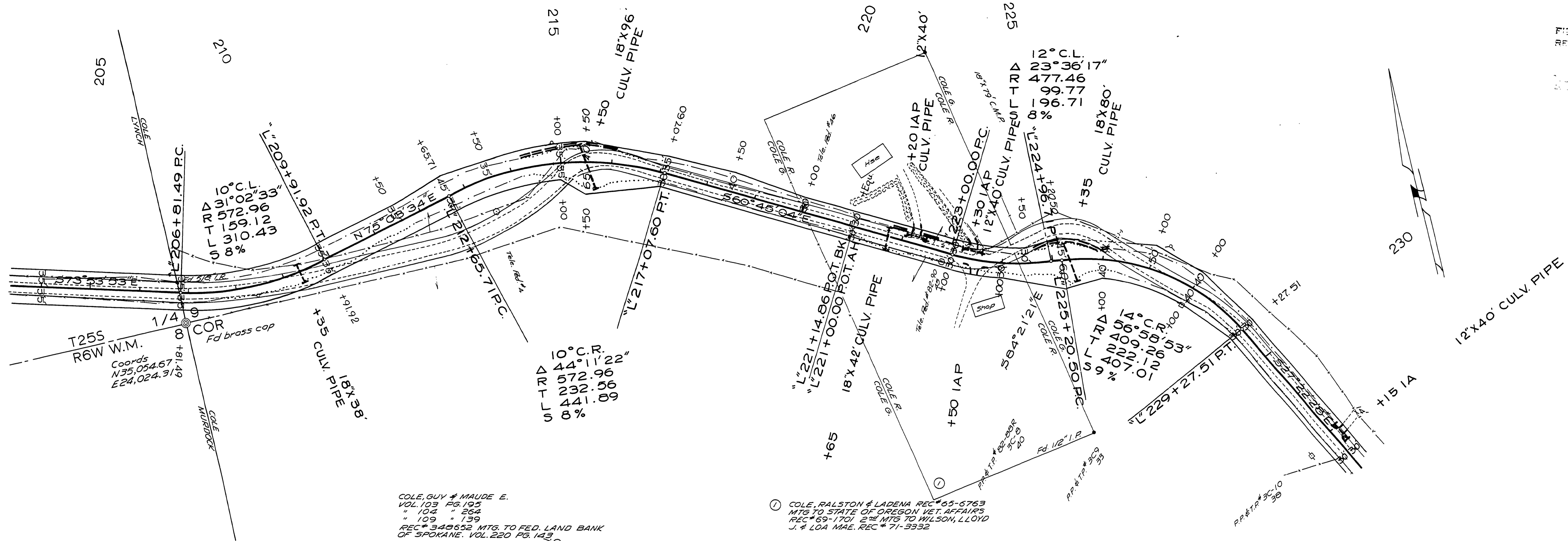


SEC 8,9 T25S R6W W.M.

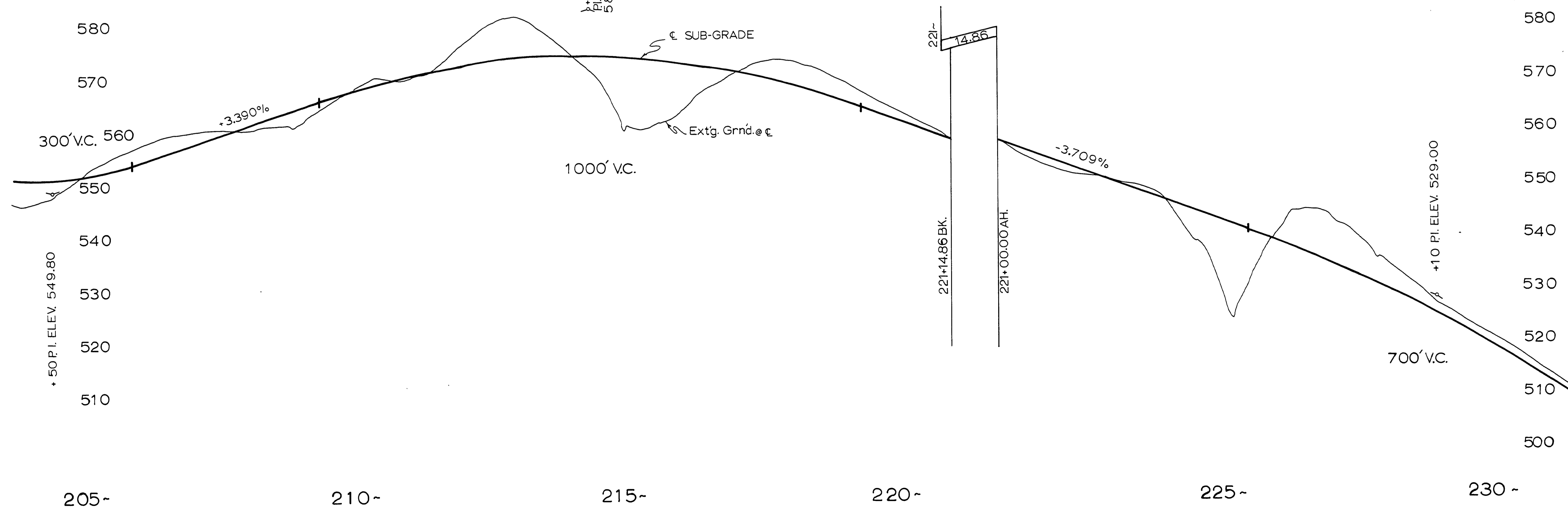
RD 91

FILES  
RECORDED



COLE, GUY & MAUDE E.  
VOL. 103 PG. 195  
" 104 " 264  
" 109 " 139  
REC # 340652 MTG. TO FED. LAND BANK  
OF SPOKANE. VOL. 220 PG. 143  
P.I. ELEV. 583.70

① COLE, RALSTON & LADENA REC # 65-6763  
MTG TO STATE OF OREGON VET. AFFAIRS  
REC # 69-1701 2<sup>ND</sup> MTG TO WILSON, LLOYD  
J. & LOA MAE. REC # 71-3332



NOT REVISED  
AS CONSTRUCTED

DOUGLAS COUNTY ROAD DEPT  
COLE ROAD NO. 91  
1972 SHT 6  
GEORGE E. GRUBB COUNTY ENGR.

02900242

1972  
C. R. # 91 24.8 (82)

M.P. 2.90 - 3.48

