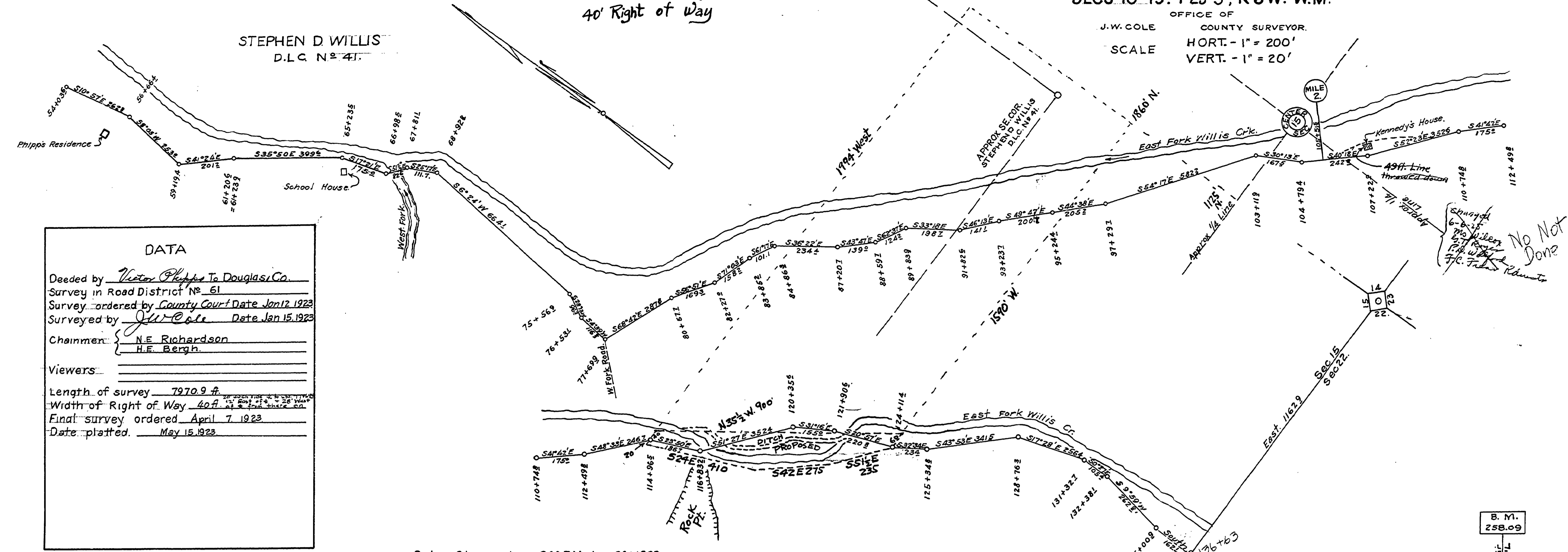


MAP AND PROFILE  
OF  
**WILLIS CREEK RD.**  
EAST FORK

Victor Phipps to Douglas County  
Sta 55+30 to 135+00.9 Consid \$506.40  
Road Rec. 8-Pg. 409  
40' Right of Way

LYING IN  
SECS. 10-15. T29 S, R6 W. W.M.

OFFICE OF  
J.W. COLE COUNTY SURVEYOR.  
SCALE HORT. - 1" = 200'  
VERT. - 1" = 20'



**DATA**

Decided by Victor Phipps To Douglas Co.  
Survey in Road District No. 61  
Survey ordered by County Court Date Jan 12 1923  
Surveyed by J.W. Cole Date Jan 15 1923

Chainmen: N.E. Richardson  
H.E. Bergh.

Viewers: \_\_\_\_\_

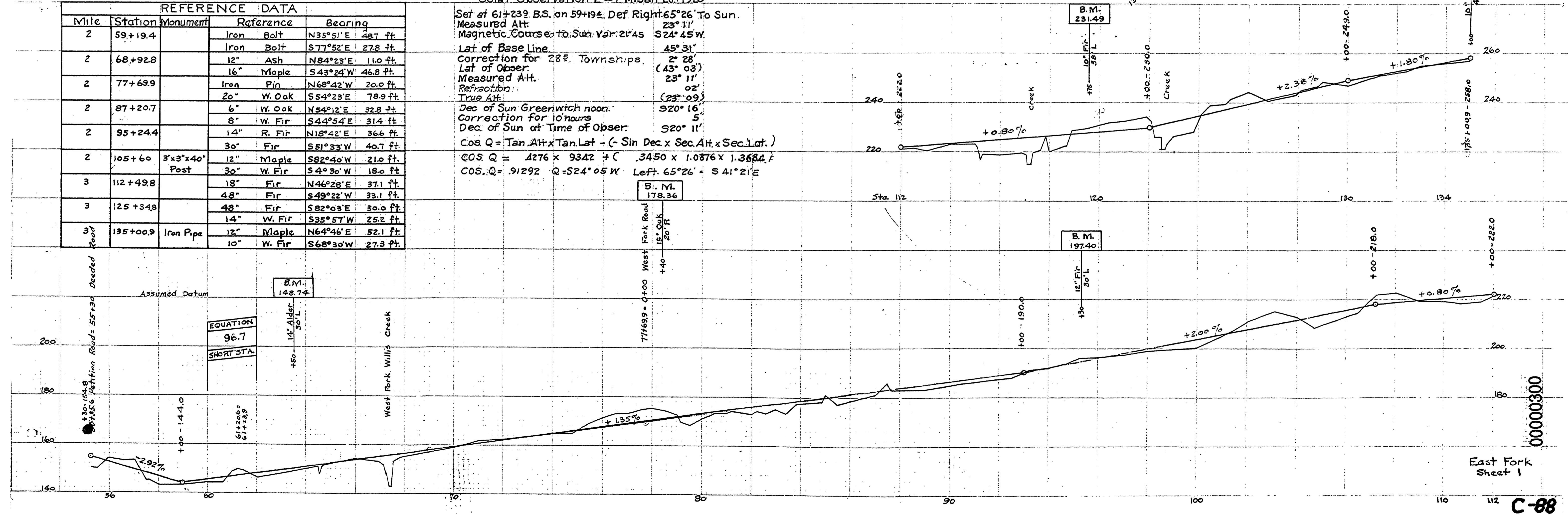
Length of survey 7970.9 ft  
Width of Right of Way 40 ft  
Final survey ordered April 7 1923  
Date plotted May 15 1923

Solar Observation 2:00 PM, Jan 20, 1923

Set at 61+23.9 B.S. on 59+19.4 Def Right 65°26' To Sun.  
Measured Alt. 23° 11'  
Magnetic Course to Sun. Var. 21'45" S24°45' W.  
Lat of Base Line 45° 31'  
Correction for 28 E. Townships. 2' 28"  
Lat of Obser. (43° 03')  
Measured Alt. 23° 11'  
Refraction 02'  
True Alt. (23° 09')  
Dec of Sun Greenwich noon 520° 16'  
Correction for 10 hours 5'  
Dec of Sun at Time of Obser. 520° 11'

$\cos Q = \tan Alt \times \tan Lat - (- \sin Dec \times \sec Alt \times \sec Lat.)$   
 $\cos Q = 4276 \times 9342 + (- 3450 \times 1.0876 \times 1.3684)$   
 $\cos Q = .91292 \quad Q = 524° 05' W \quad \text{Left } 65° 26' = S 41° 21' E$

Mile	Station	Monument	Reference	Bearing
2	59+19.4		Iron Bolt	N35°51'E 48.7 ft.
			Iron Bolt	S77°52'E 27.8 ft.
2	68+92.8		12" Ash	N84°23'E 11.0 ft.
			16" Maple	S43°24'W 46.8 ft.
2	77+69.9		Iron Pin	N68°42'W 20.0 ft.
			20" W. Oak	S54°23'E 78.9 ft.
2	87+20.7		6" W. Oak	N54°12'E 32.8 ft.
			8" W. Fir	S44°54'E 31.4 ft.
			14" R. Fir	N18°42'E 36.6 ft.
2	95+24.4		30" Fir	S51°33'W 40.7 ft.
			12" Maple	S82°40'W 21.0 ft.
2	105+60	3"x3"x40" Post	30" W. Fir	S40°30'W 18.0 ft.
			18" Fir	N46°28'E 37.1 ft.
3	112+49.8		4.8" Fir	S49°22'W 33.1 ft.
			4.8" Fir	S82°03'E 30.0 ft.
3	125+34.8		14" W. Fir	S35°57'W 25.2 ft.
			12" Maple	N64°46'E 52.1 ft.
3	135+00.9	Iron Pipe	10" W. Fir	S68°30'W 27.3 ft.



East Fork Sheet 1

C-88

M.P. 3.00

T 29-6 S 10 E 15 NO DATE