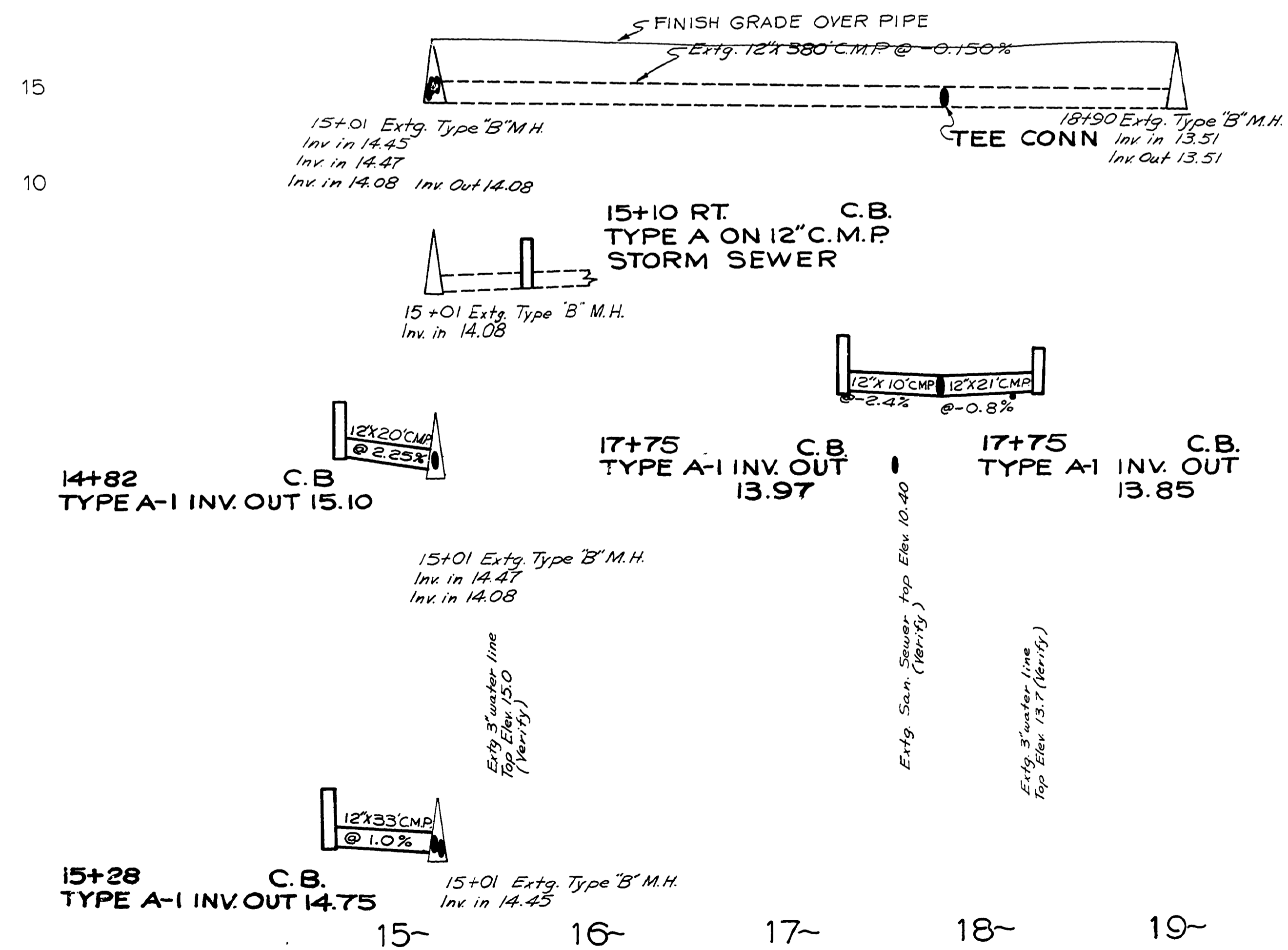
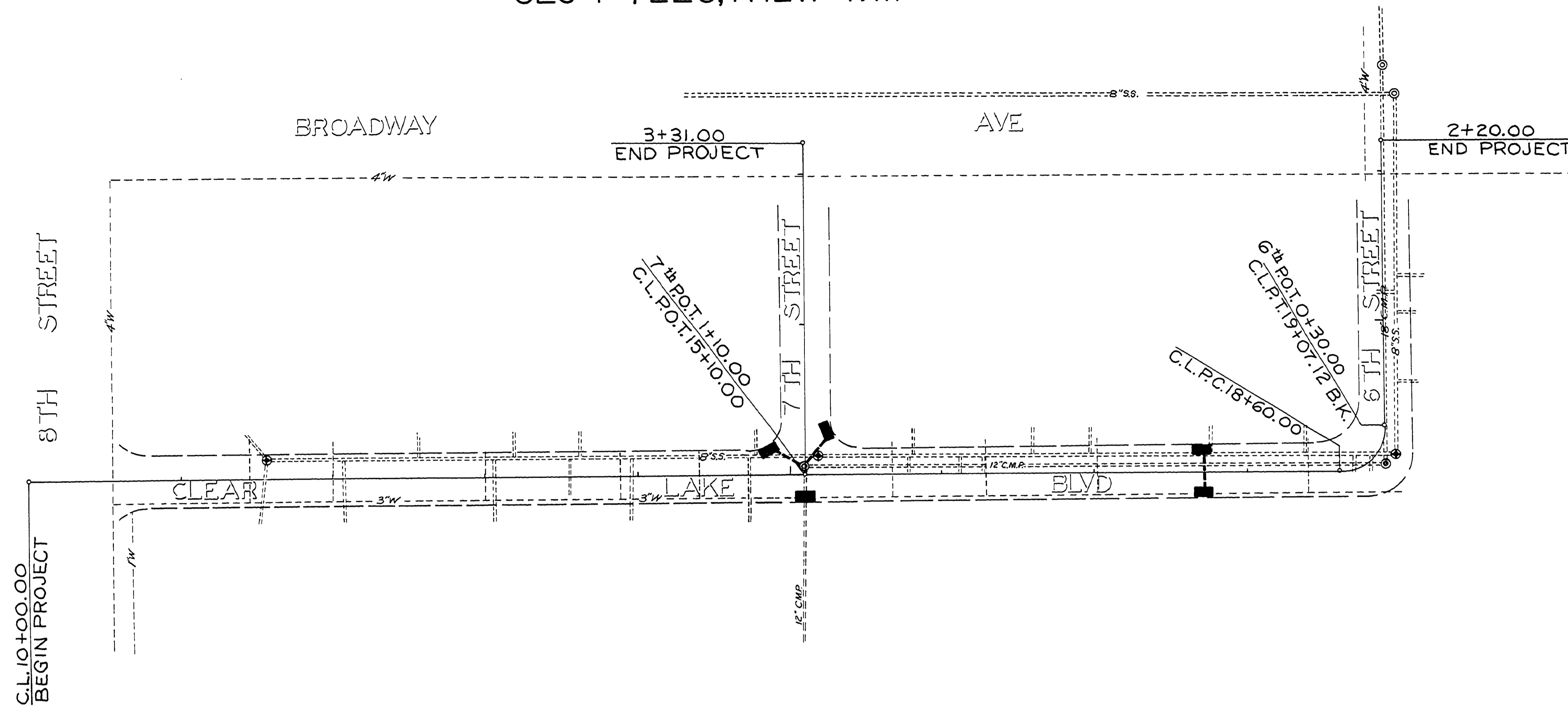
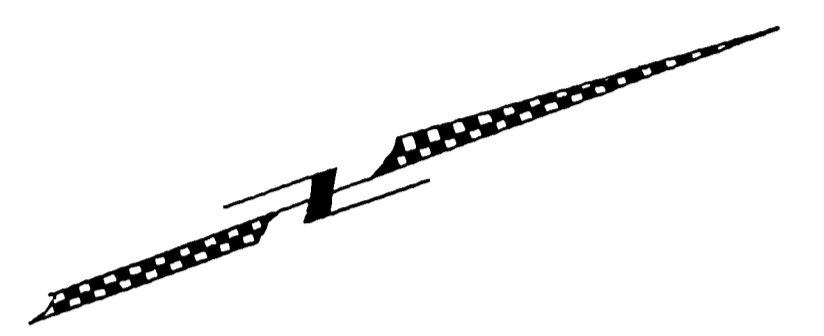


SEC 7 T22S,R12W WM



FILED
 APR 11 1974
 COUNTY ENGINEER



0018CULV

NOT REVISED
 AS CONSTRUCTED

DOUGLAS COUNTY ROAD DEPT.
 WINCHESTER BAY STREETS
 RD. NO. 87A

1974 SHT. 3
 GEORGE E. GRUBB COUNTY ENG'R

C. Rd. #87A 1974
 Sht. 3 (63)

