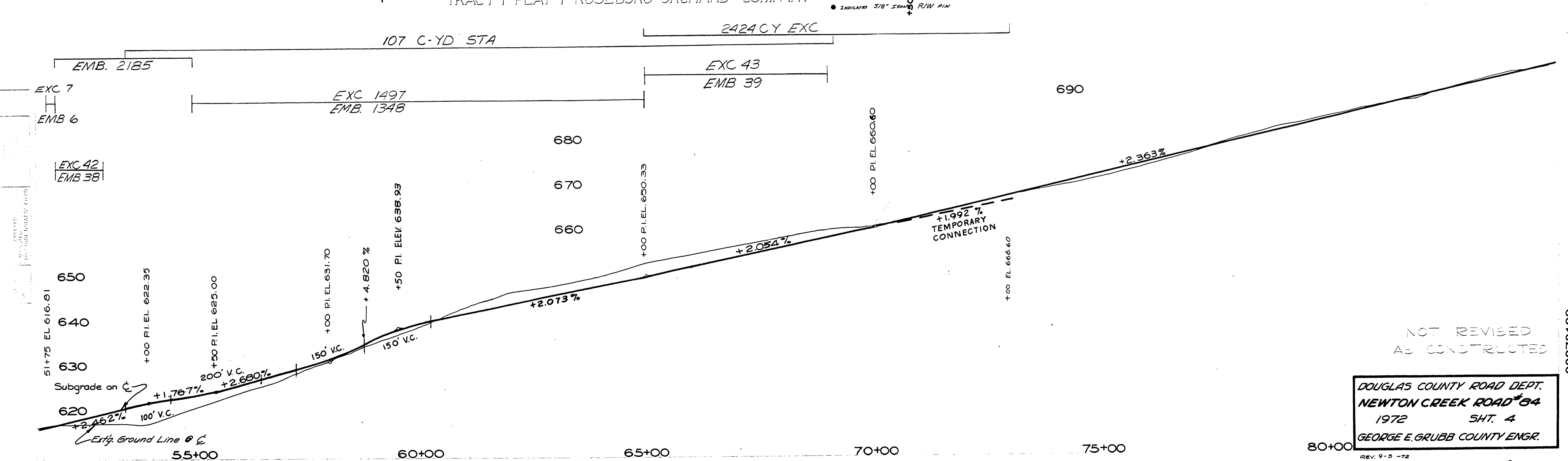
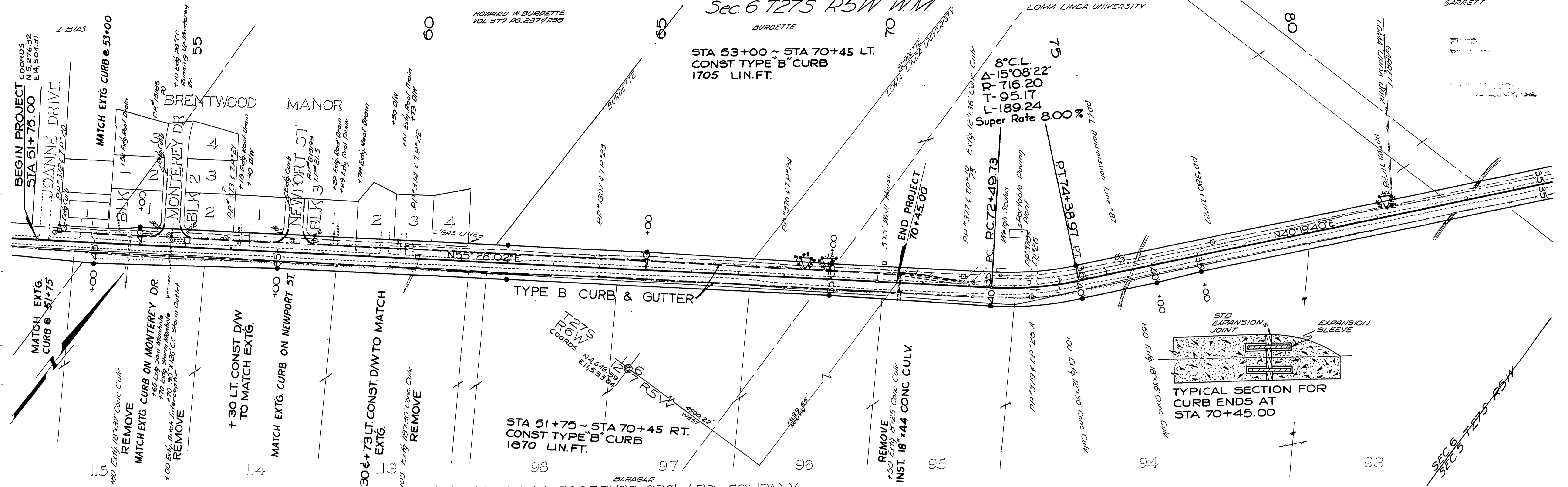


M.P.1

Sec. 6 T275 R5W W.M.
BURDETTE

STA 53+00 ~ STA 70+45 LT.
CONST TYPE 'B' CURB
1705 LIN. FT.



NOT REVISED
AS CONSTRUCTED

DOUGLAS COUNTY ROAD DEPT.
 NEWTON CREEK ROAD #84
 1972 SHT. 4
 GEORGE E. GRUBB COUNTY ENGR.

REV. 9-5-72

C. Ad. #84

1972

M.P. 0.87 - 1.22

00870122

