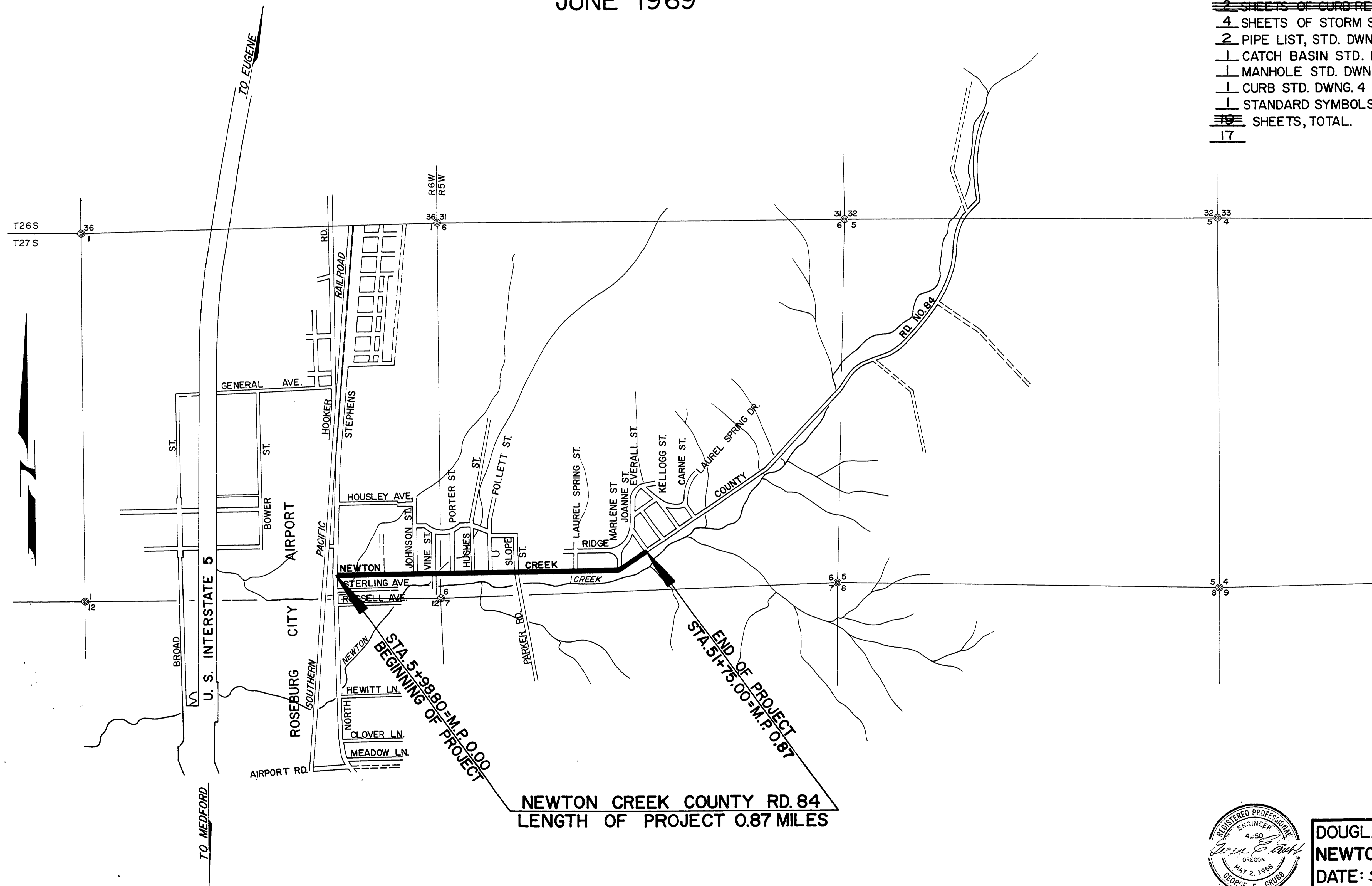


DOUGLAS COUNTY, OREGON
 PLANS FOR PROPOSED PROJECT
 GRADING, PAVING, & STORM SEWER
NEWTON CREEK, COUNTY ROAD NO.84
 MILE POINT 0.00 TO MILE POINT 0.87

JUNE 1969

- THIS SET OF PLANS CONSISTS OF THE FOLLOWING
- 7 SHEETS OF ROAD PLANS
 - ~~2~~ SHEETS OF CURB RETURN PROFILES
 - 4 SHEETS OF STORM SEWER PLANS
 - 2 PIPE LIST, STD. DWNG. 1
 - 1 CATCH BASIN STD. DWNG. 2
 - 1 MANHOLE STD. DWNG. 3
 - 1 CURB STD. DWNG. 4
 - 1 STANDARD SYMBOLS STD. DWNG. 9
 - ~~10~~ SHEETS, TOTAL.
 - 17



VICINITY MAP



DOUGLAS COUNTY ROAD DEPT.
NEWTON CREEK, CO. RD.#84
 DATE: SEPT. 1969 SHEET 1 OF 7.
 George E. Grubb County Engineer

0000008C