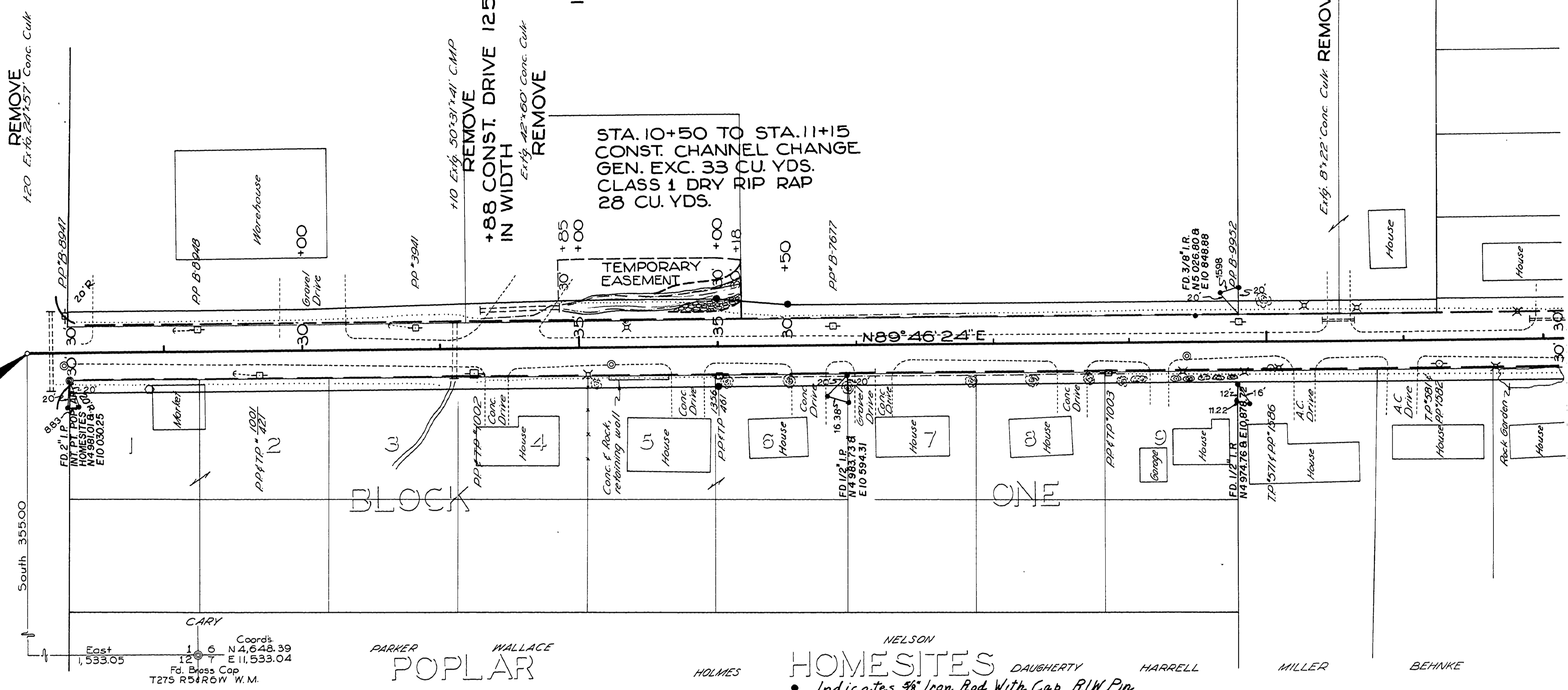


40 DRIVEWAYS ± TO BE CONSTD. LT. SIDE
 40 DRIVEWAYS ± TO BE CONSTD. RT. SIDE
 DRIVEWAY WIDTHS & LENGTHS TO BE CONSTD.
 AS DIRECTED BY ENGINEER.

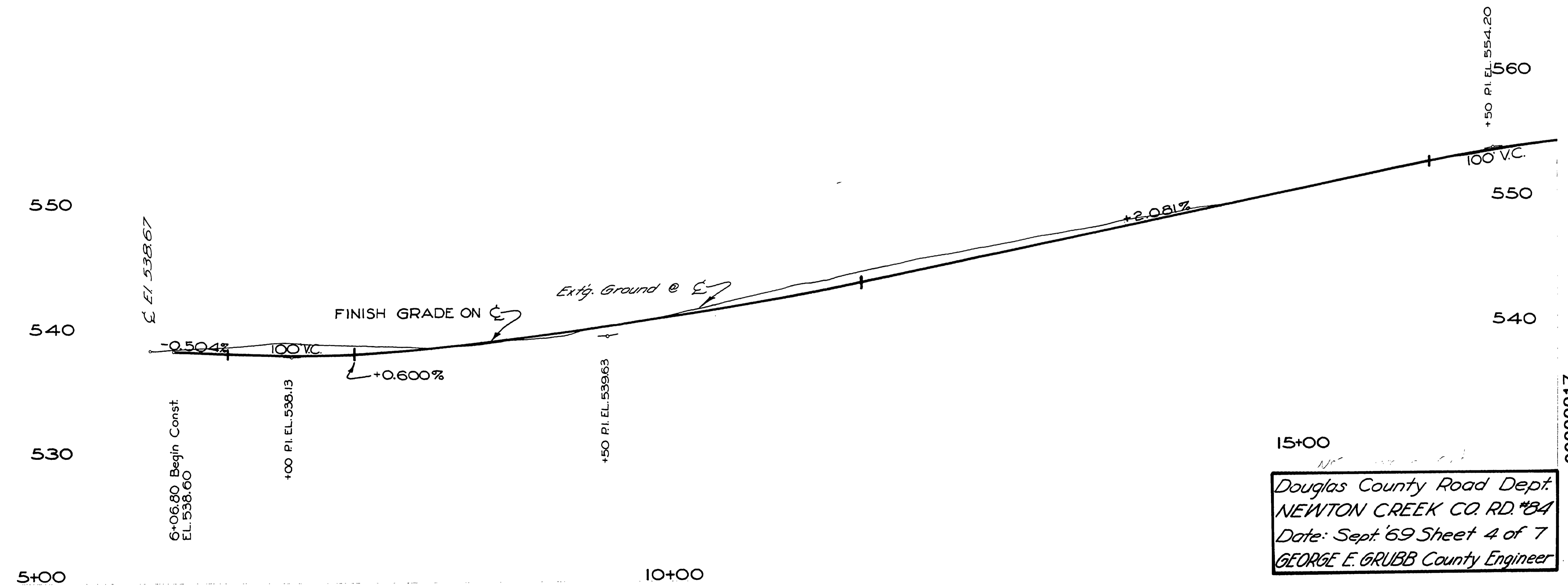
Sec.1 T275 R6W W.M. SPEAR INDUSTRIES

STA 5+98.80
 BEGIN PROJECT



CARY
 East 1,533.05
 North 6,644.39
 E.I. 533.04
 Fd. Brass Cop
 T275 R6W W.M.

HOMESITES
 • Indicates 3/8" Iron Rod With Cap R/W Pin



Douglas County Road Dept.
 NEWTON CREEK CO. RD. #84
 Date: Sept. '69 Sheet 4 of 7
 GEORGE E. GRUBB County Engineer