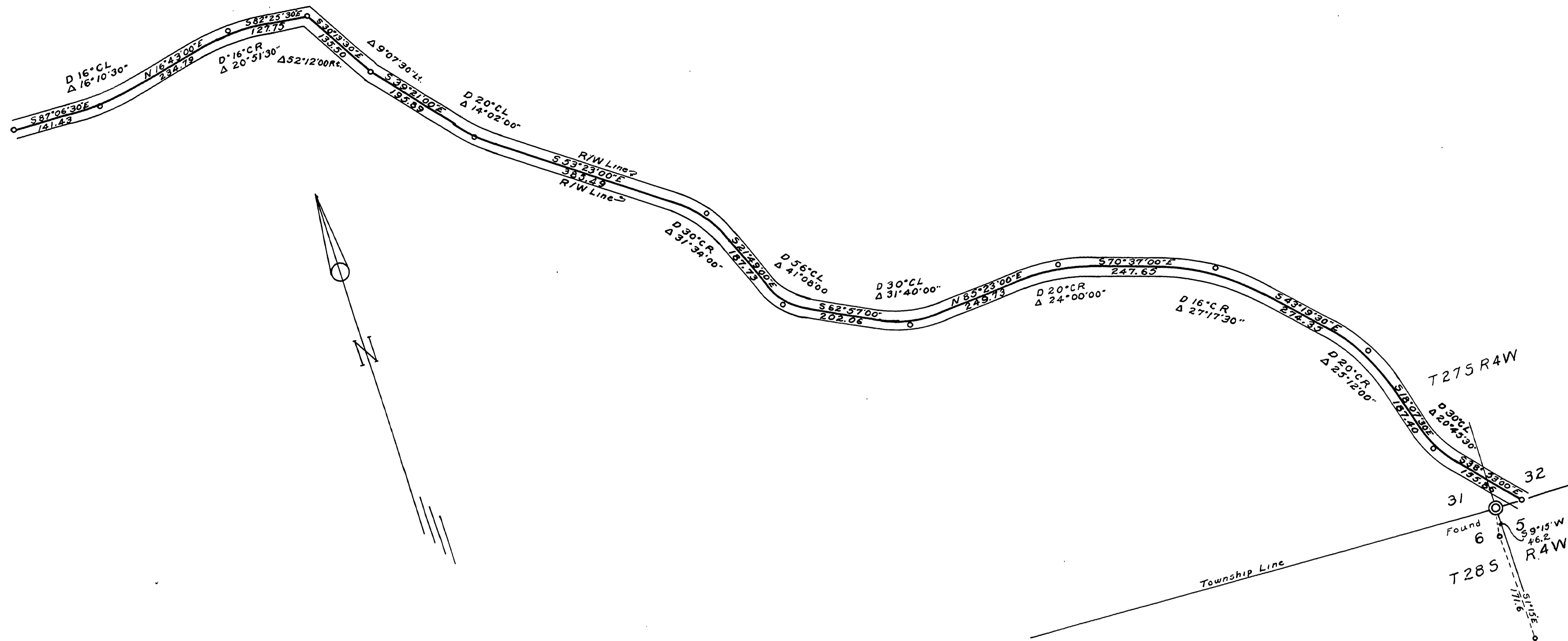


DOUGLAS COUNTY, OREGON

ROAD NO. 83

TWP. 27, 28 S. Date 1954  
RNG. 4 W. Sheet No. 4  
SEC. 31, 32, 5, 6 of 6 Sheets  
Scale Map: 1" = 100'

WALLY M. HECTOR COUNTY ENG.



Note:  
End of Traverse and Traveled  
Road as of Nov. 1951  
--- Continuation of Road as Plotted  
from RR Vol. 2 pg. 205 Field Notes

M.P. 1.98-2.40

1954  
Sh. 4 of 6  
RD. No. 83  
(37)

01980240

FILED  
RECEIVED  
JUN 1 1954  
COUNTY CLERK  
DOUGLAS COUNTY, OREGON