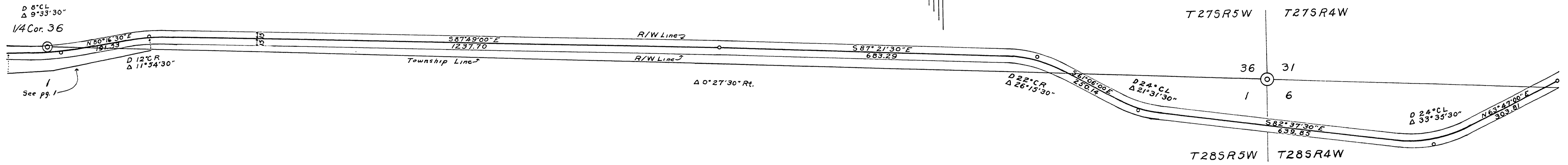


DOUGLAS COUNTY, OREGON

ROAD NO. 83

TWP. 27, 28S. Date 1954
RNG. 4, 5W. Sheet No. 2
SEC. 31, 36, 1, 6 of 6 Sheets
Scale Map: 1" = 100'

WALLY M. HECTOR COUNTY ENG.



FILED
RECEIVED
JUN 1 1954
COUNTY SURVEYOR
DOUGLAS COUNTY, ORE.

00720135

M.P. 0.72-1.35

1954
Sht. 2 of 6 Rd. # 83 (35)

