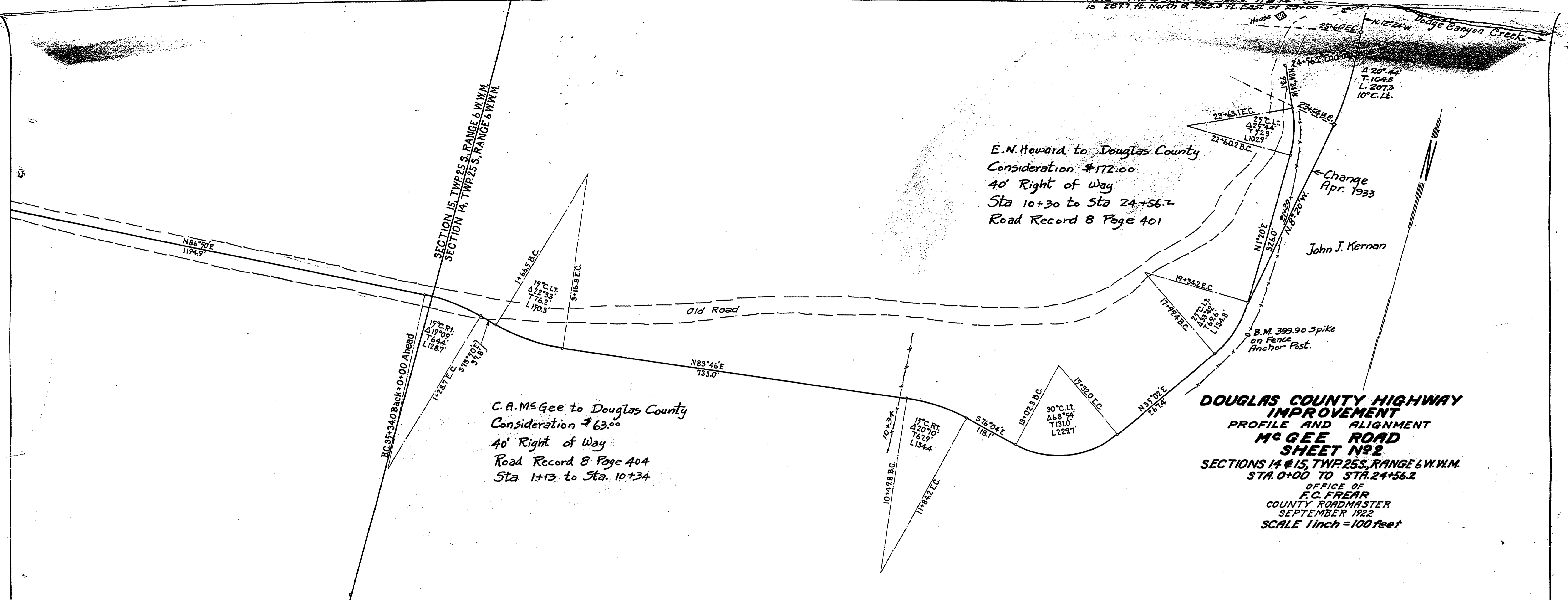
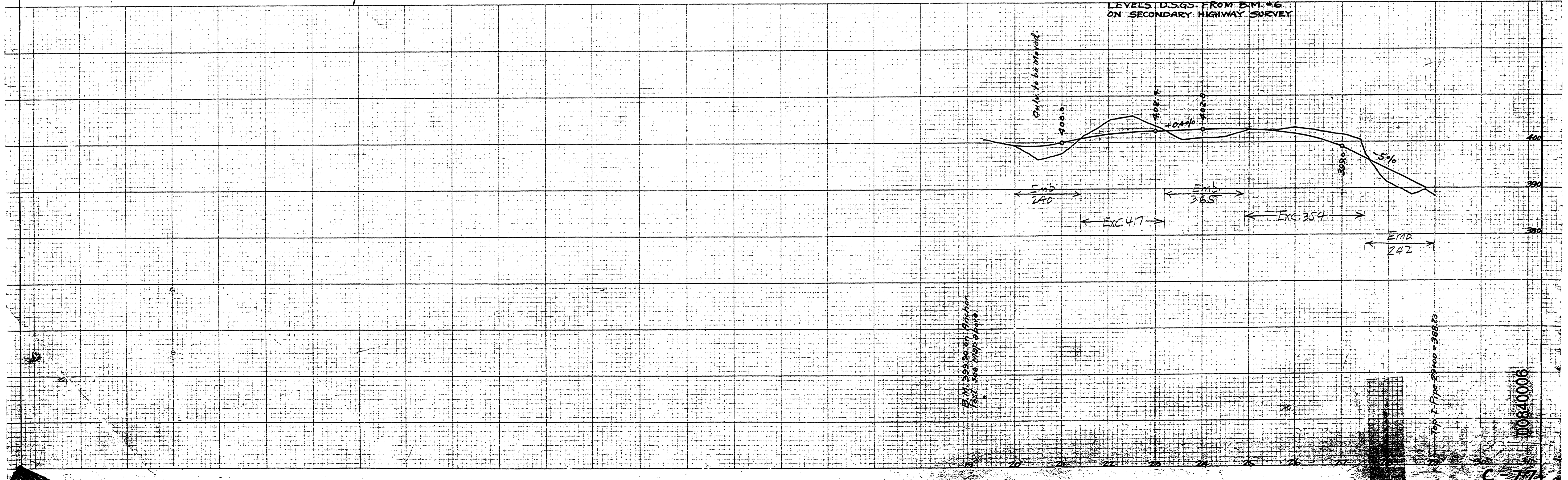


Note: The N. 28° E. 525.3 ft. East of 23+00 is 287.1 ft. North & 325.3 ft. East of 23+00



DOUGLAS COUNTY HIGHWAY IMPROVEMENT PROFILE AND ALIGNMENT MCGEE ROAD SHEET NO 2
 SECTIONS 14 & 15, TWP 25 S., RANGE 6 W. 1/4 W.M.
 STA. 0+00 TO STA. 24+56.2
 OFFICE OF F.C. FREAR
 COUNTY ROADMASTER
 SEPTEMBER 1922
 SCALE 1 inch = 100 feet



00840006