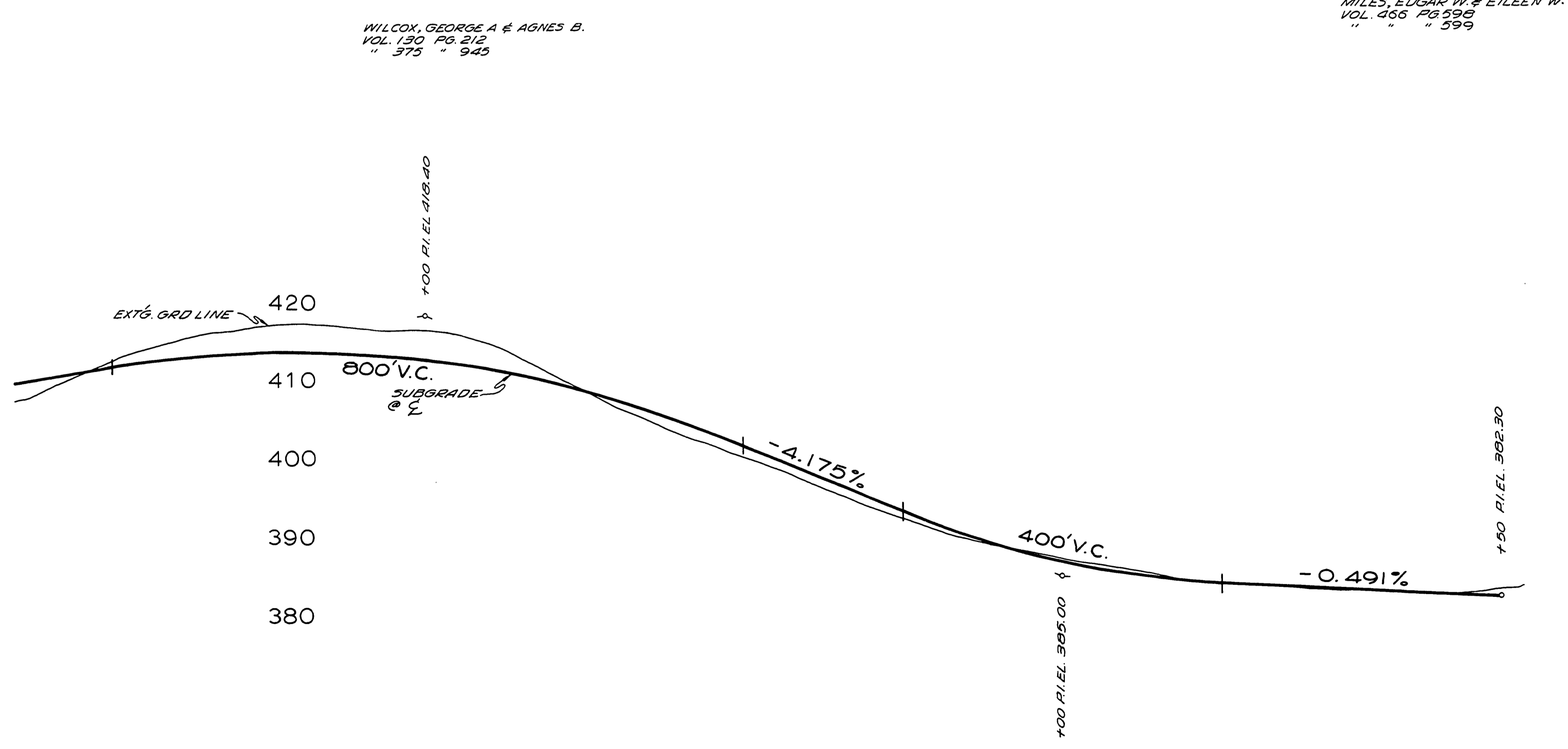
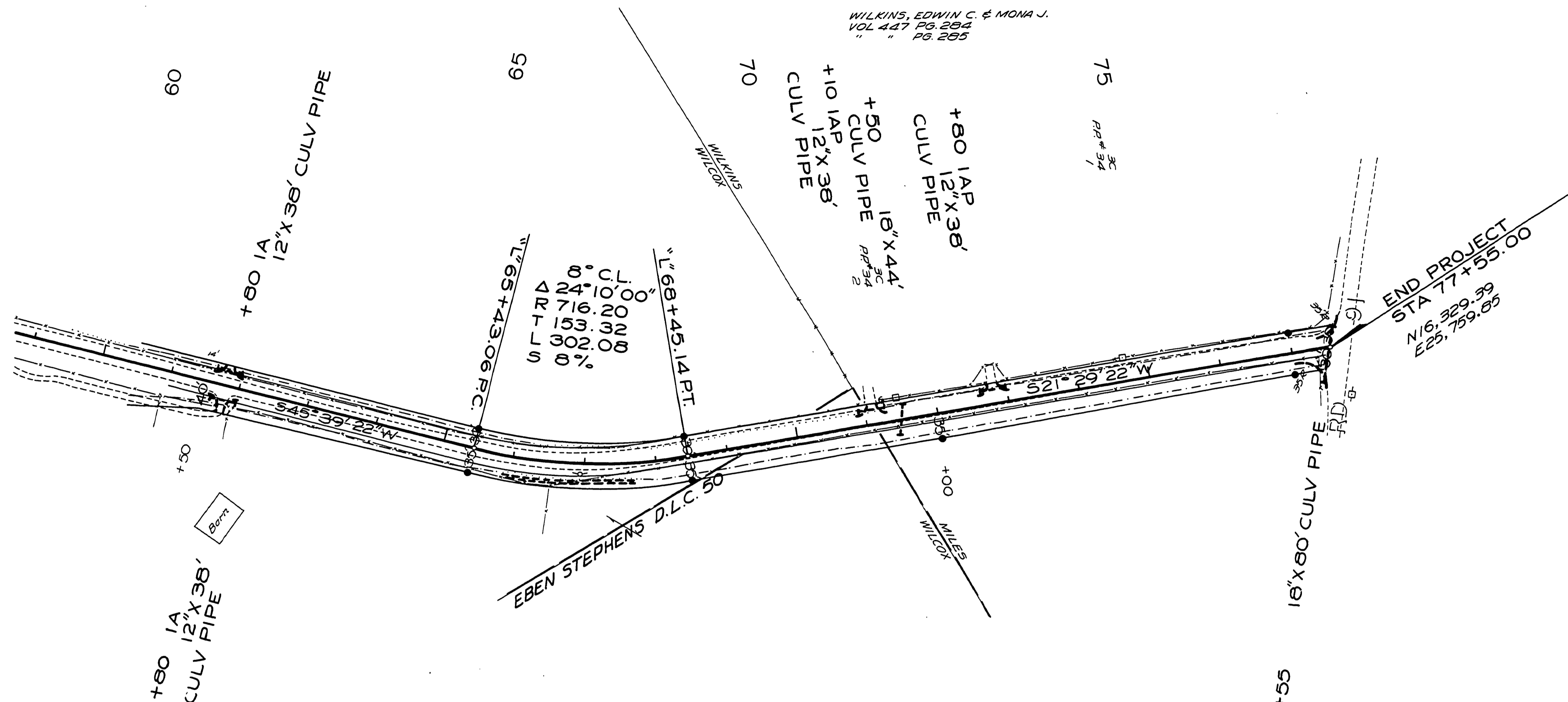


SEC 15 T25S R6W W.M.

RD 77

FILED
RECEIVED
COUNTY SURVEYOR
DOUGLAS COUNTY, ORE.



NOT REVISED
AS CONSTRUCTED
DOUGLAS COUNTY ROAD DEPT.
STEPHENS ROAD NO. 77
1972 SHT 3
GEORGE E. GRUBB COUNTY ENGR.

00990128

Co. Rd #77 1972
Sht. 3 (25)

M.P. 0.99-1.28

