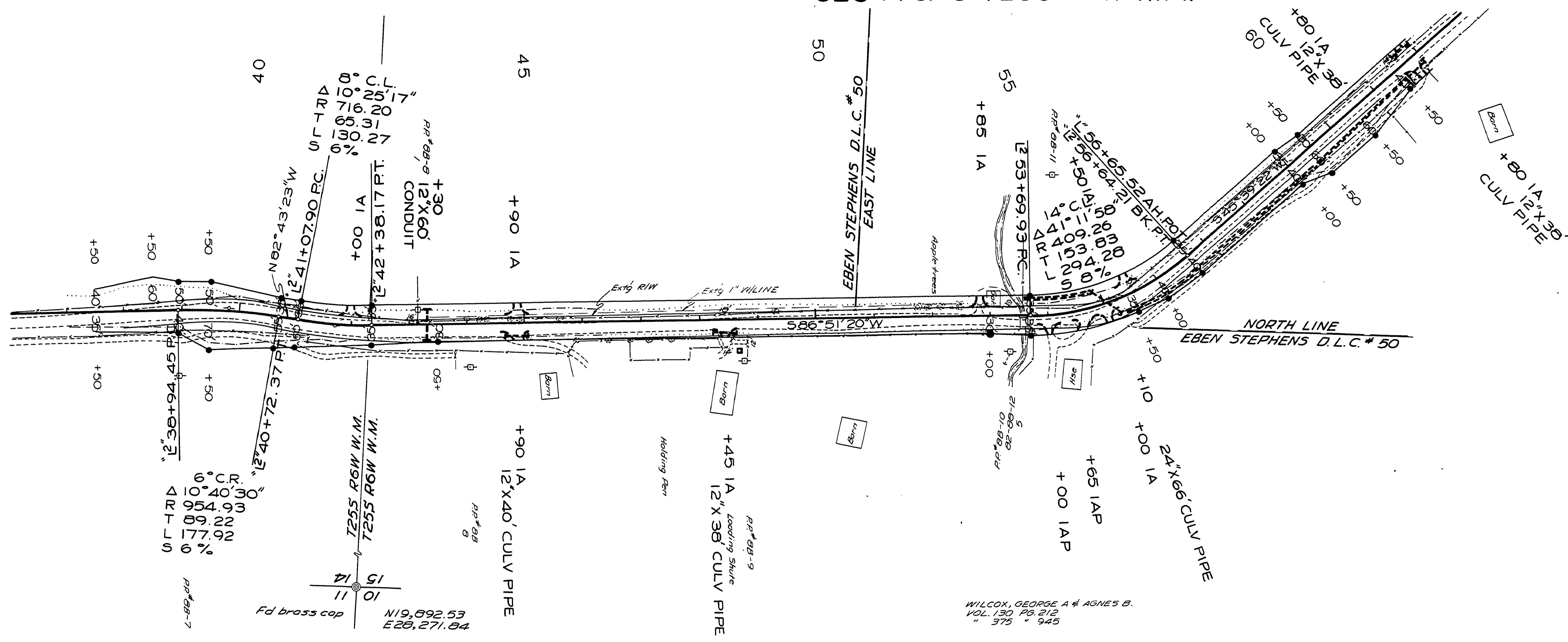
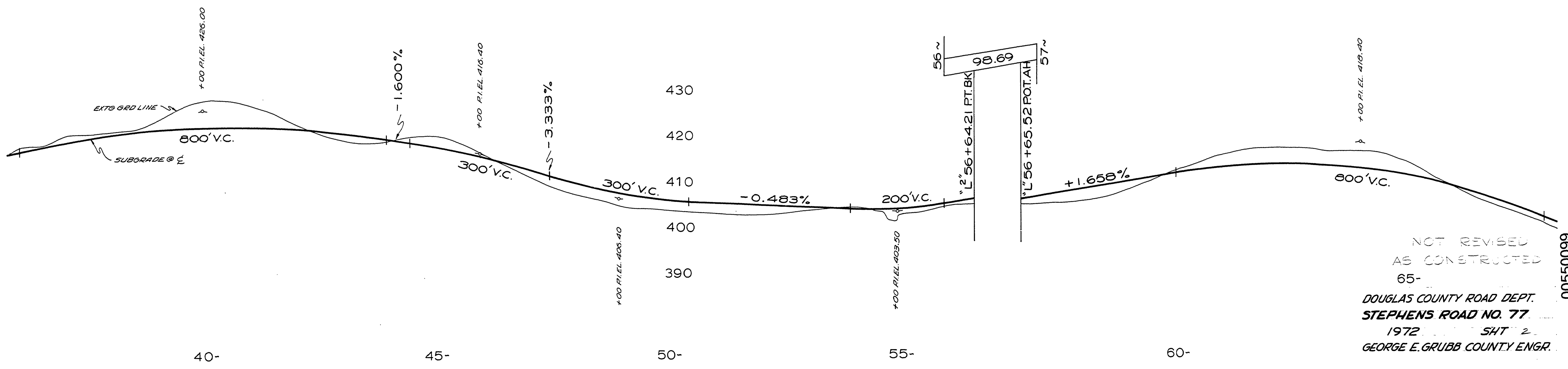


SEC 14 & 15 T25S R6W W.M.

RD 77



FILED
RECEIVED
COUNTY SUPERVISOR
DOUGLAS COUNTY, ORE.



NOT REVISED
AS CONSTRUCTED
65-
DOUGLAS COUNTY ROAD DEPT.
STEPHENS ROAD NO. 77
1972 SHT 2
GEORGE E. GRUBB COUNTY ENGR.

00550099

M.P. 0.55 - 0.99

1972
G.R. # 77 sht. 2 (24)