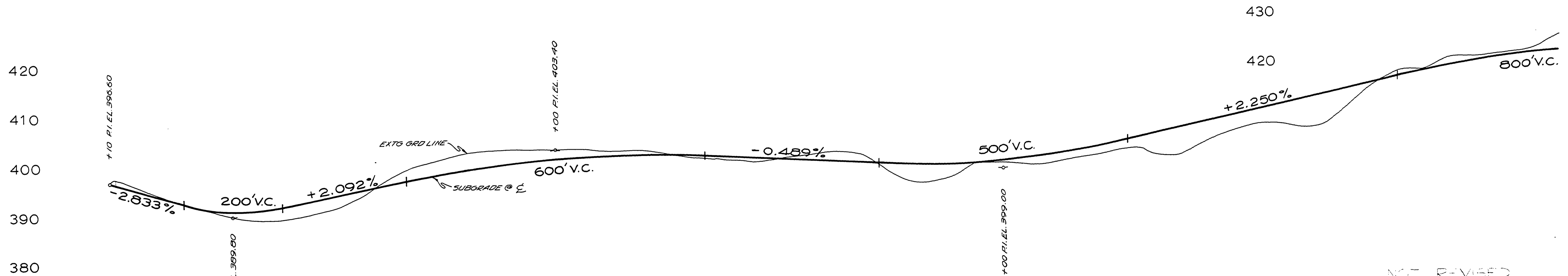
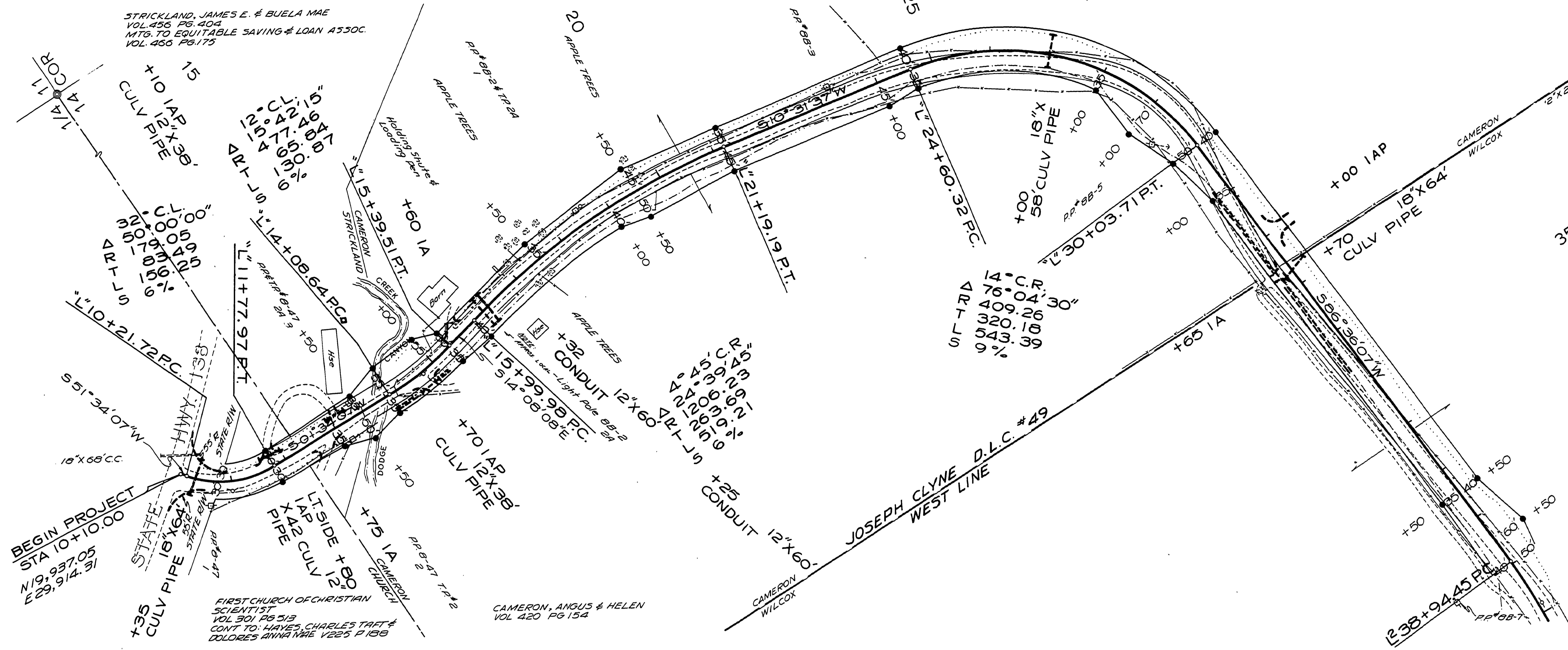


SEC 11 & 14 T25S R6W W.M.

RD 77

FIELD RECEIVED  
1972  
COUNTY SURVEYOR  
DOUGLAS COUNTY, IOWA



NOT REVISED  
AS CONSTRUCTED  
35-  
DOUGLAS COUNTY ROAD DEPT.  
STEPHENS ROAD NO. 77  
1972 SHT 1  
GEORGE E. GRUBB COUNTY ENGR.

00000055

10- 15- 20- 25- 30-

M.P. 0.00-0.55

Co Rd # 77 1972  
skt. 1 (23)