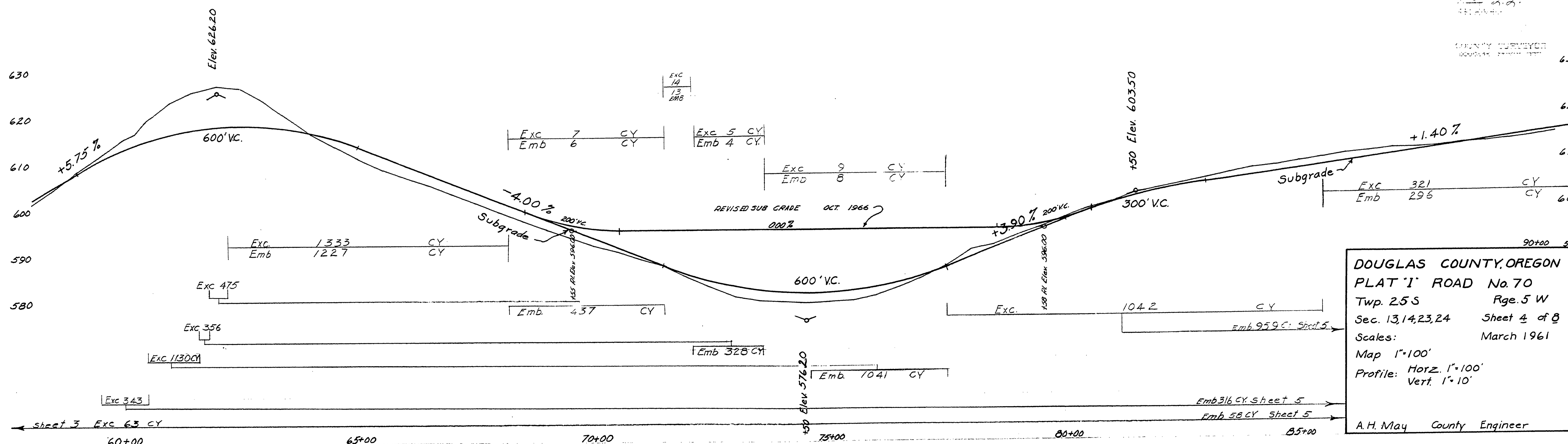
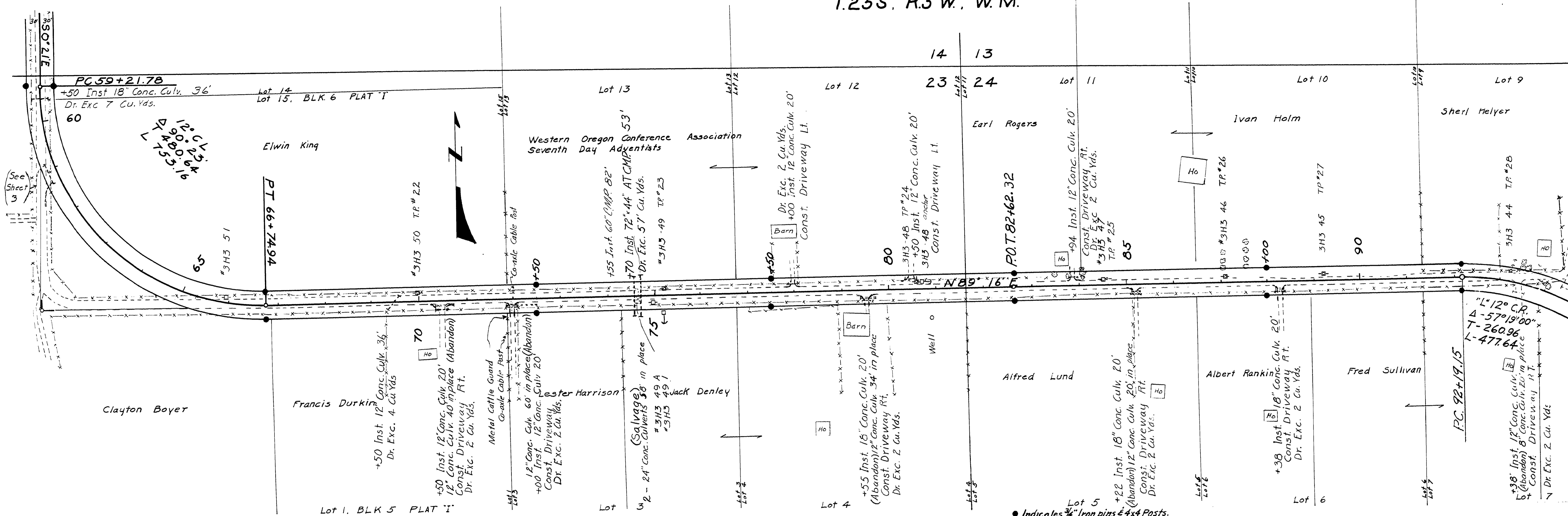


T.25S, R.5 W, W.M.



DOUGLAS COUNTY, OREGON  
 PLAT 'I' ROAD No. 70  
 Twp. 25S Rge. 5 W  
 Sec. 13, 14, 23, 24 Sheet 4 of 8  
 Scales: March 1961  
 Map 1"=100'  
 Profile: Horz. 1"=100'  
 Vert. 1"=10'  
 A.H. May County Engineer

M.P. 1.27-1.76

MAK '61  
 C.R. # 70 SHE. 4 of 8

01270176