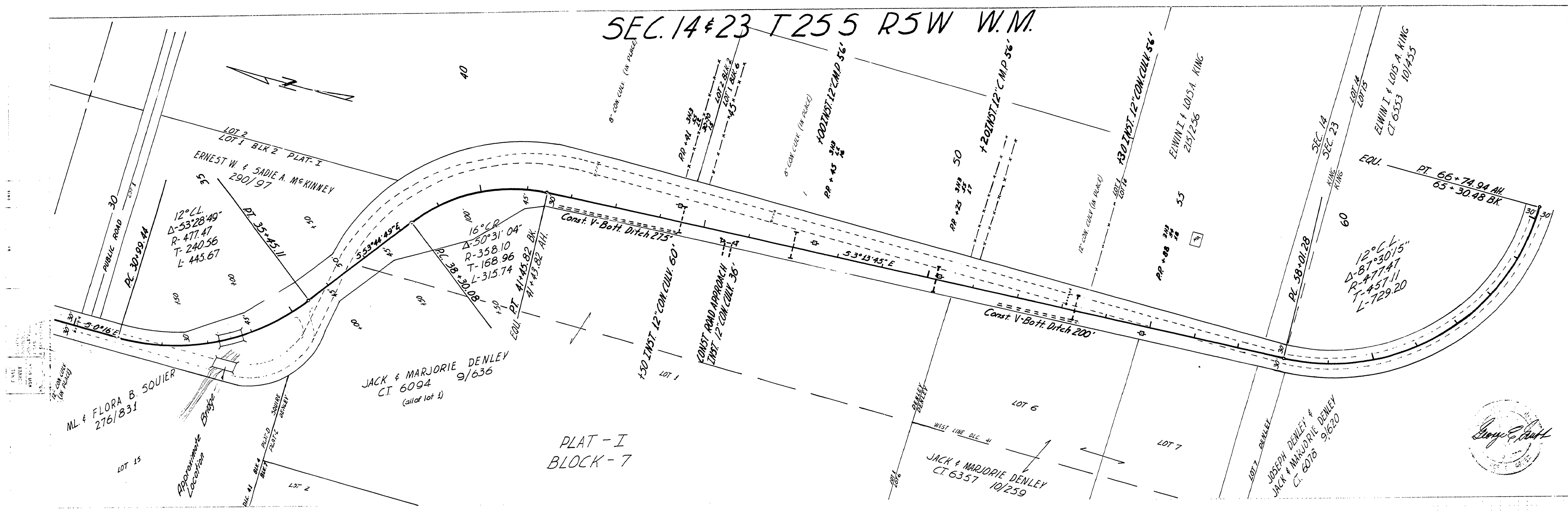
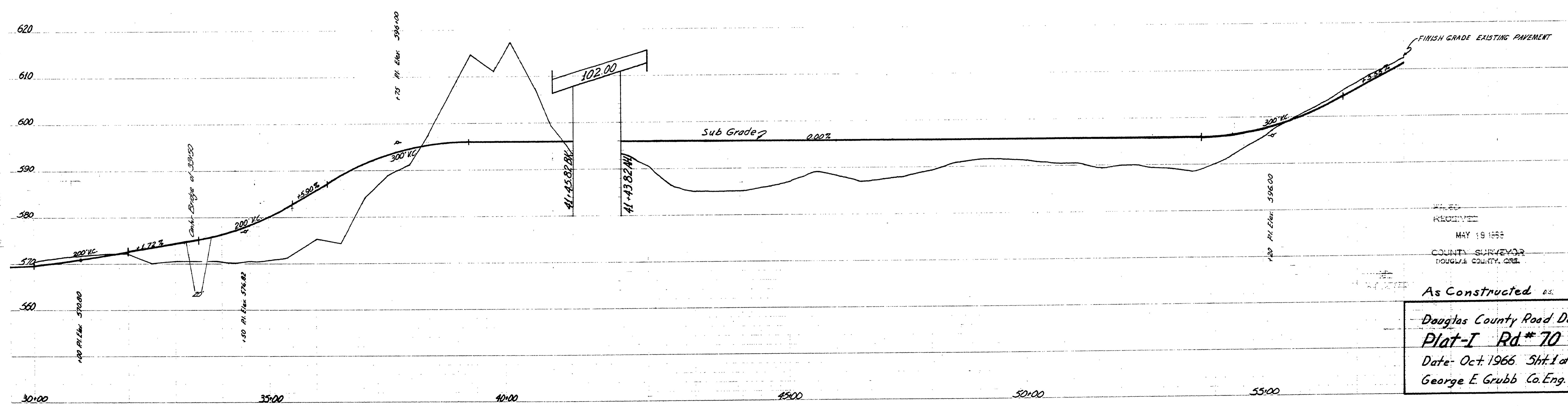


SEC. 14 & 23 T255 R5W W.M.



PLAT - I  
BLOCK - 7



FILED  
RECEIVED  
MAY 19 1966  
COUNTY SURVEYOR  
DOUGLAS COUNTY, ORE.

As Constructed *as*

Douglas County Road Dept  
Plat-I Rd # 70  
Date: Oct. 1966 Sht. 1 of 2  
George E. Grubb Co. Eng.

M.P. 0.59 - 1.26

Oct. 66  
Co. Rd # 70 sht 1 of 2

00590126