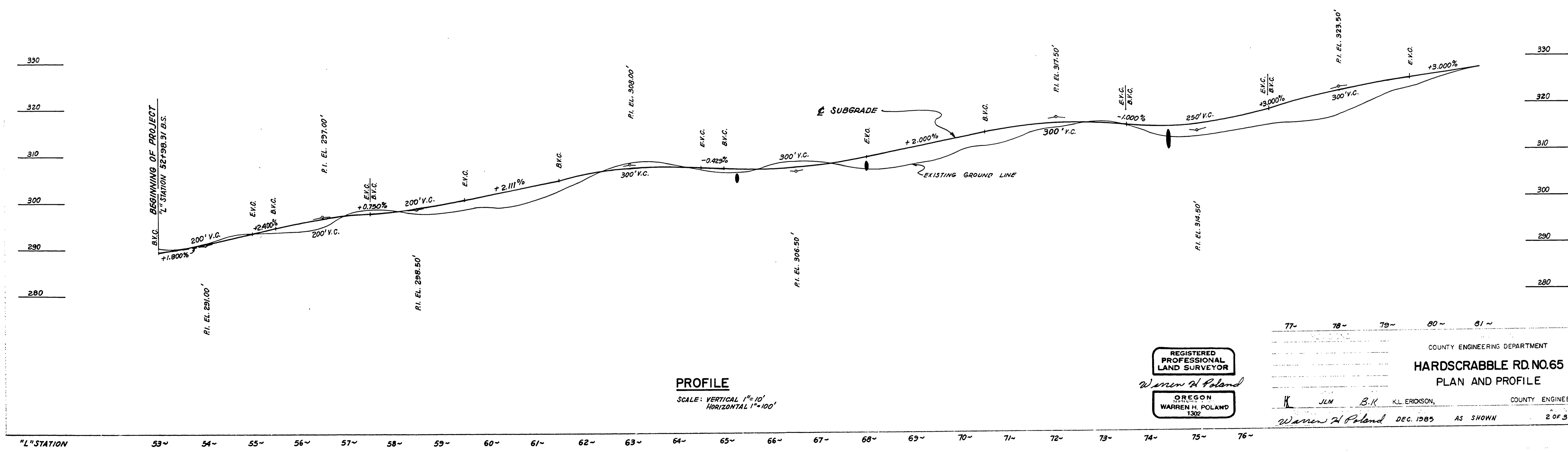
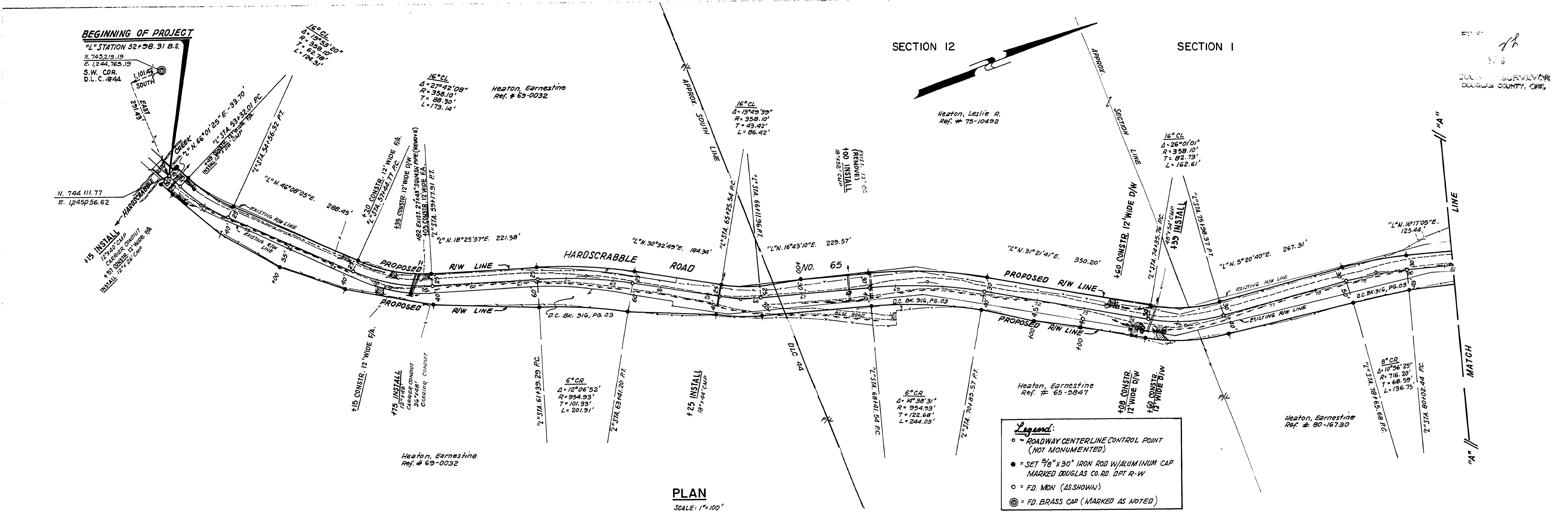


COUNTY ENGINEER
DOUGLAS COUNTY, ORE.



REGISTERED PROFESSIONAL LAND SURVEYOR
Warren H. Poland
OREGON STATE ENGINEER
WARREN H. POLAND
1982

COUNTY ENGINEERING DEPARTMENT
HARDSCRABBLE RD. NO. 65
PLAN AND PROFILE
COUNTY ENGINEER
Warren H. Poland DEC. 1985 AS SHOWN 2 OF 3

01000153