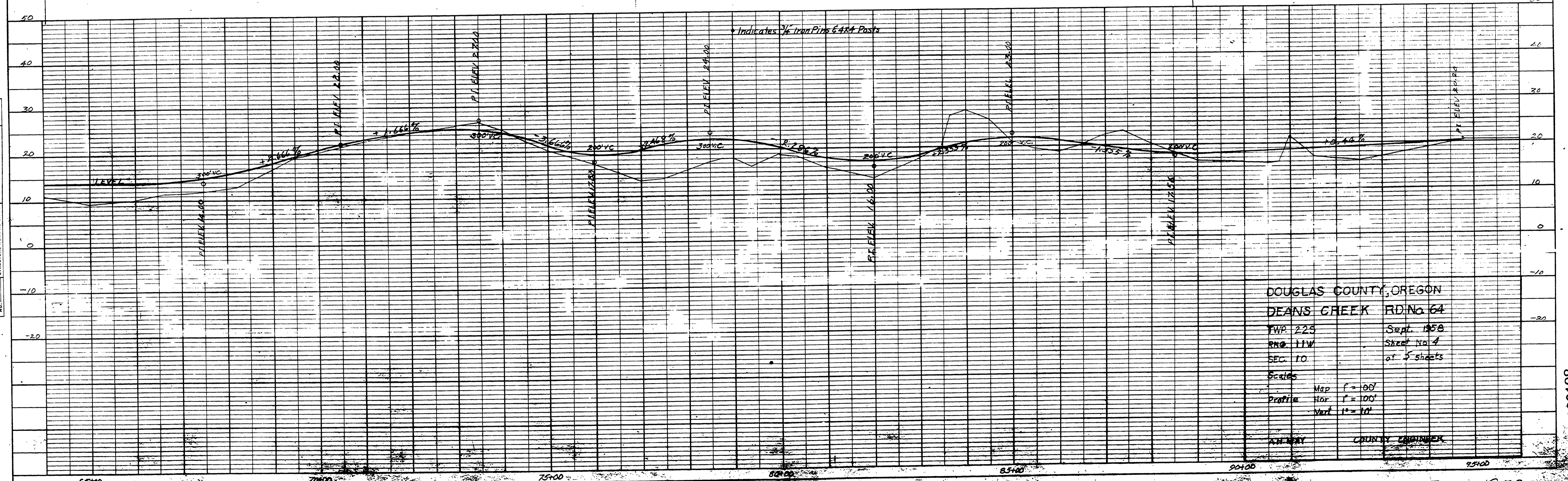
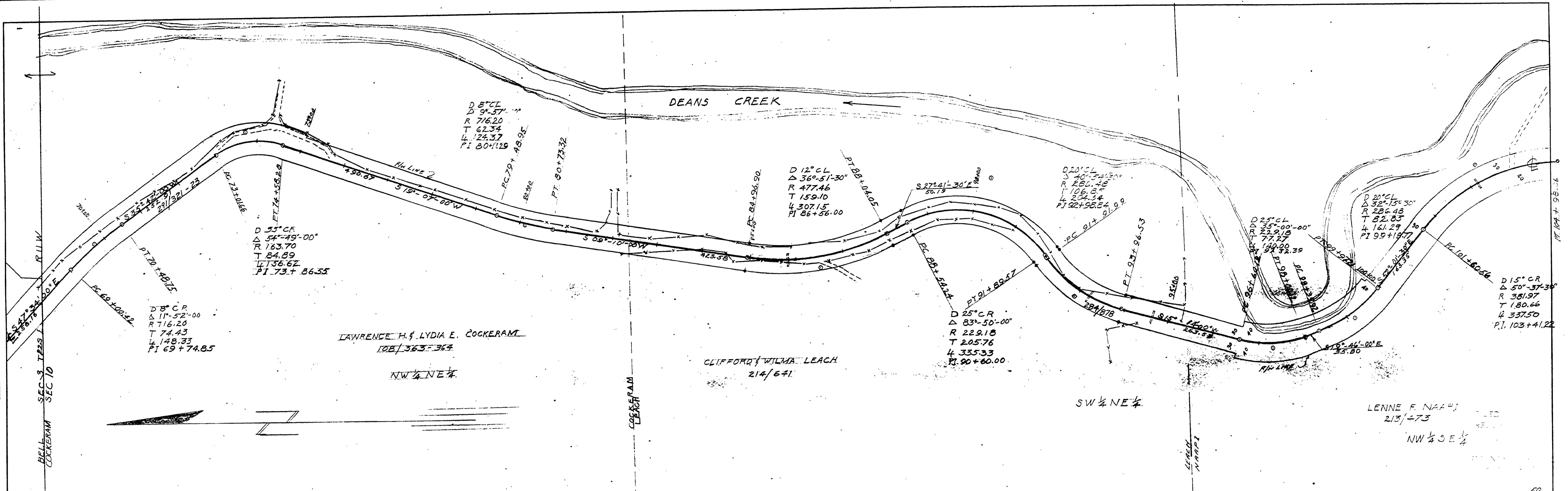


NOTE BOOK GRADES CHECKED BY M. P. 1-28-1958

NOTE BOOK GRADES CHECKED BY M. P. 1-28-1958



DOUGLAS COUNTY, OREGON  
 DEANS CREEK RD No 64  
 FWP 225 Sept. 1958  
 RNO 11W Sheet No 4  
 SEC 10 of 5 sheets  
 Scales: Map 1"=100'  
 Profile Hor 1"=100'  
 Vert 1"=10'  
 COUNTY ENGINEER

PLATE 1-PLAN-PROFILE "D" S. & S. STANDARD  
 100% RAS PAPER - MADE AND PRINTED IN U.S.A.  
 EUGENE DIETZEN CO.

M.P. 1-28-1958

SEPT 1958  
 Rd #64 sheet # 4 of 5 sheets

01280198