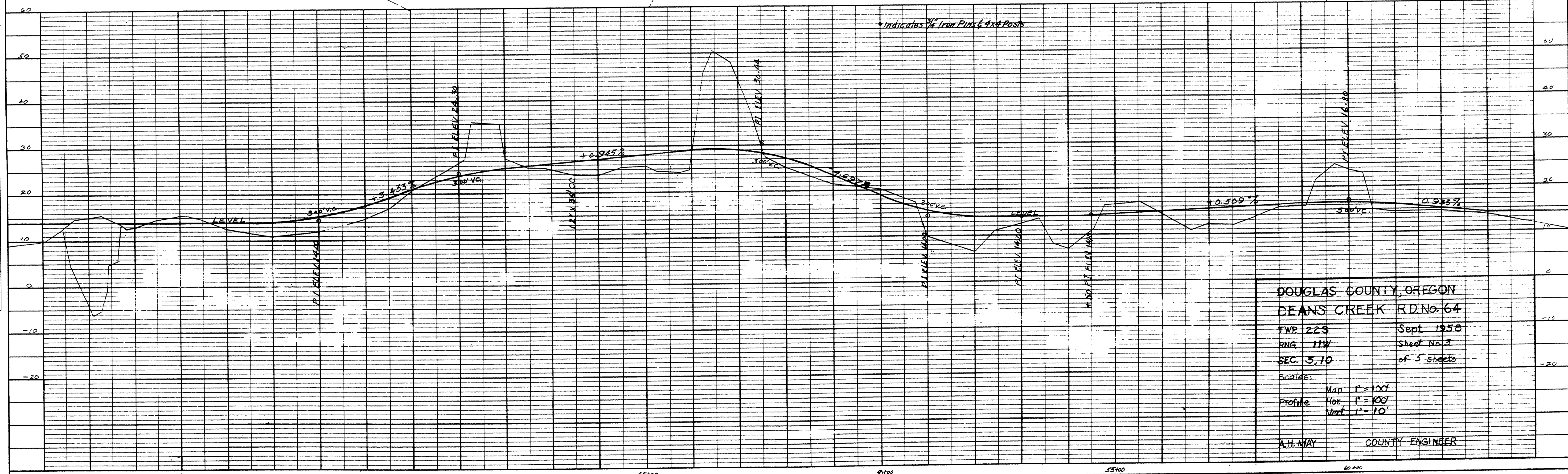
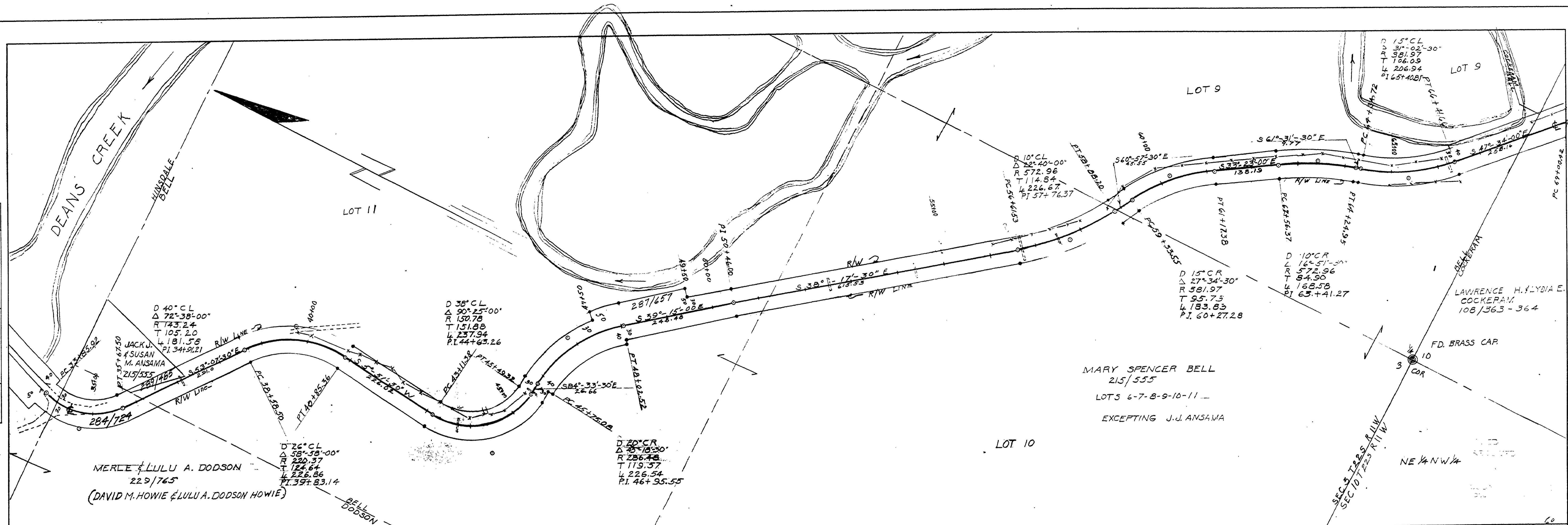


NOTE BOOK ALIGNMENT CHECKED
 R.T. OF WAY CHECKED
 NO.

NOTE BOOK GRADES CHECKED
 B.M. NOTED
 STRUCTURE NOTING DIVIDED
 NO.



DOUGLAS COUNTY, OREGON
 DEANS CREEK RD. NO. 64
 TWP 22S Sept. 1958
 R11W Sheet No. 3
 SEC. 5, 10 of 5 sheets

Scales:
 Map 1" = 100'
 Profile Hor. 1" = 100'
 Vert. 1" = 10'

A.H. MAY COUNTY ENGINEER

PLATE 1-PLAN-PROFILE O.P.R. & R.E. STANDARD
 100% RAG PAPER-MADE AND PRINTED IN U. S. A.
 EUGENE DIEZGEN CO.

M.P. 0.64-1.28

SEP 1958
 Rd #64 sheet #3 of 5 sheets

00640128