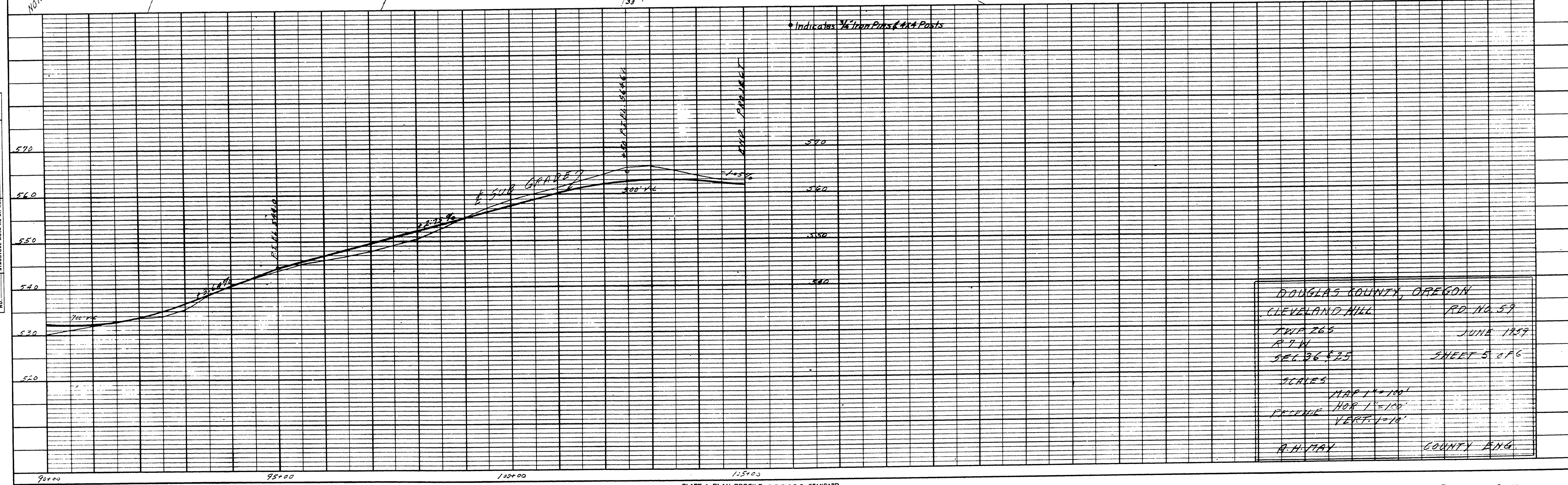
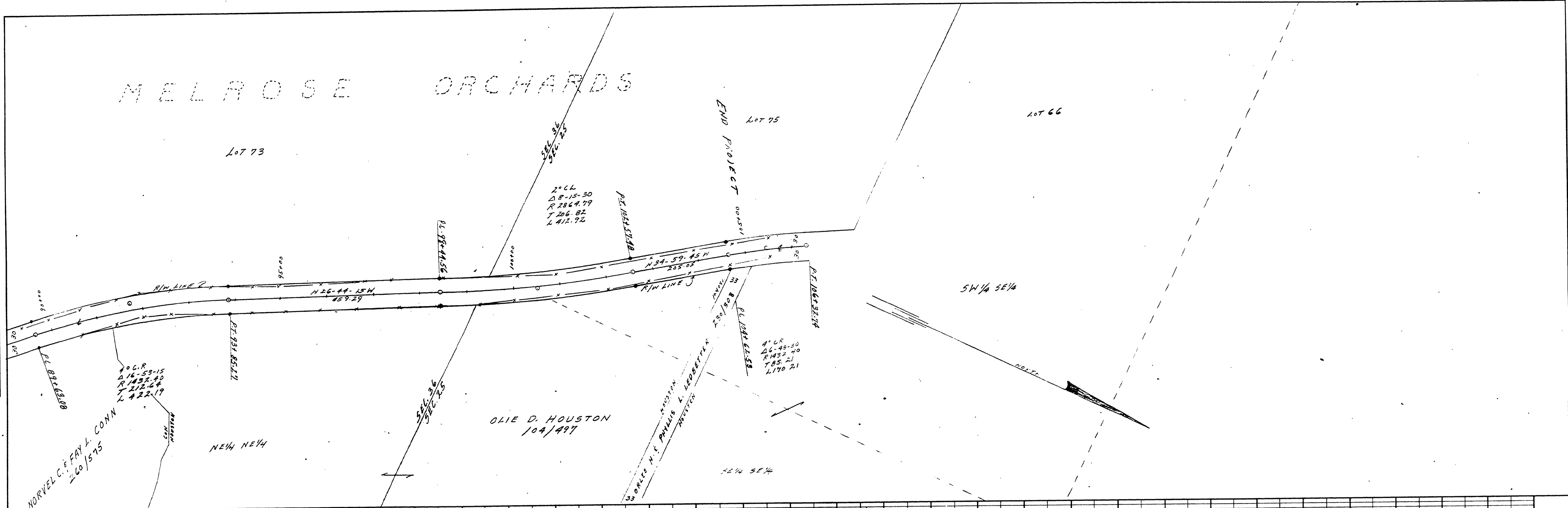


# MELROSE ORCHARDS



PLAN	
BY	DATE
SURVEYED, PLOTTED, AND CHECKED BY: R.H. VAY	
NOTE BOOK NO. 104/497	

PROFILE	
BY	DATE
SURVEYED, PLOTTED, AND CHECKED BY: R.H. VAY	
NOTE BOOK NO. 104/497	

DOUGLAS COUNTY, OREGON  
 CLEVELAND HILL RD. NO. 59  
 TWP. 26S R. 7W  
 SEC. 36 & 25  
 JUNE 1959  
 SHEET 5 OF 6

SCALES  
 MAP 1"=100'  
 HOR. 1"=100'  
 VERT. 1"=10'

R.H. VAY COUNTY ENG.

PLATE 1-PLAN-PROFILE O.P.R. & R.C. STANDARD  
 100% RAG PAPER MADE AND PRINTED IN U.S.A.  
 EUGENE DIEZGEN CO.

M.P. 1.80-2.01

RD # 59  
 JUNE 1959  
 SHEET 5 OF 6

01800201