

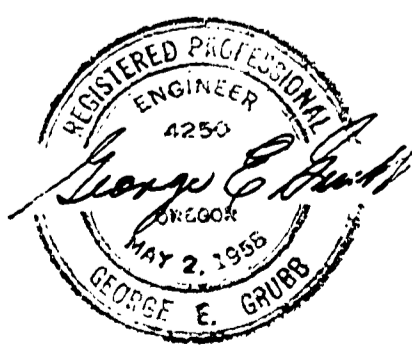
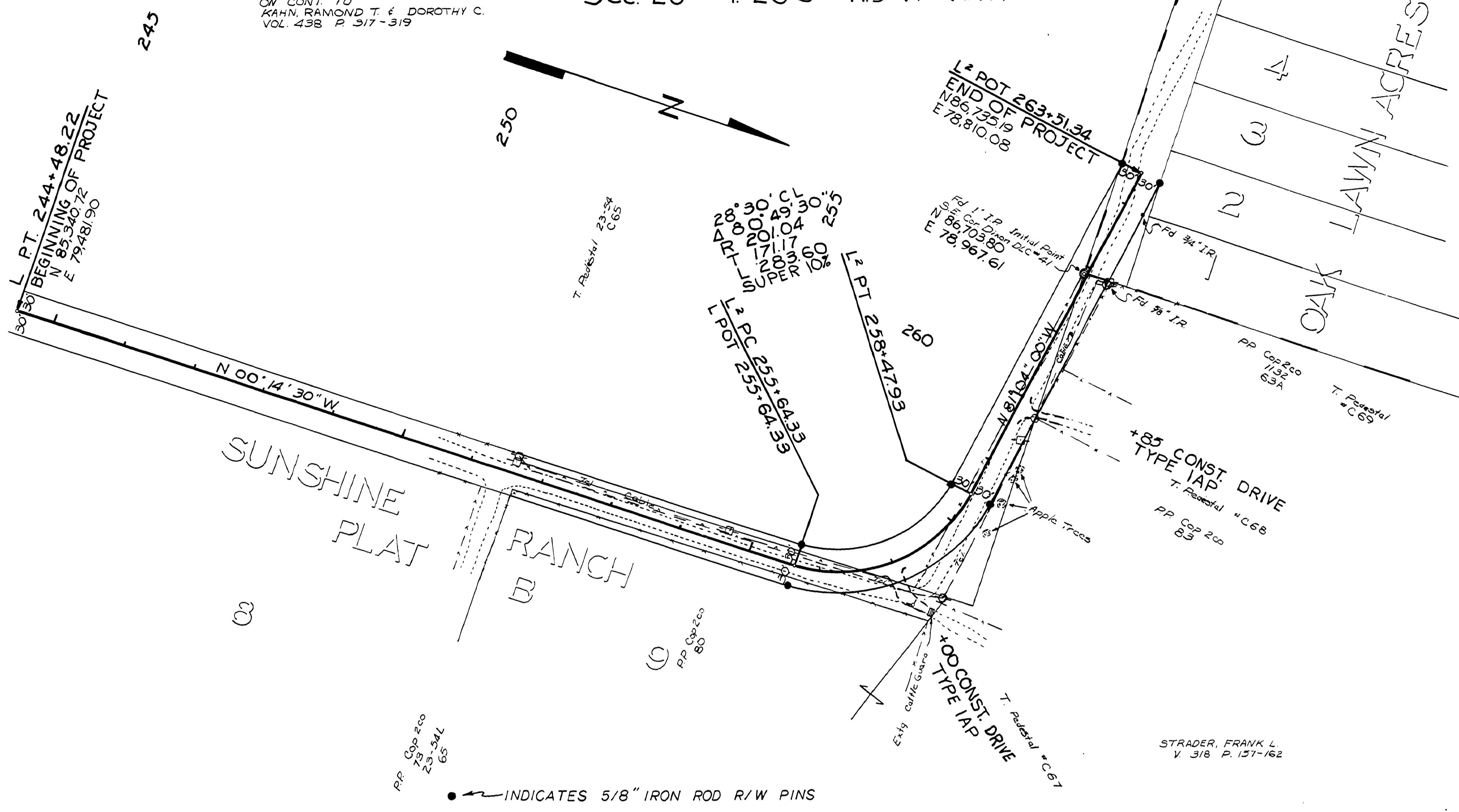
VICINITY MAP

PLAN

PROFILE

TURNER, RICHARD J.
 CIVIL ENGINEER
 1001 W. 10TH ST.
 ROSEBURG, OREGON 97130

Sec. 26 T. 26 S R. 5 W W.M.



Douglas County Road Dept.
 Sunshine Road #58
 May 1970 Sheet 1 of 1
 George E. Grubb County Eng.

04770513

MAY, 1970
 C. Rd. # 58 sheet 1 of 1 (35)