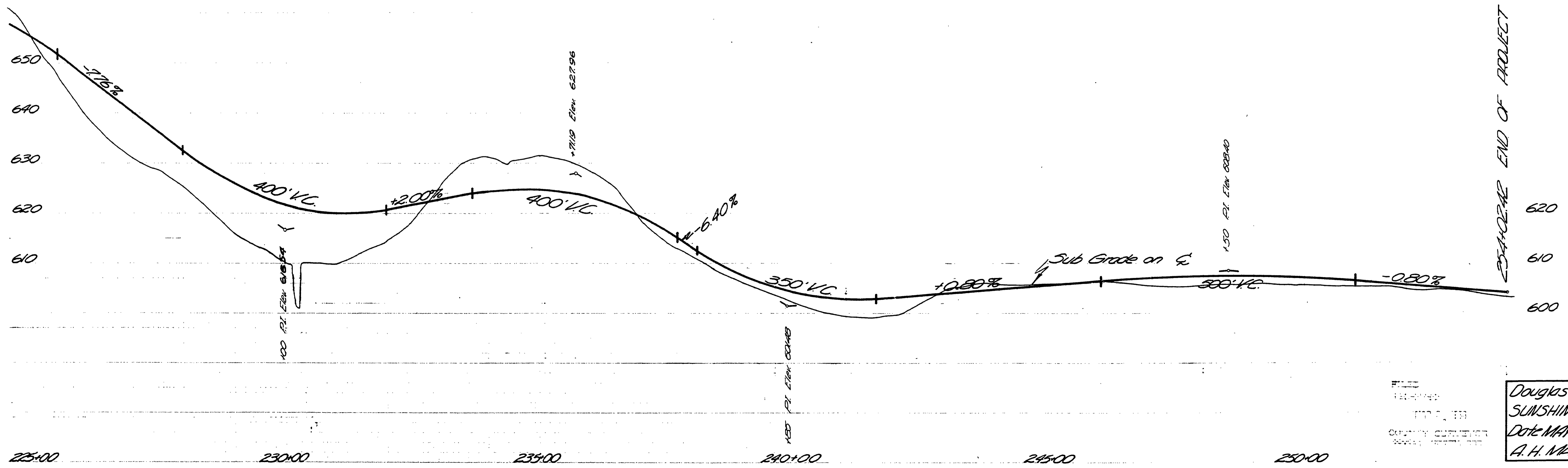
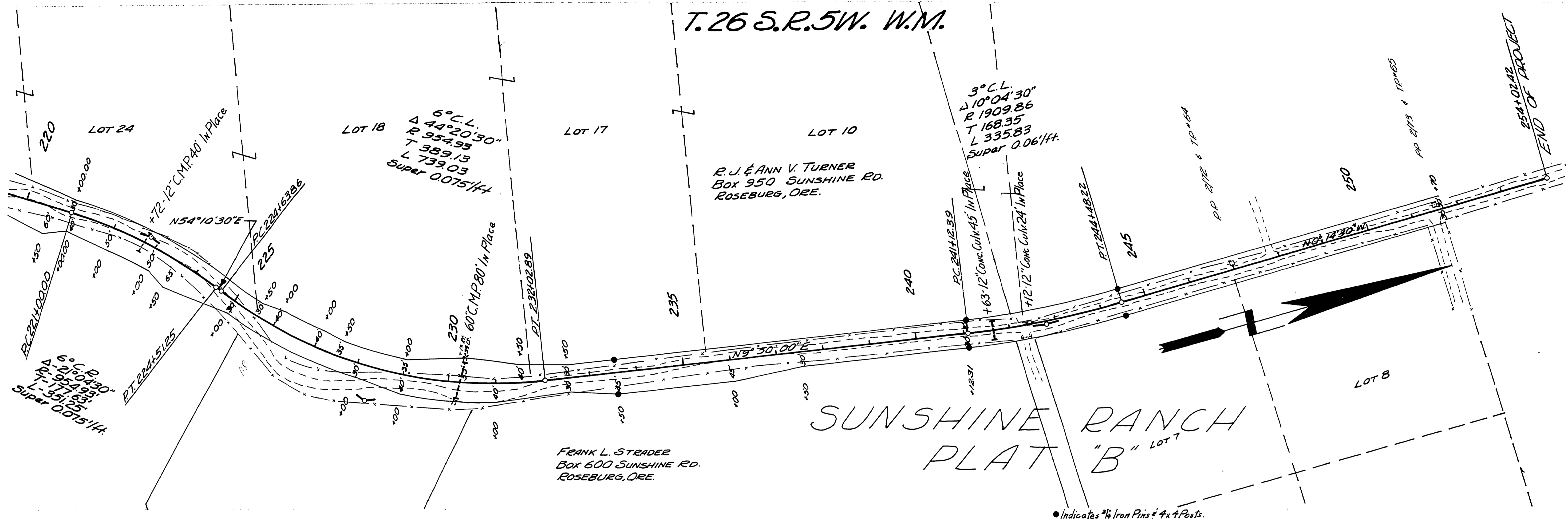


T.26 S.R.5W. W.M.



M.P. 4.51 - 4.97

EAST-WEST END OF PROJECT

FILED
RECEIVED
MAY 11 1965
COUNTY CLERK
ROSEBURG, ORE.

Douglas County Road Dept.
SUNSHINE ROAD No. 58
Date MAY 1965 Sheet 6 of 6
A. H. MAY County Engineer

G. R. # 58 MAY, 1965
Sht. 6 of 6 '64

04510497