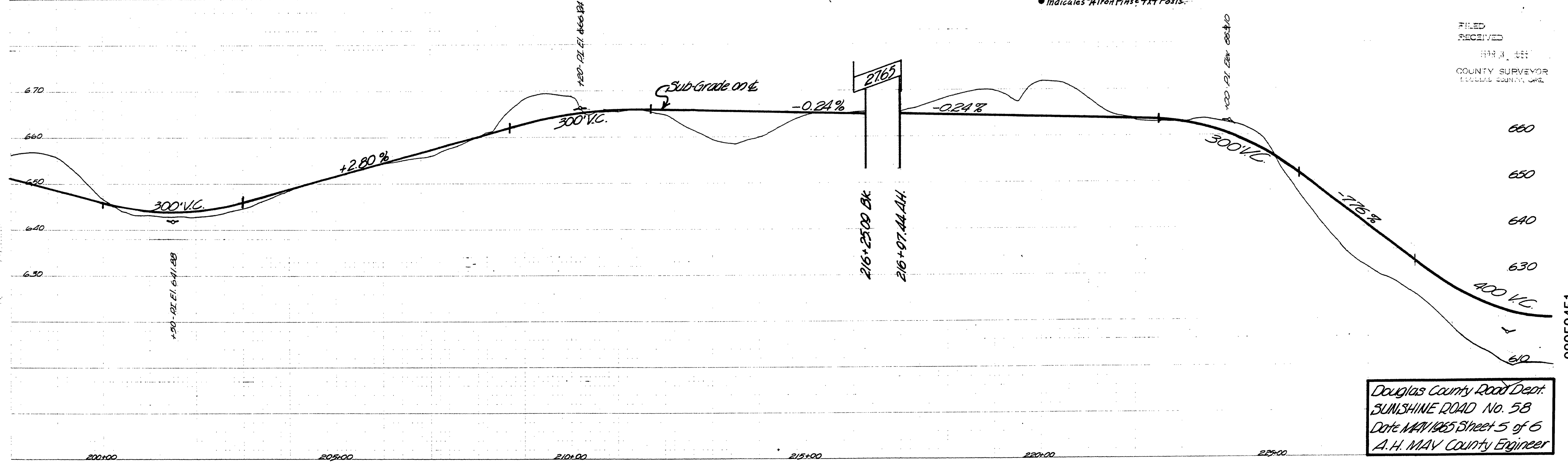
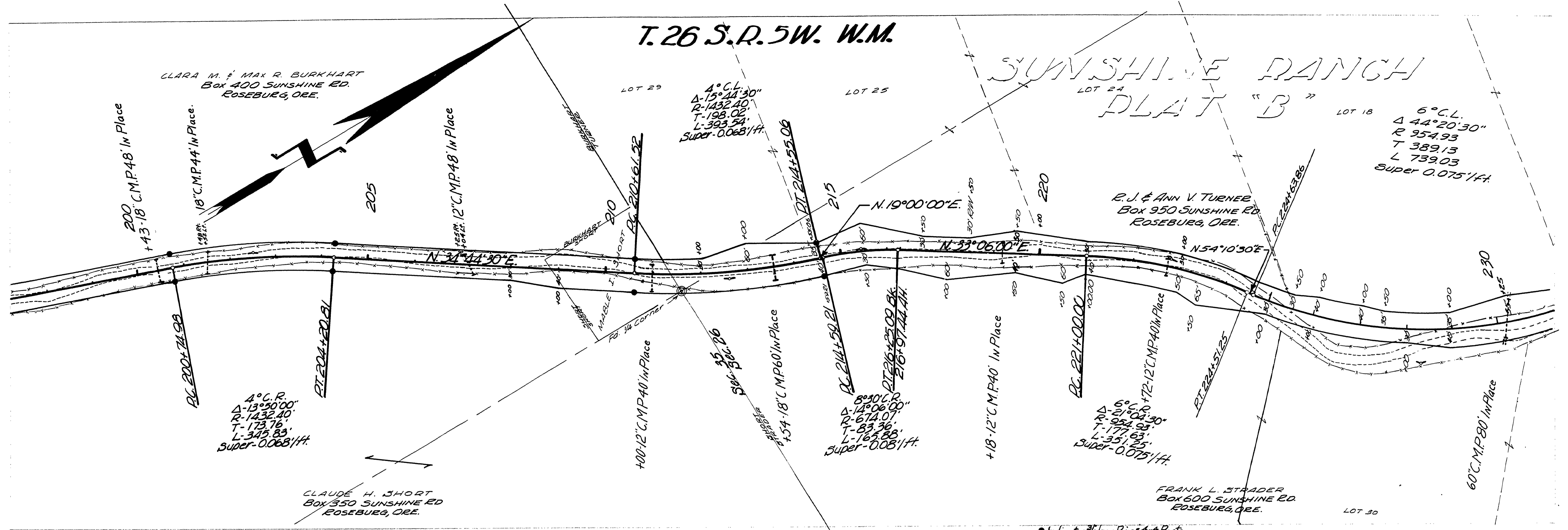


T.26 S.R.5W. W.M.

SUNSHINE RANCH
PLAT "B"



FILED
RECEIVED
MAY 11 1965
COUNTY SURVEYOR
DOUGLAS COUNTY, ORE.

Douglas County Road Dept.
SUNSHINE ROAD No. 58
Date MAY 1965 Sheet 5 of 6
A.H. MAY County Engineer

MAY, 1965
G. Rd. # 58 sht. 5 of 6

M.P. 3.95-4.51

03950451