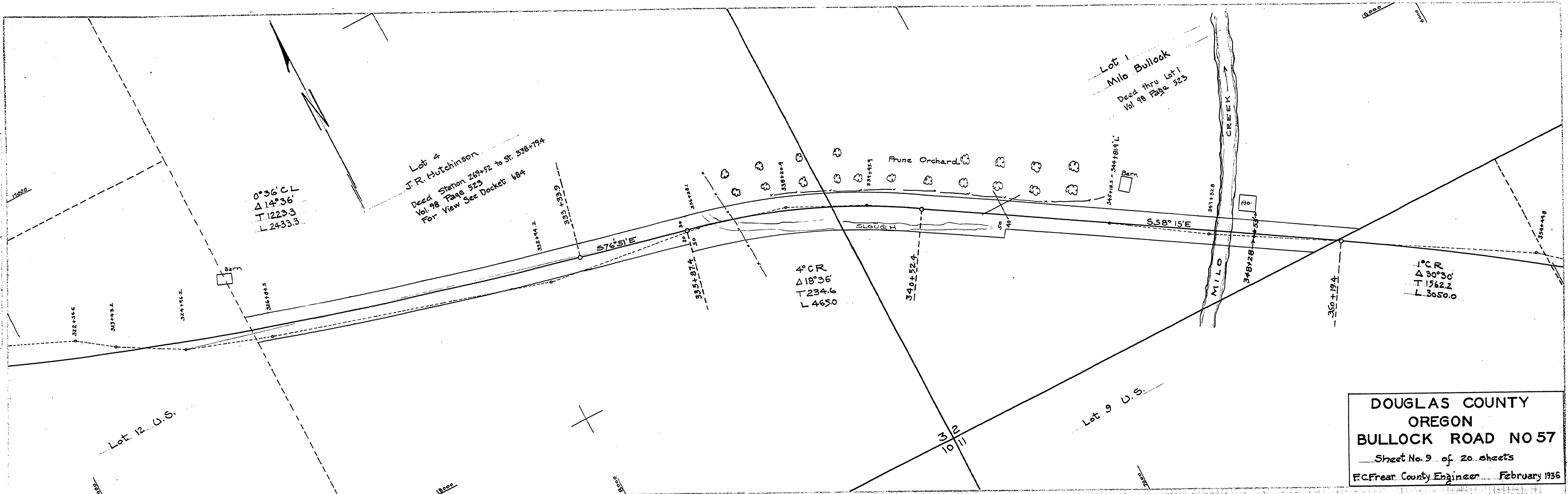
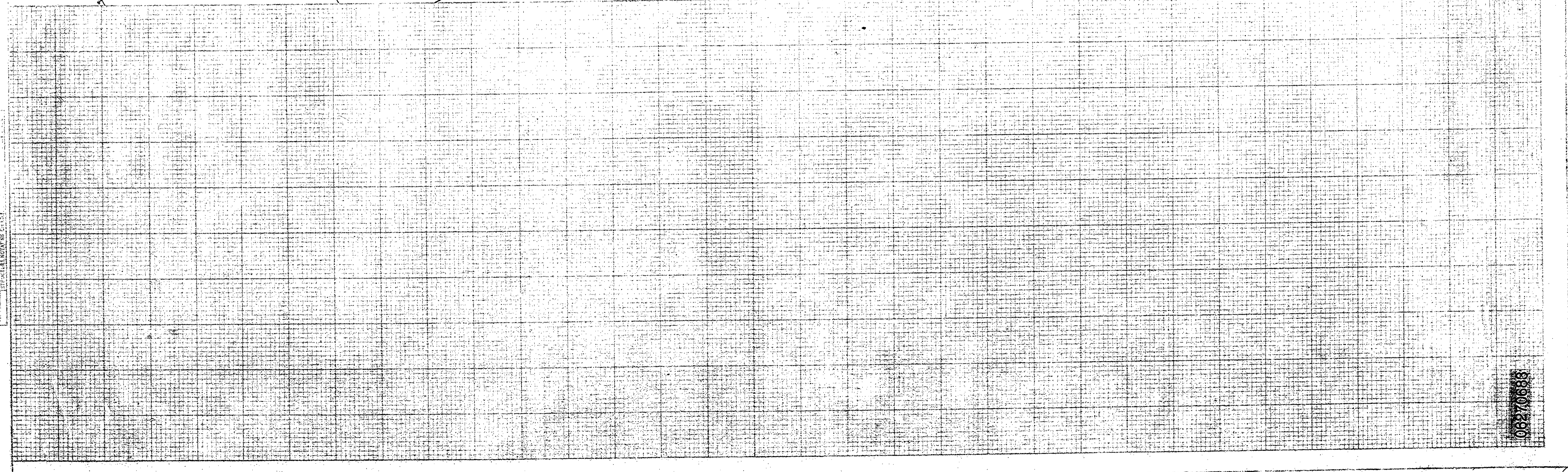


PLAN

PROFILE
 1" = 10' HORIZ.
 1" = 10' VERT.
 CHECKED BY
 NO. 1000



DOUGLAS COUNTY
 OREGON
 BULLOCK ROAD NO 57
 Sheet No. 9 of 20 sheets
 F.C. Frear County Engineer February 1936



00270683

60