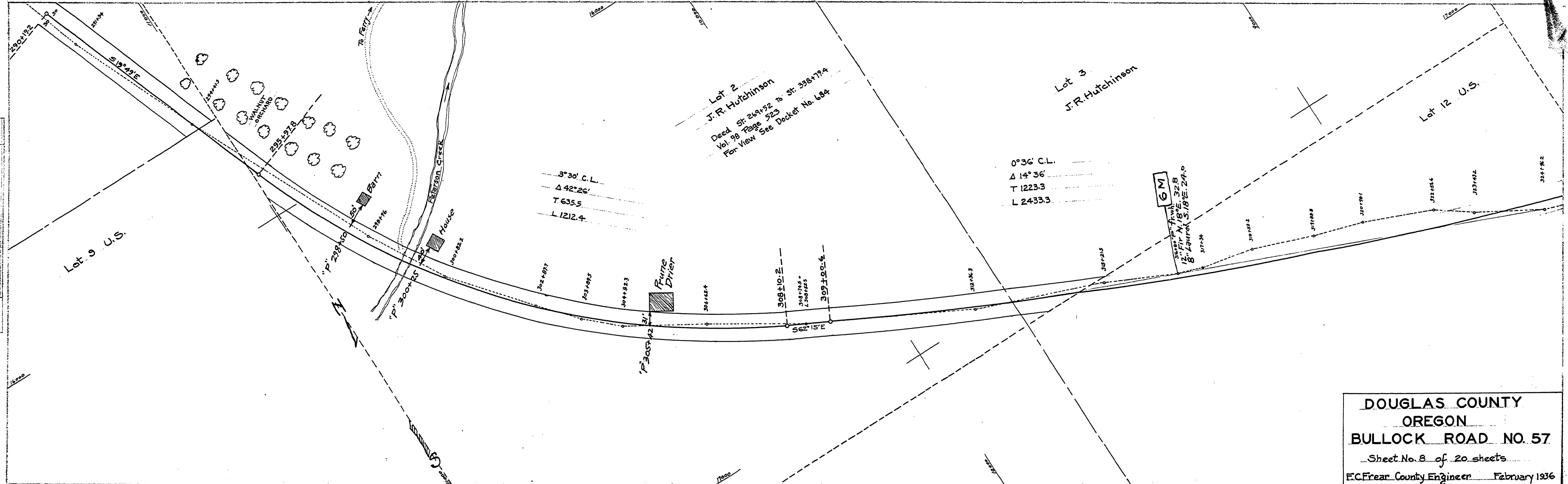


PLAN  
 SURVEYED BY  
 1936  
 1/21 BUCK  
 ALUMINUM CHECKED  
 1/21 BUCK  
 1/21 BUCK

PROFILE  
 SURVEYED BY  
 1936  
 1/21 BUCK  
 ALUMINUM CHECKED  
 1/21 BUCK  
 1/21 BUCK



DOUGLAS COUNTY  
 OREGON  
 BULLOCK ROAD NO. 57  
 Sheet No. 8 of 20 sheets  
 E.C. Frear County Engineer February 1936

10680627