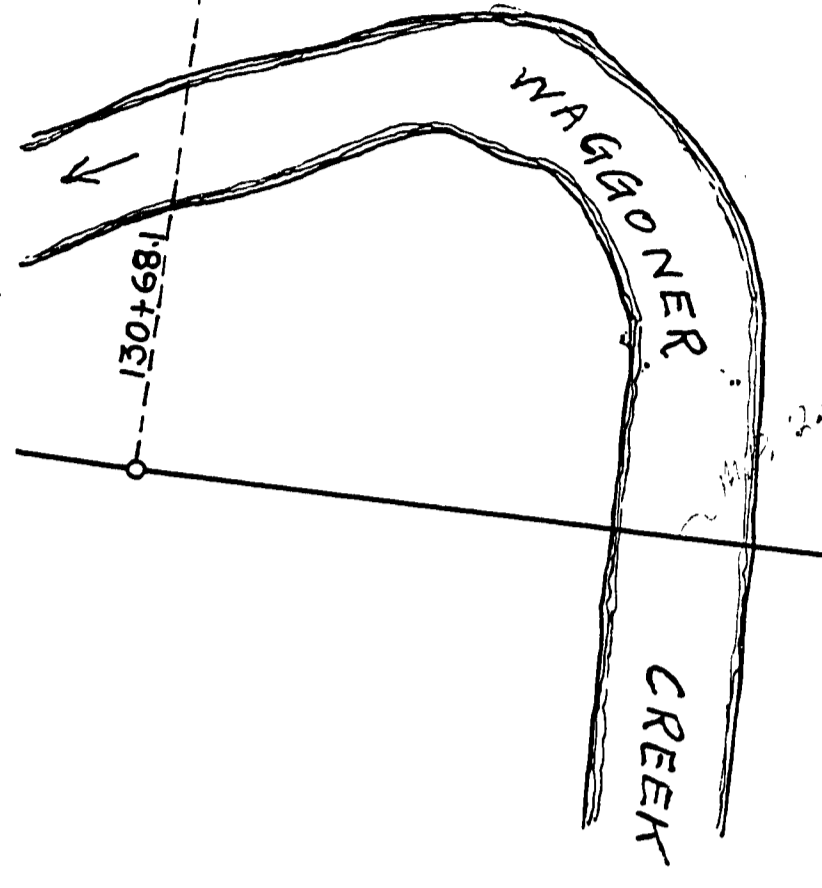


Section 30  
Section 31



Carl Howe Timber Co.  
NW 1/4 NE 1/4

Lot 1 Carl Howe Timber Co.  
NE 1/4 NE 1/4

Carl Howe Timber Co.  
SE 1/4 NE 1/4

For Road View Proceedings See Docket 684

Lot 1 Carl Howe Timber Co.

4° CL  
Δ 33°  
T 424.3  
L 825.0

31  
S 88° 55' E  
L 1272.70  
S 88° 55' E  
L 1272.70

DOUGLAS COUNTY  
OREGON  
BULLOCK ROAD NO. 57  
Sheet No. 3 of 20 sheets  
F.C. Frear County Engineer February 1936

02590321

~ M.P. 2.59 - 3.01

T 23-7 S. 31 #32 FEB 1936 SH 30F20

