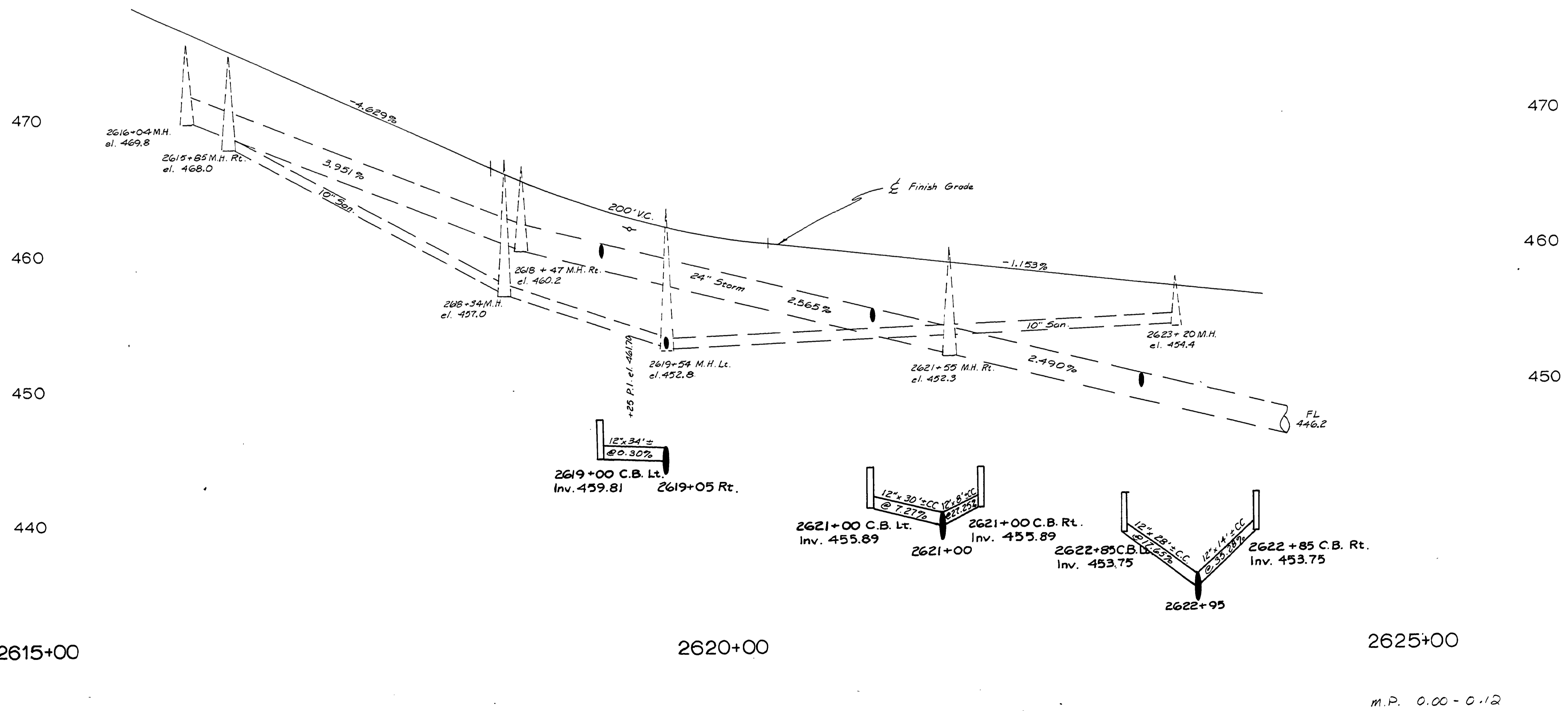
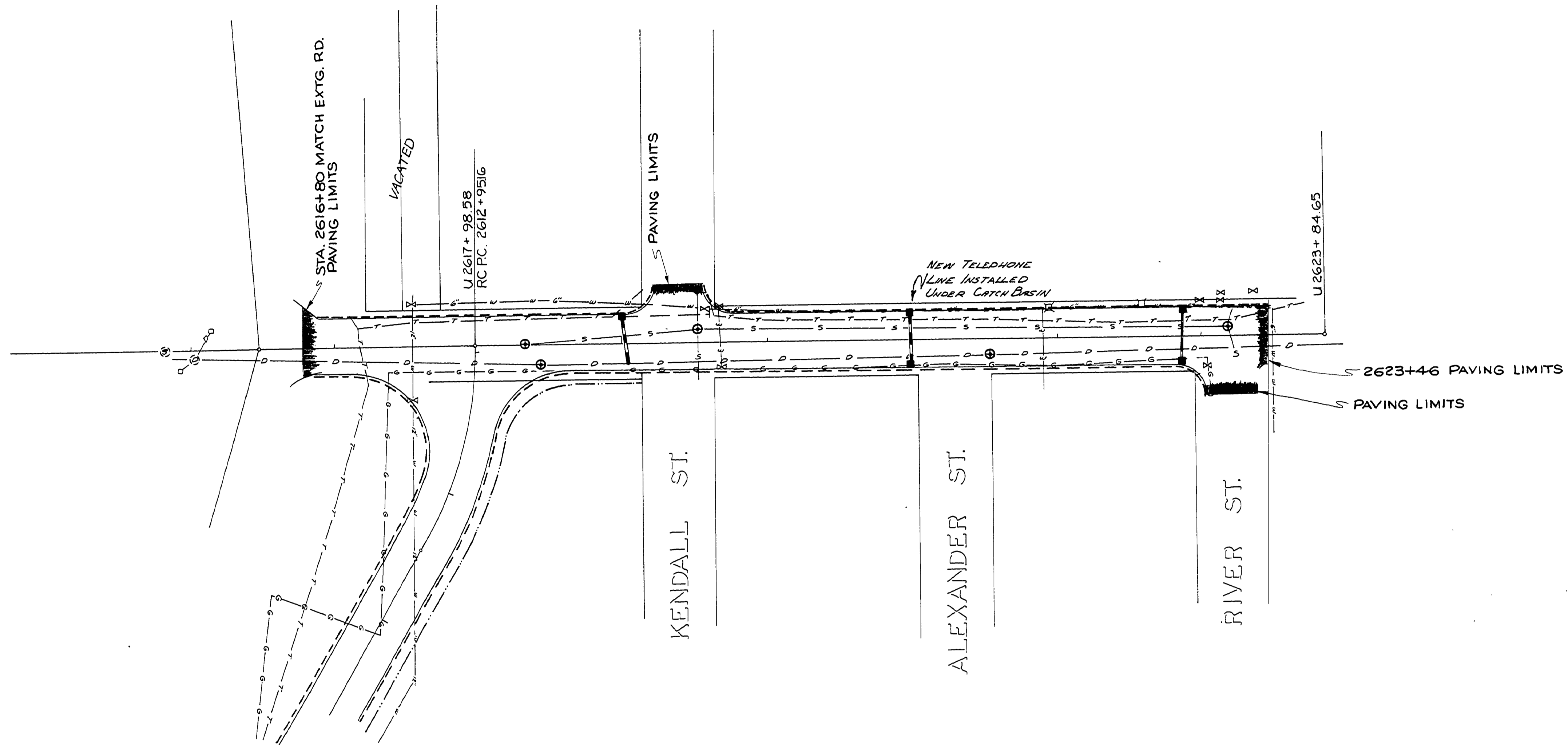


SEC. 25, T27S, R6W, W.M.

FILED
RECEIVED
JUN 21 1977
COUNTY SURVEYOR
DOUGLAS COUNTY, ORE.



AS BUILT 6/19/78 S.B.G.
DOUGLAS COUNTY
PUBLIC WORKS DEPARTMENT
PORTLAND AVENUE
STORM DRAINAGE

GEORGE E. GRUBB, DIRECTOR

1977
C.R. # 56A St. 6 of 15 56.52.17

00000011

6/15

