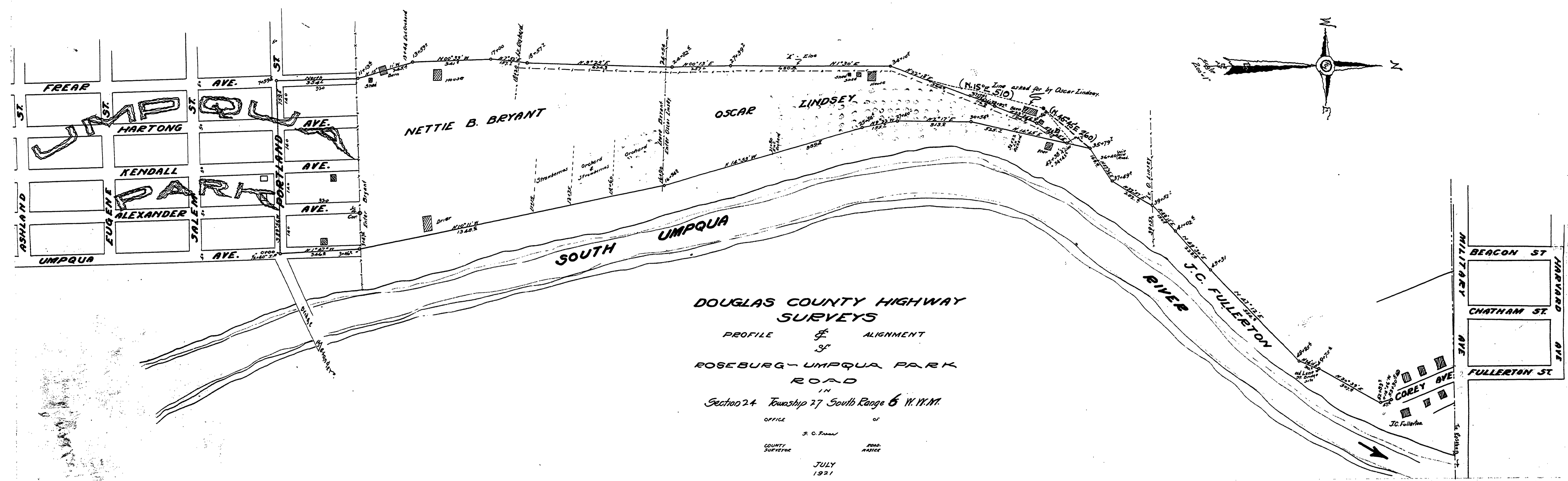


26 23
25 24



DOUGLAS COUNTY HIGHWAY SURVEYS

PROFILE & ALIGNMENT
OF
ROSEBURG-UMPQUA PARK
ROAD

IN
Section 24 Township 27 South Range 6 W.W.M.

OFFICE OF
S. C. FURMAN
COUNTY SURVEYOR ROAD MASTER
JULY
1921

56

10100000

Road No 56

1" = 100'

T. 27-6 S. 24 July 1921