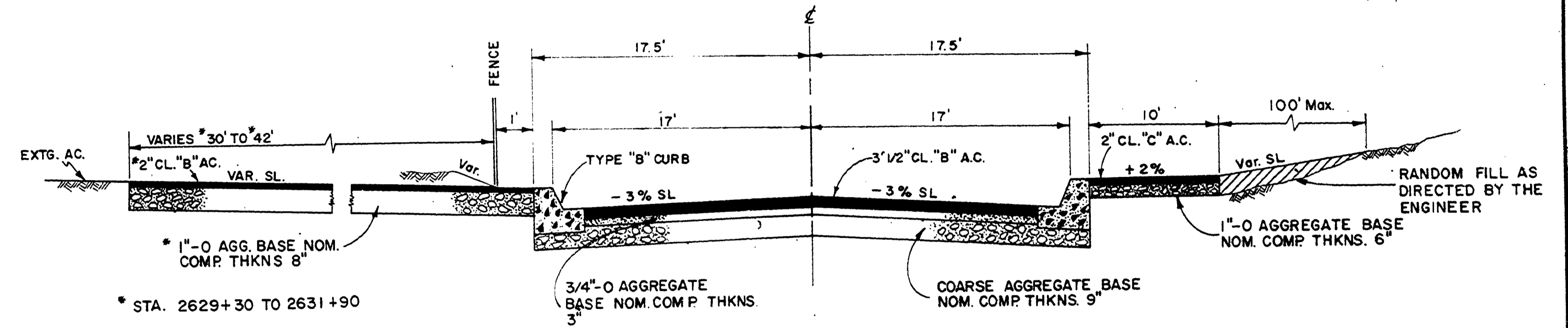
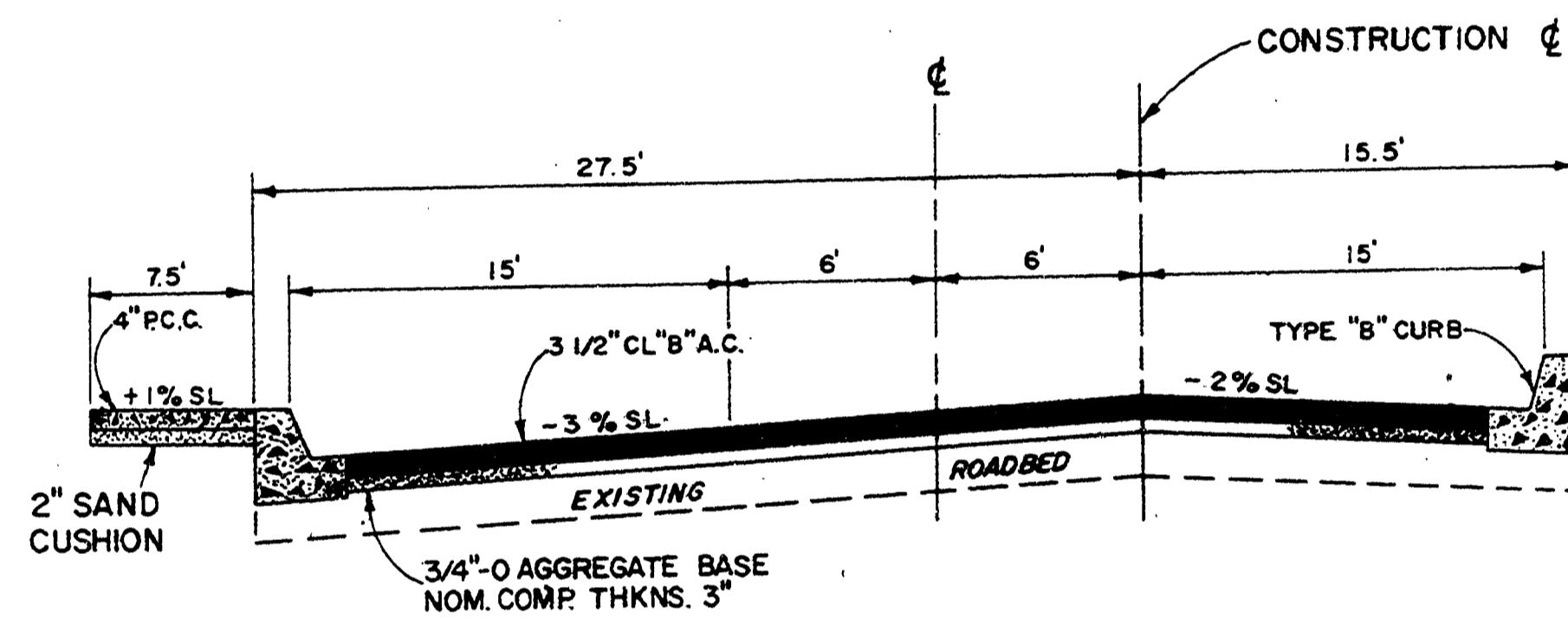


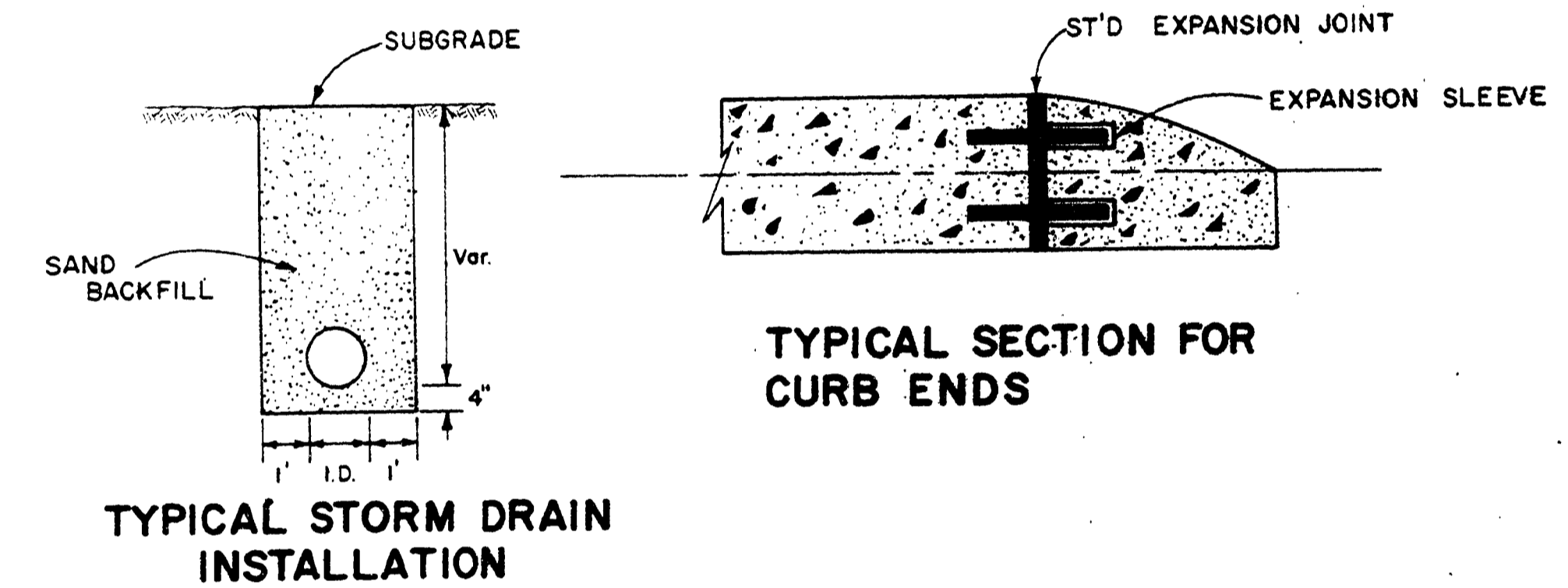
**PORTLAND AVE.  
TYPICAL SECTION  
STA. 2616+80 TO 2623+85**



**FREAR STREET  
TYPICAL SECTION  
STA. 2629+50 TO 2634+63.03 PT.**

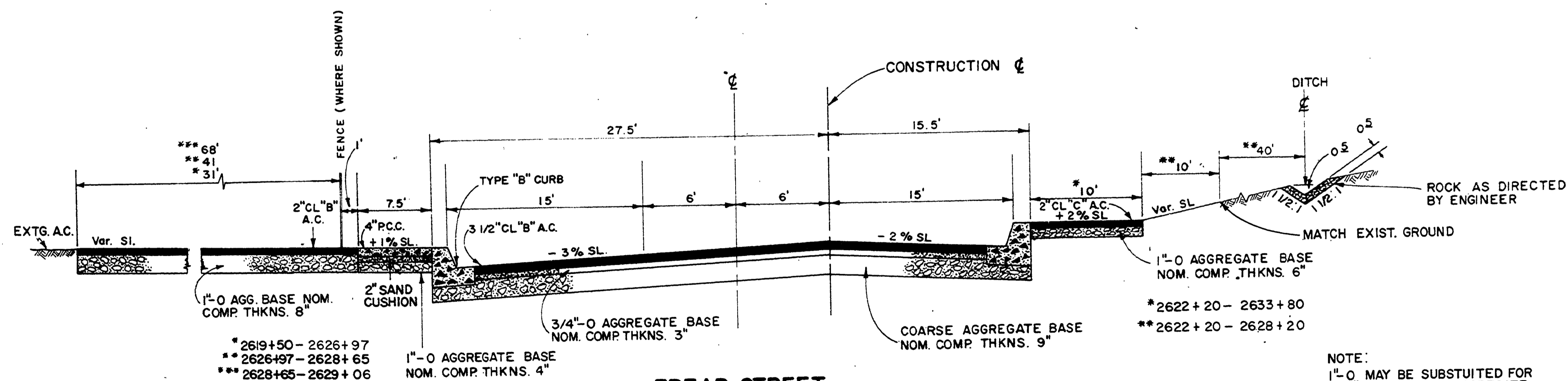


**FREAR STREET  
TYPICAL SECTION  
STA. 2613+15 TO 2618+50**

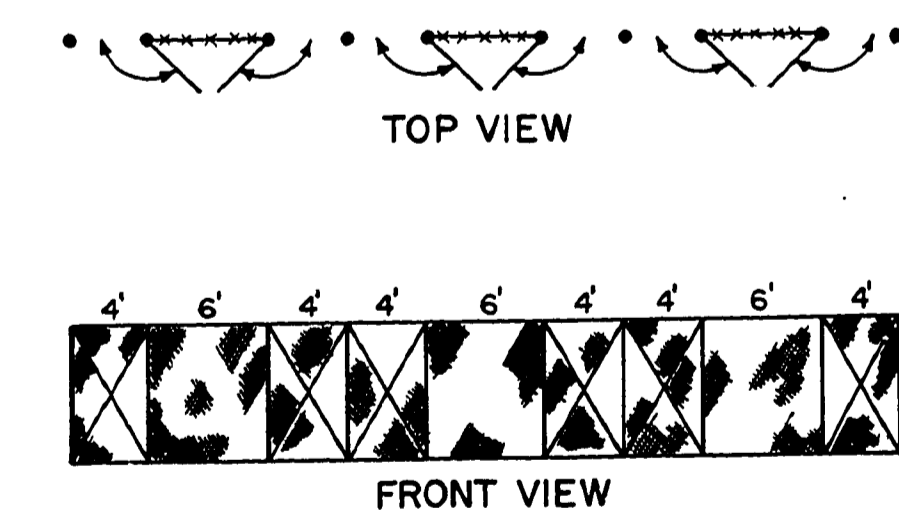


**TYPICAL STORM DRAIN  
INSTALLATION**

**TYPICAL SECTION FOR  
CURB ENDS**



**FREAR STREET  
TYPICAL SECTION  
STA. 2618+50 TO 2628+50  
TRANSITION STA. 2628+50 TO 2629+50**



**CHAIN LINK GATE INSTALLATION DETAIL**

NOTE:  
1" O. MAY BE SUBSTITUTED FOR  
3/4" O. & COARSE AGGREGATE  
BASE

SURVEYED	J.L.	<b>DOUGLAS COUNTY PUBLIC WORKS DEPARTMENT PORTLAND AVENUE FREAR STREET TYPICAL SECTION GEORGE E. GRUBB, DIRECTOR</b>
DESIGNED	B.B.	
DRAFTED	B.B.	
REVIEWED	W.H.P.	
DATE	1977	

AS BUILT 6-20-78 RUF

1977  
C. Rd # 56 Sit. 2 of 15 56 x 56

0000TYPI