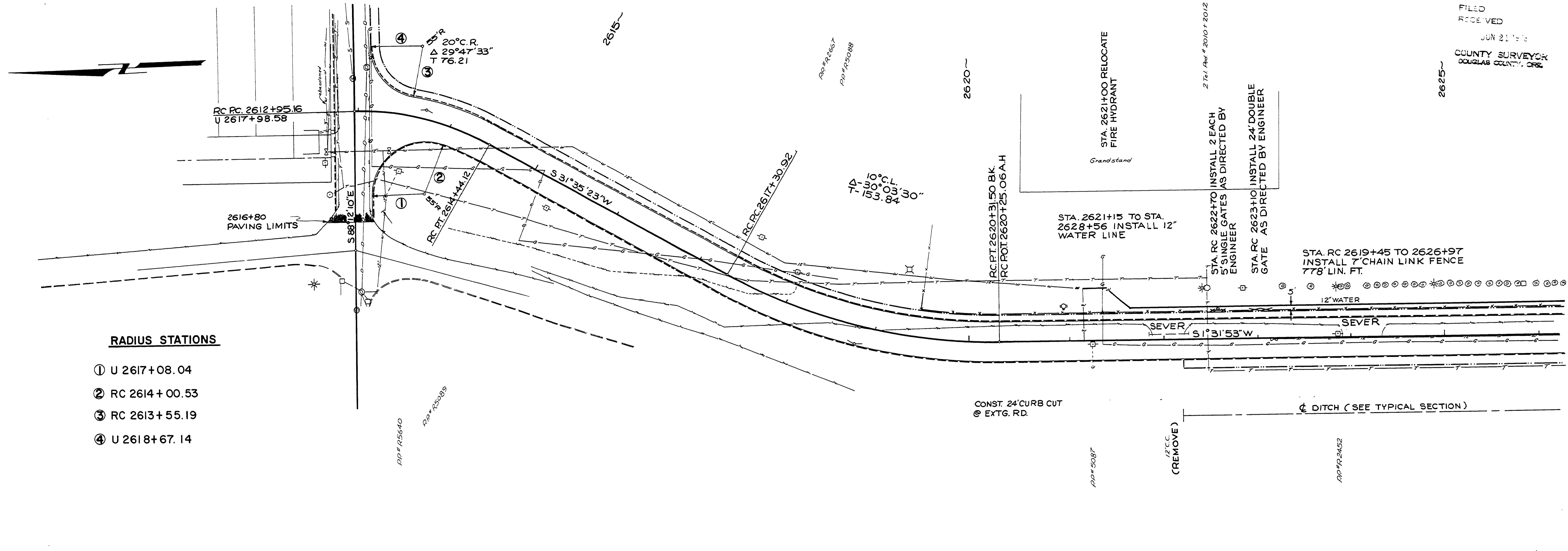


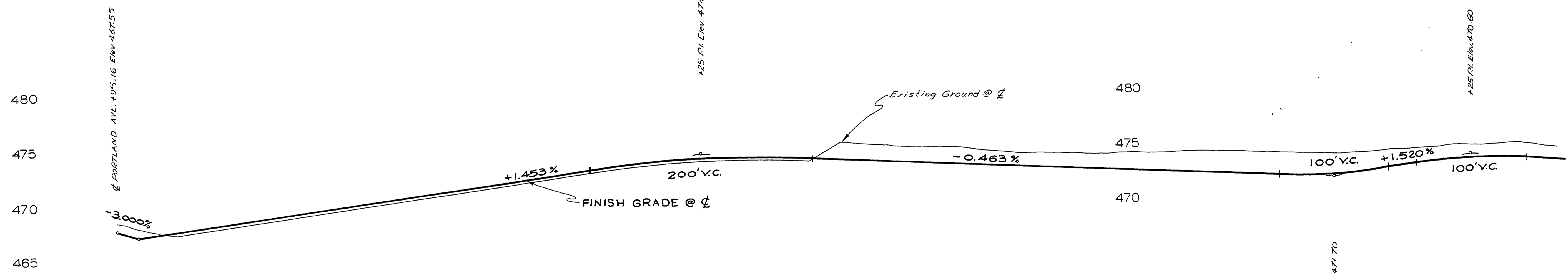
SEC. 25 T 27 S R 6 W W.M.

FILED
RECEIVED
JUN 21 1977
COUNTY SURVEYOR
DOUGLAS COUNTY, ORG



RADIUS STATIONS

- ① U 2617+08.04
- ② RC 2614+00.53
- ③ RC 2613+55.19
- ④ U 2618+67.14



CONST. 24' CURB CUT @ EXTG. RD.

CL DITCH (SEE TYPICAL SECTION)

100' P.I. Elev. 471.70

2625+00
DOUGLAS COUNTY
PUBLIC WORKS DEPARTMENT
FREAR STREET
ROAD PLAN

GEORGE E. GRUBB, DIRECTOR

1977
C. Rd. # 56 sht. 7 of 15

REVISED 8-8-77
M.P. 0.00 - 0.25

00000025

7/15

73