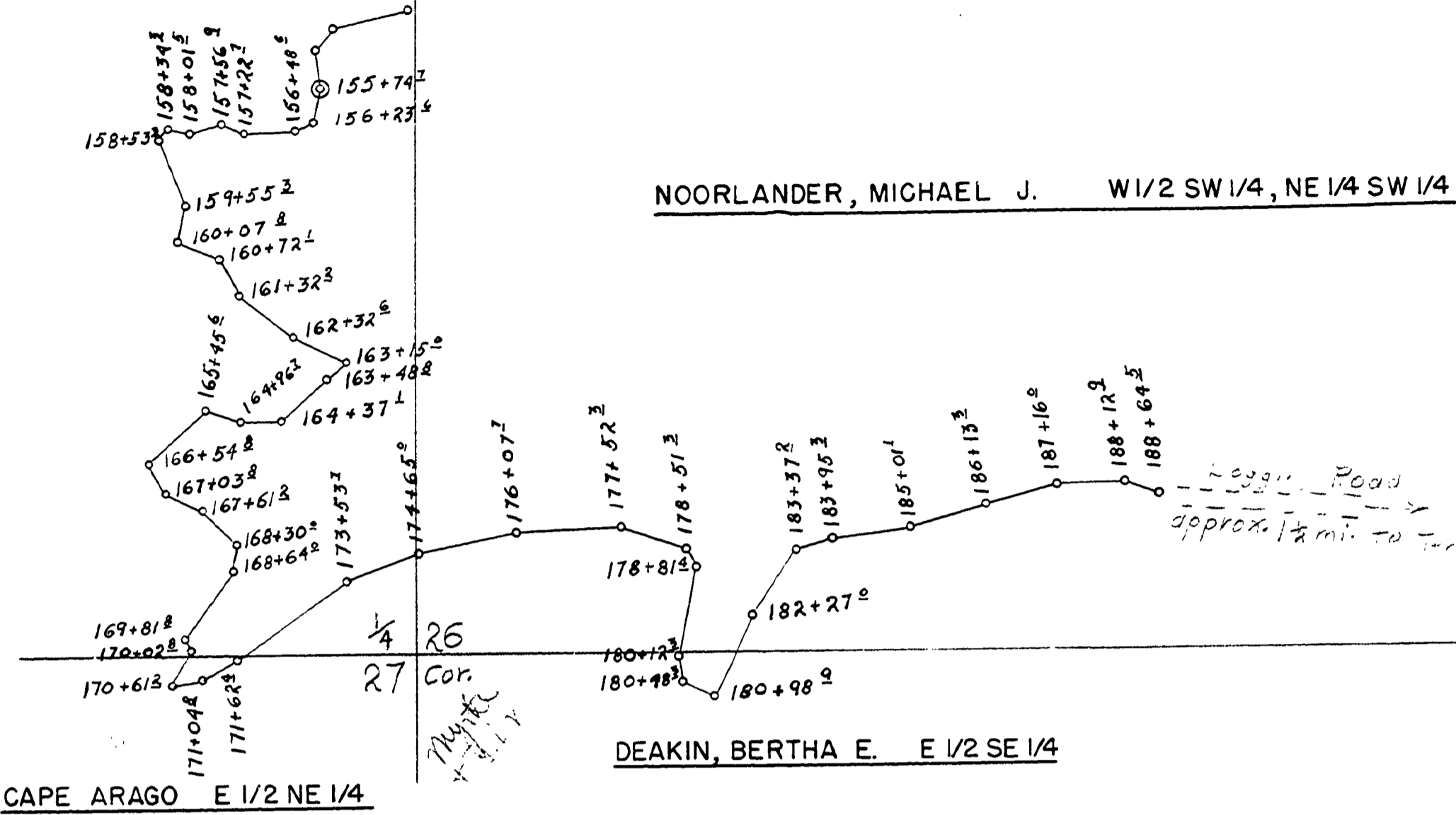


Station	Distance	Course	Station	Distance	Course
141+21 ¹			151+22 ²		
141+58 ²	37 ^R	N 28 1/2 W	34 ^R		N 22 1/2 E
142+02 ^R	43 ^R	N 43 1/2 W	44 ^R		N 16 W
142+75 ^R	72 ^R	N 17 1/2 W	32 ^R		N 11 1/2 E
143+40 ^R	65 ^R	S 58 1/2 W	19 ^R		N 51 1/2 W
144+44 ^R	103 ^R	S 37 W	102 ^R		S 69 W
145+04 ^R	60 ^R	N 83 1/2 W	52 ^R		N 78 1/2 W
145+91 ^R	87 ^R	N 46 3/4 W	64 ^R		S 27 1/2 W
146+11 ^R	19 ^R	N 87 W	60 ^L		S 61 3/4 W
147+09 ^R	97 ^R	S 29 3/4 W	100 ^L		S 37 3/4 W
147+92 ^R	83 ^R	S 60 3/4 W	82 ^R		S 26 W
148+32 ^R	39 ^R	S 44 W	33 ^R		N 42 W
149+50 ^R	118 ^L	S 43 W	88 ^R		N 42 3/4 W
150+32 ^R	82 ^R	S 75 W	54 ^R		N
150+82 ^R	49 ^R	S 41 W	48 ^R		N 19 1/2 E
151+81 ^R	98 ^R	S 24 3/4 W	109 ^R		N 43 3/4 W
152+29 ^R	47 ^R	N 40 W	49 ^R		S 54 1/2 W
153+06 ^R	77 ^R	N 33 1/2 W	57 ^R		S 26 3/4 W
154+78 ^R	62 ^R	N 64 3/4 W	68 ^R		S 45 1/2 W
155+16 ^R	109 ^R	N 13 1/2 W	34 ^R		N 81 1/2 W
155+74 ^R	38 ^R	N 53 1/2 W	117 ^R		N 55 1/2 W
156+23 ^R	57 ^R	S 82 3/4 W	21 ^R		S 65 1/2 W
156+48 ^R	48 ^R	N 78 1/2 W	58 ^R		N 60 1/2 W
157+22 ^R	74 ^L	N 01 1/2 W	43 ^R		S 09 1/2 E
			57 ^R		S 30 1/2 E

CAPE ARAGO NW 1/4



CAPE ARAGO E 1/2 NE 1/4

Station	Distance	Course	Station	Distance	Course	Station	Distance	Course
171+62 ^R	191 ^R	S 35 1/2 E	178+81 ^L	130 ^R	N 79 1/2 W	183+95 ^R	105 ^R	S 08 1/2 E
173+53 ^R	111 ^R	S 21 1/2 E	180+12 ^R	36 ^R	S 80 1/2 W	185+01 ^L	112 ^R	S 16 1/2 E
174+65 ^R	142 ^R	S 12 E	180+48 ^R	50 ^R	S 24 W	186+13 ^R	102 ^R	S 16 E
176+07 ^R	144 ^R	S 02 3/4 E	180+98 ^R	128 ^L	S 65 1/2 E	187+16 ^R	96 ^R	S 02 E
177+52 ^R	99 ^R	S 18 1/2 W	182+27 ^R	110 ^R	S 56 1/2 E	188+12 ^R	51 ^R	S 19 1/2 W
178+51 ^R	30 ^L	S 59 3/4 W	183+37 ^R	58 ^L	S 16 3/4 E	188+64 ^R		
178+81 ^L								

26 35
27 34

SCHOFIELD ROAD NO. 55
SCHOFIELD - TEN MILE SECTION
SEC'S 26-27-34, T22 S, R12 W
DOUGLAS COUNTY, OREGON
OFFICE OF COUNTY ENGINEER
January 1950
Sheet No. 2

RD55PR02