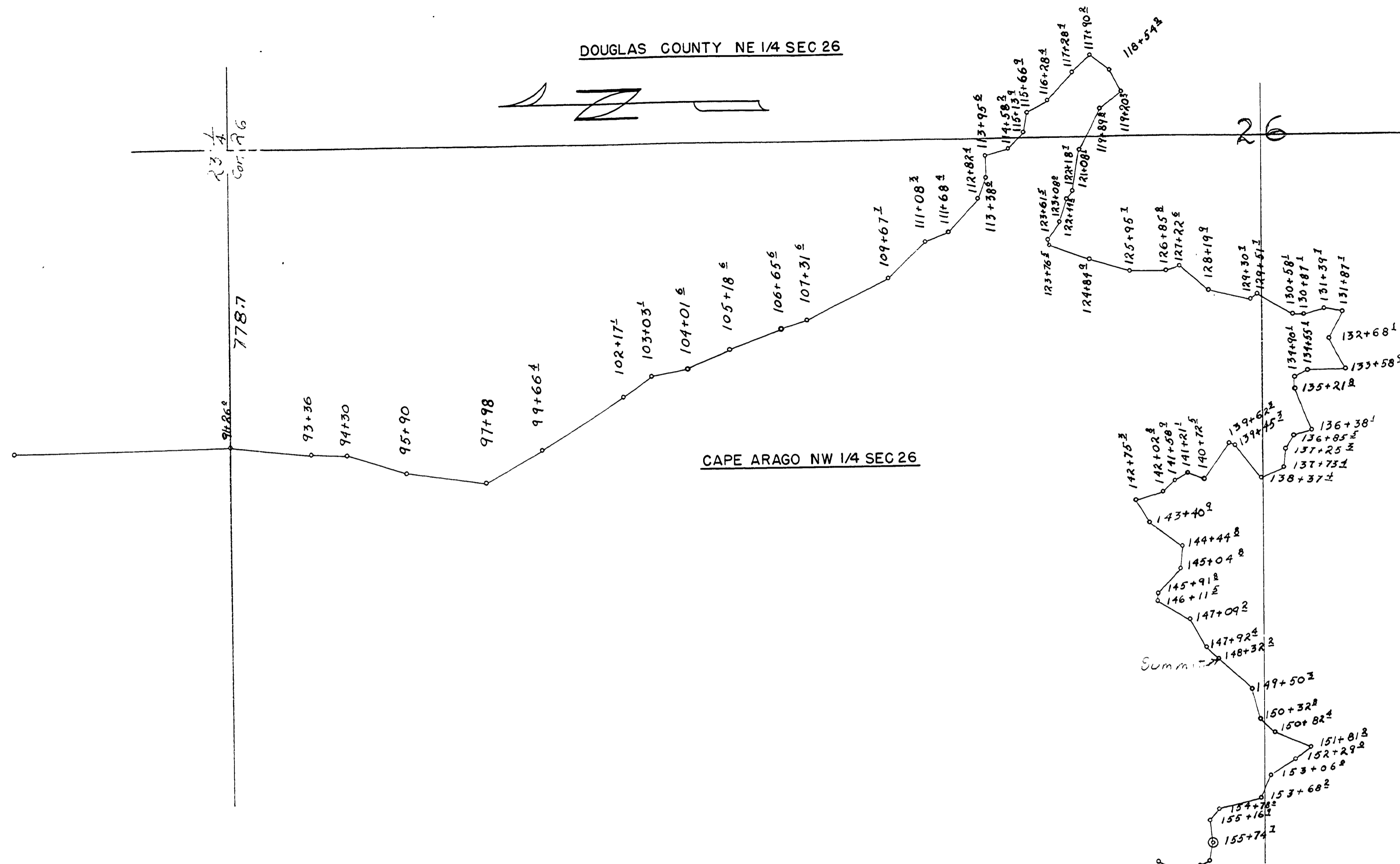
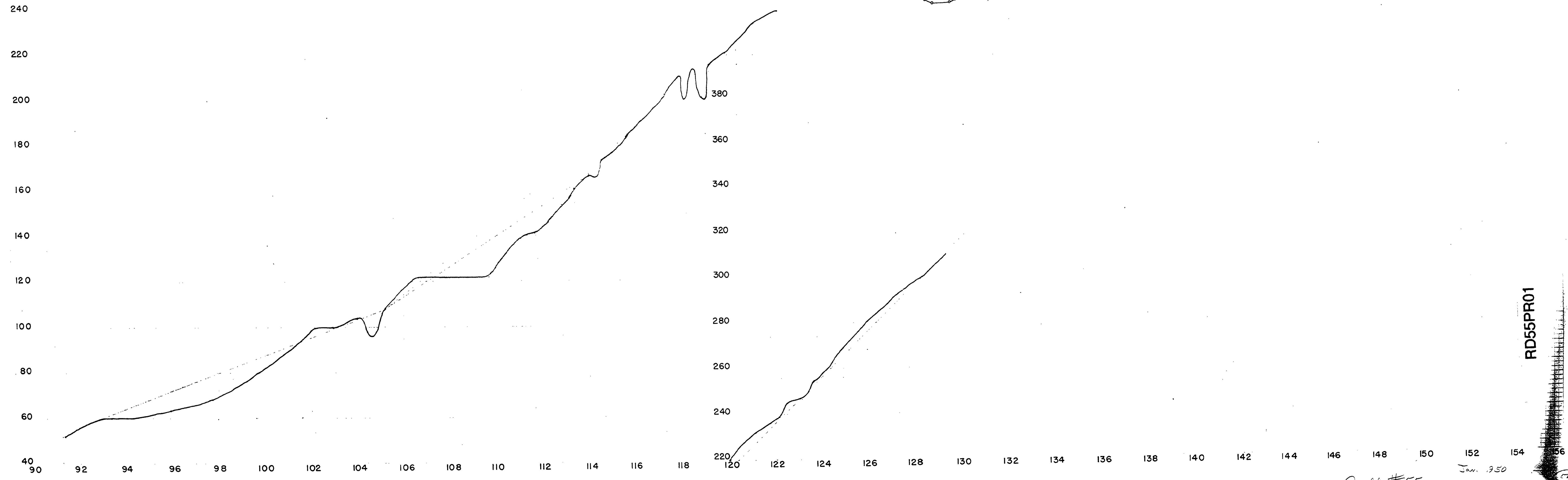


DOUGLAS COUNTY NE 1/4 SEC 26



Station	Distance	Course	Station	Distance	Course	Station	Distance	Course
91+26°			118+54 ²	66°	S 65 1/2 W	130+87 ²	52°	S 17 E
93+36°	210°	S 06 1/2 W	119+20 ²	69°	N 36 1/2 W	131+39 ²	48°	S 11 W
94+30°	99°	S 02 1/2 W	119+89 ²	118°	N 63 1/2 W	131+87 ²	80°	N 60 W
95+90°	160°	S 17 W	121+08 ²	110°	N 81 W	132+68 ²	90°	S 61 1/2 W
97+98°	208°	S 07 1/2 W	122+18 ²	25°	N 54 1/2 W	133+58 ²	96°	N 01 W
99+66°	168°	S 31 E	122+44 ²	63°	N 72 W	134+55 ²	35°	N 29 1/2 W
102+17 ¹	250°	S 33 E	123+08°	53°	N 56 W	134+90 ²	31°	S 87 W
103+03 ¹	86°	S 35 1/2 E	123+61°	15°	S 78 W	135+21 ²	116°	S 70 W
104+01°	98°	S 12 E	123+76°	108°	S 20 1/2 W	136+38 ²	47°	N 17 W
105+18°	117°	S 24 E	124+84°	110°	S 16 1/2 W	136+85°	39°	N 60 1/2 W
106+65°	147°	S 22 E	125+95°	90°	S 00 1/2 E	137+25°	48°	N 84 W
107+31°	66°	S 19 E	126+85°	36°	S 16 E	137+73°	64°	N 23 1/2 W
109+67°	236°	S 27 E	127+22°	97°	S 40 W	138+37°	107°	N 53 E
111+08°	140°	S 44 E	128+19°	110°	S 13 W	139+45°	17°	N 17 1/2 E
111+68°	60°	S 23 1/2 E	129+30°	21°	S 37 E	139+62°	110°	N 56 1/2 W
112+82°	114°	S 47 1/2 E	129+51°	106°	S 31 W	140+72°	48°	N 19 E
113+38°	56°	S 69 E	130+58°	29°	S 01 W	141+21°		
113+95°	57°	N 88 1/2 E	130+87°					
114+58°	62°	S 17 E						
115+13°	55°	S 47 1/2 E						
115+66°	53°	S 79 1/2 E						
116+28°	61°	S 29 1/2 E						
117+28°	99°	S 49 E						
117+90°	62°	S 45 1/2 E						
118+54°	64°	S 37 1/2 W						

SCHOFIELD ROAD NO. 55
 SCHOFIELD- TEN MILE SECTION
 SEC'S 26-27-34, T22 S, R12 W
 DOUGLAS COUNTY, OREGON
 OFFICE OF COUNTY ENGINEER
 January 1950
 Sheet No. 1



RD55PR01

Jan. 1950
 C. R. #55
 Jan. 1950