

SCHOFIELD ROAD #55
T22S R12W SEPT. 1954

NE 1/4 of NW 1/4

SE 1/4 of NW 1/4

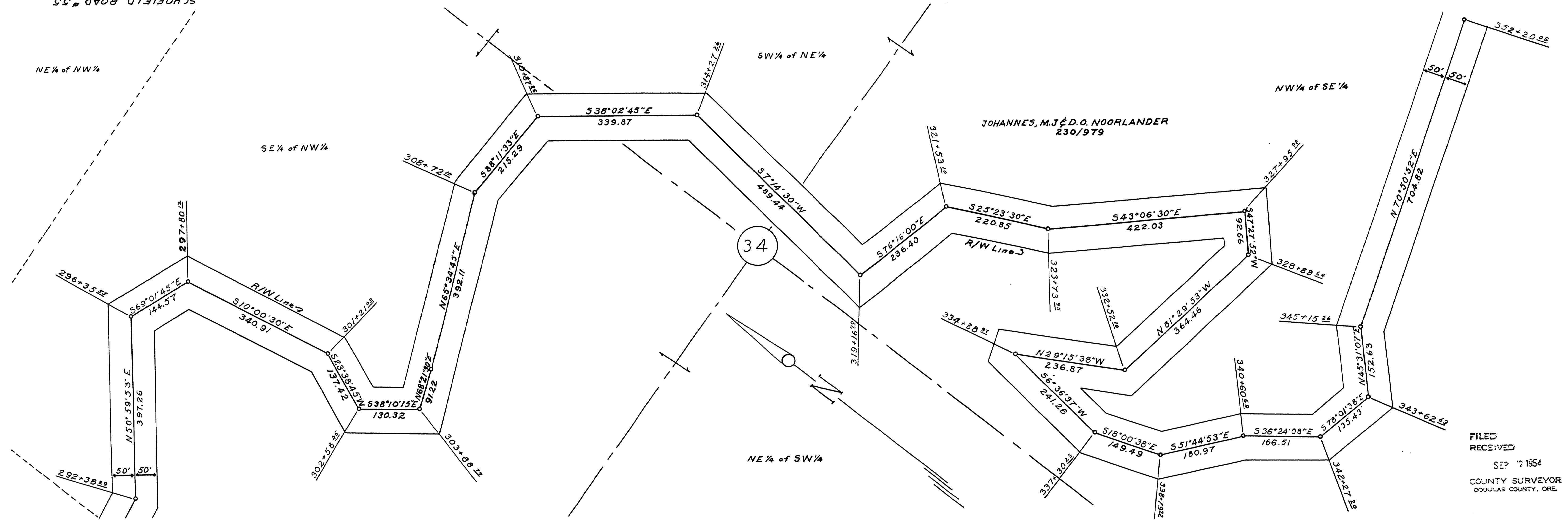
SW 1/4 of NE 1/4

NW 1/4 of SE 1/4

34

JOHANNES, M.J. & D.O. NOORLANDER
230/979

FILED
RECEIVED
SEP 17 1954
COUNTY SURVEYOR
DOUGLAS COUNTY, ORE.



M.P. 9.73 - 11.00

SCHOFIELD ROAD #55
T22S R12W SEPT. 1954
Co Rd #55 sh. 8 of 8 (89)

09931106

