

SCHOFIELD ROAD #55
T.22S, R.12W, W.M.

J. George & Lillian Parker

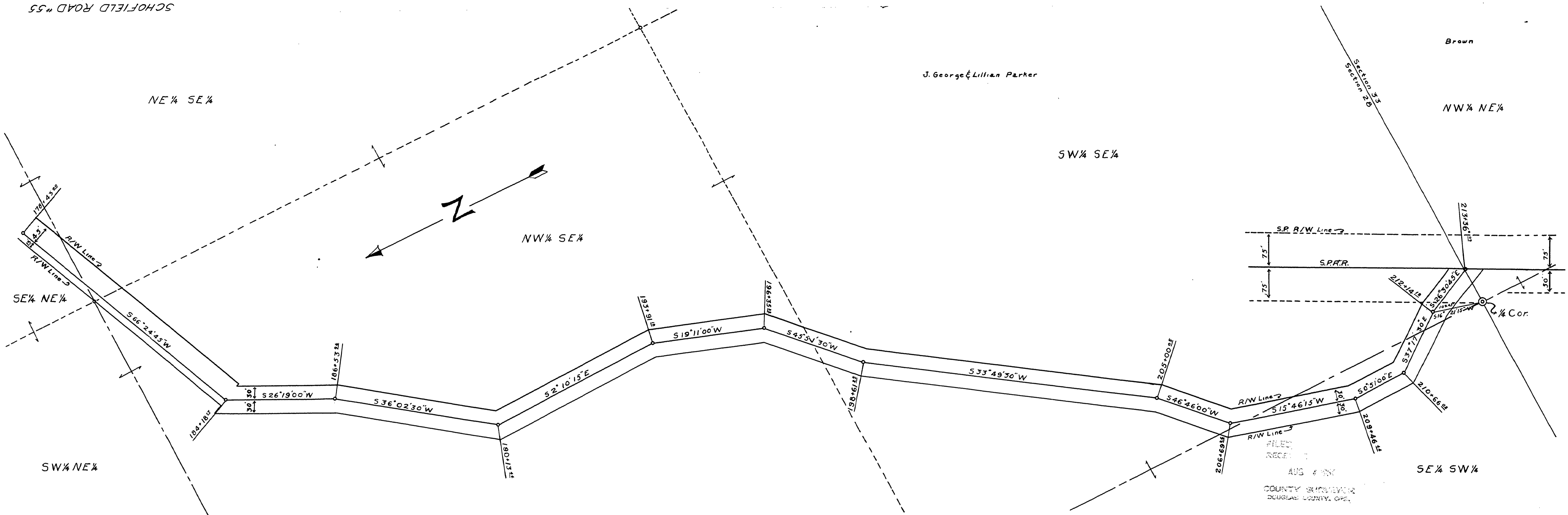
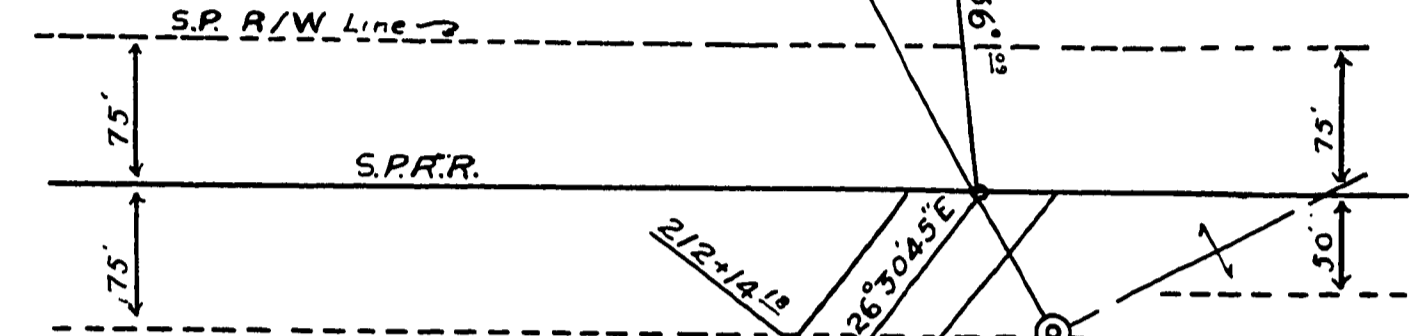
Brown

NW 1/4 NE 1/4

SW 1/4 SE 1/4

NE 1/4 SE 1/4

NW 1/4 SE 1/4



SW 1/4 NE 1/4

SE 1/4 SW 1/4

AUG 4 1984
COUNTY CLERK
DOUGLAS COUNTY, ORE.

M.P. 7.78-8.44

SCHOFIELD ROAD #55
T.22S, R.12W, W.M.
Co. Rd #55

07780844

54
55

