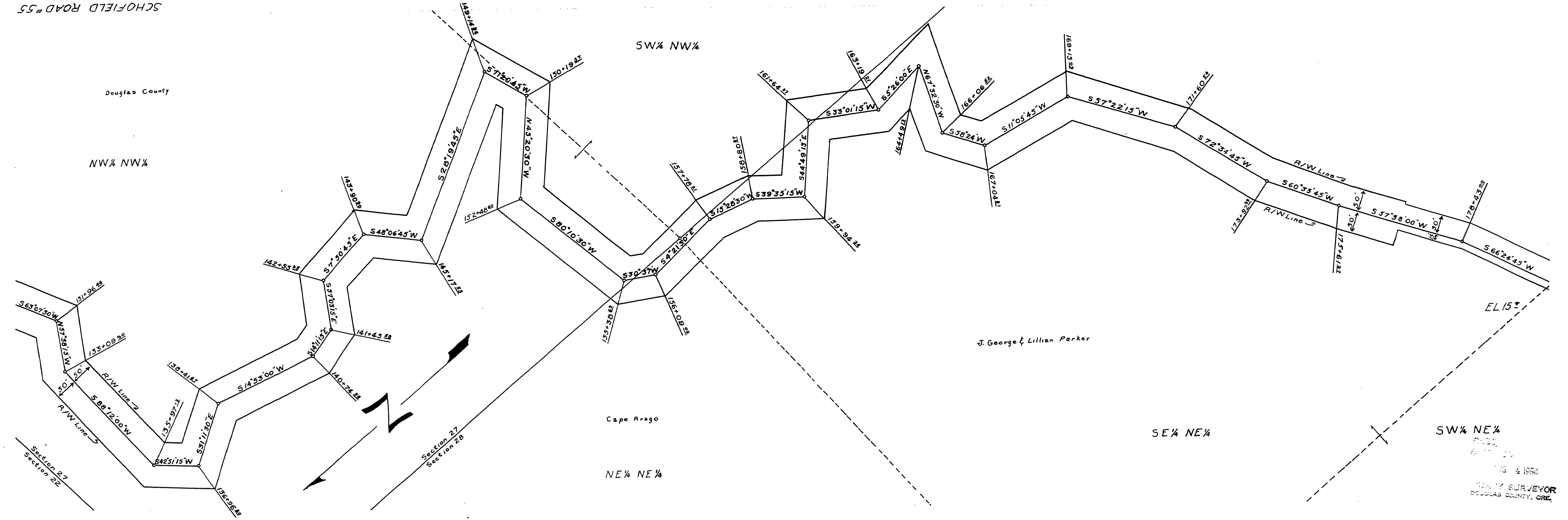


SCHOFIELD ROAD #55  
T.22S, R.12W, W.M.



Douglas County

NW 1/4 NW 1/4

SW 1/4 NW 1/4

Cape Arago

NE 1/4 NE 1/4

J. George & Lillian Parker

SE 1/4 NE 1/4

SW 1/4 NE 1/4

PLAT  
NO. 61854  
COUNTY SURVEYOR  
DOUGLAS COUNTY, ORE.

M.P. 6.90-7.78

SCHOFIELD ROAD #55  
T.22S, R.12W, W.M.  
G.P.D. # 55 en. 488 (64)

06900778

