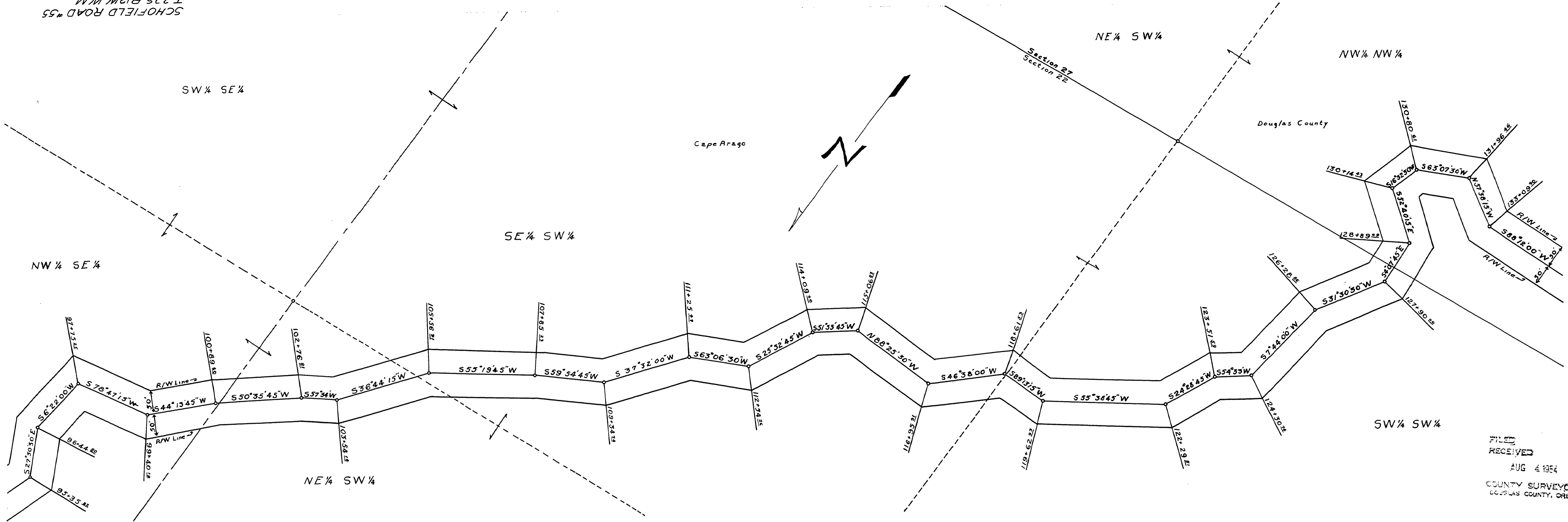


SCHOFIELD ROAD #55
T.225, R.12W, W.M.



FILED
RECEIVED
AUG 4 1964
COUNTY SURVEYOR
DOUGLAS COUNTY, ORE.

M.P. 6.21-6.90

SCHOFIELD ROAD #55
T.225, R.12W, W.M.
G.R. #55 01.3018

06210690

