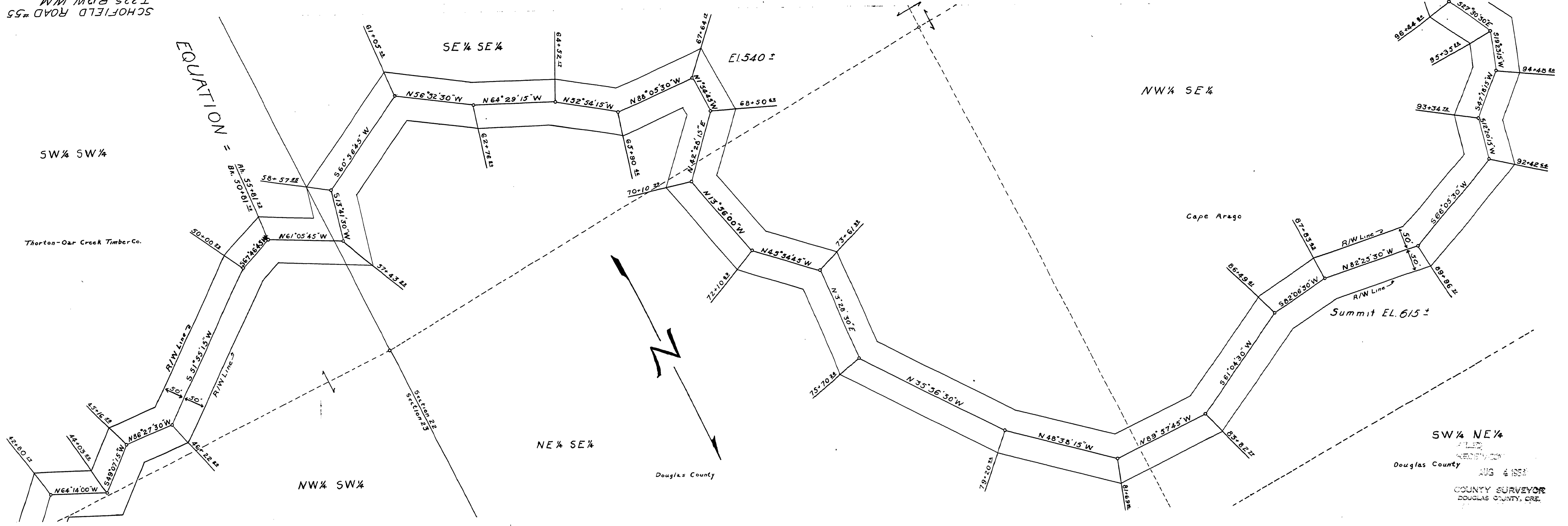


60

2

SCHOFIELD ROAD #55  
T.225, R.12W, W.M.



SW 1/4 NE 1/4  
 FILED  
 AUG 6 1958  
 Douglas County  
 COUNTY SURVEYOR  
 DOUGLAS COUNTY, ORE.

M.P. 5.21-6.21

SCHOFIELD ROAD #55  
 T.225, R.12W, W.M.  
 Co. Rd. #55 sheet 2 of 8

05210621

54

62

