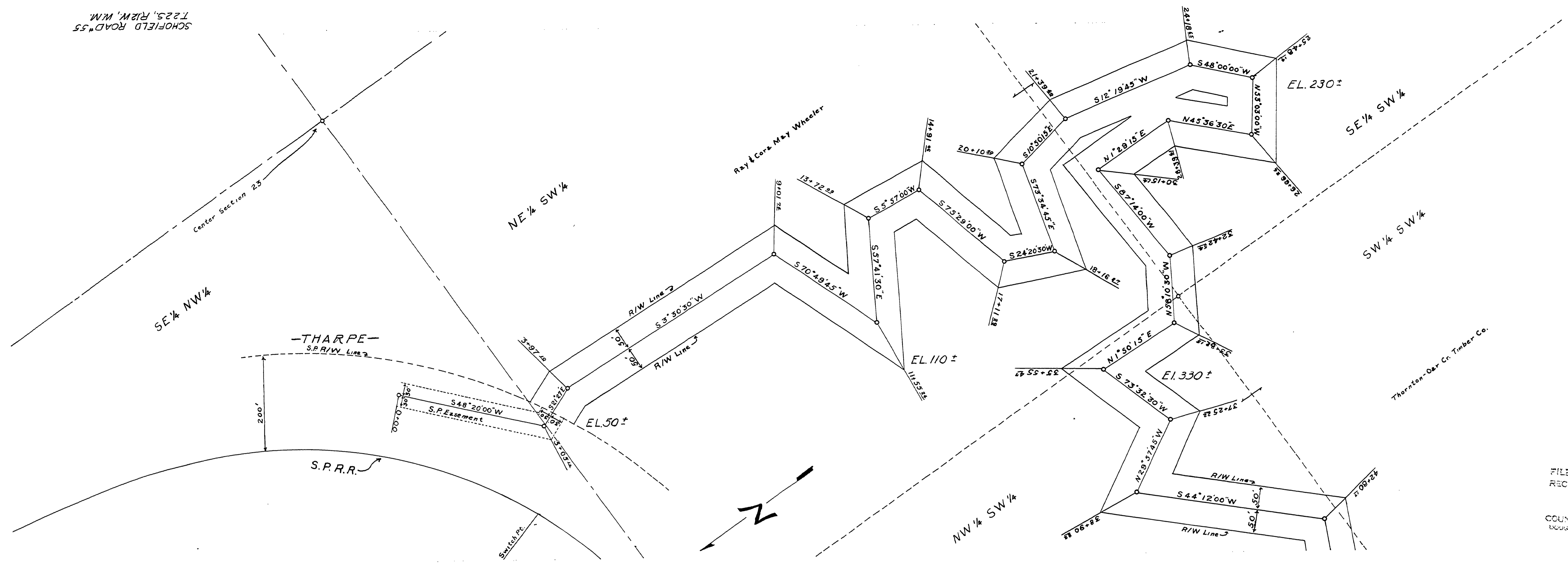


SCHOFIELD ROAD #55
T.22S, R.12W, W.M.



FILED
RECEIVED
AUG 4 1954
COUNTY SURVEYOR
BOVARD COUNTY, ORE.

M.P. 4.40-5.21

SCHOFIELD ROAD #55
T.22S, R.12W, W.M. 1954
Co. Rd. #55 211 of 2 (21)

04400521

