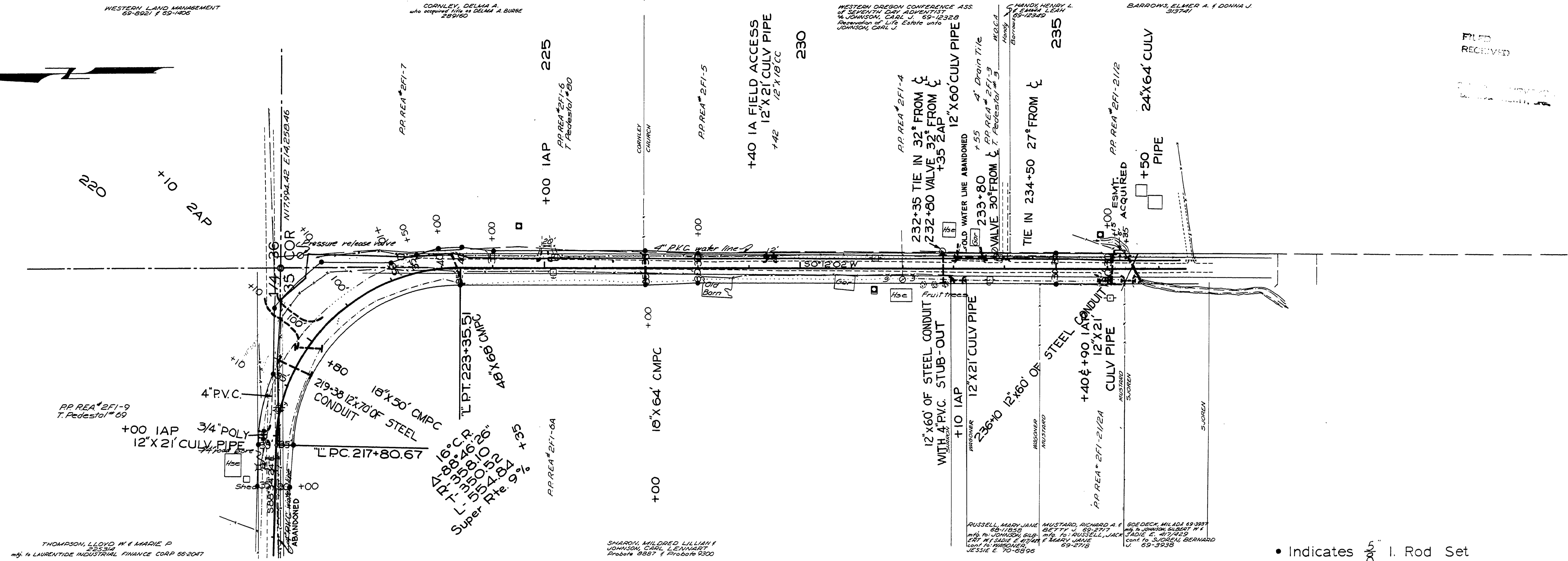


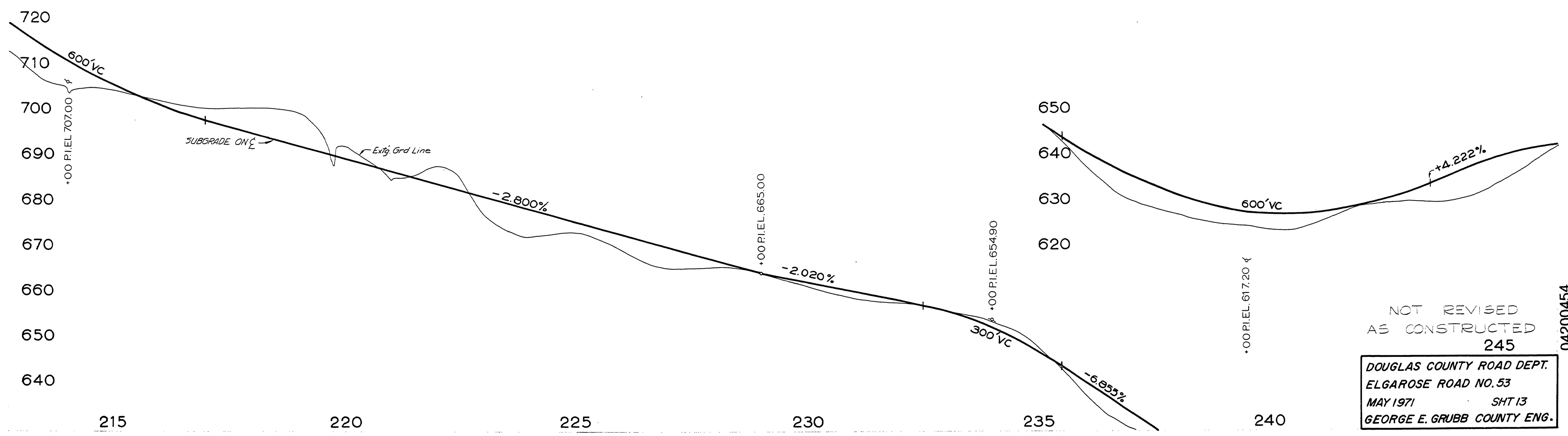
SEC 35,36 T26S R7W W.M.

RD 53



FILED
RECEIVED

• Indicates $\frac{5}{8}$ " I. Rod Set



NOT REVISED
AS CONSTRUCTED
245
DOUGLAS COUNTY ROAD DEPT.
ELGAROSE ROAD NO. 53
MAY 1971 SHT 13
GEORGE E. GRUBB COUNTY ENG.

04200454

M.P. 4.20 - 4.54

Co. Rd # 53 MAY, 1971 Sht. 13 of 14 (23)