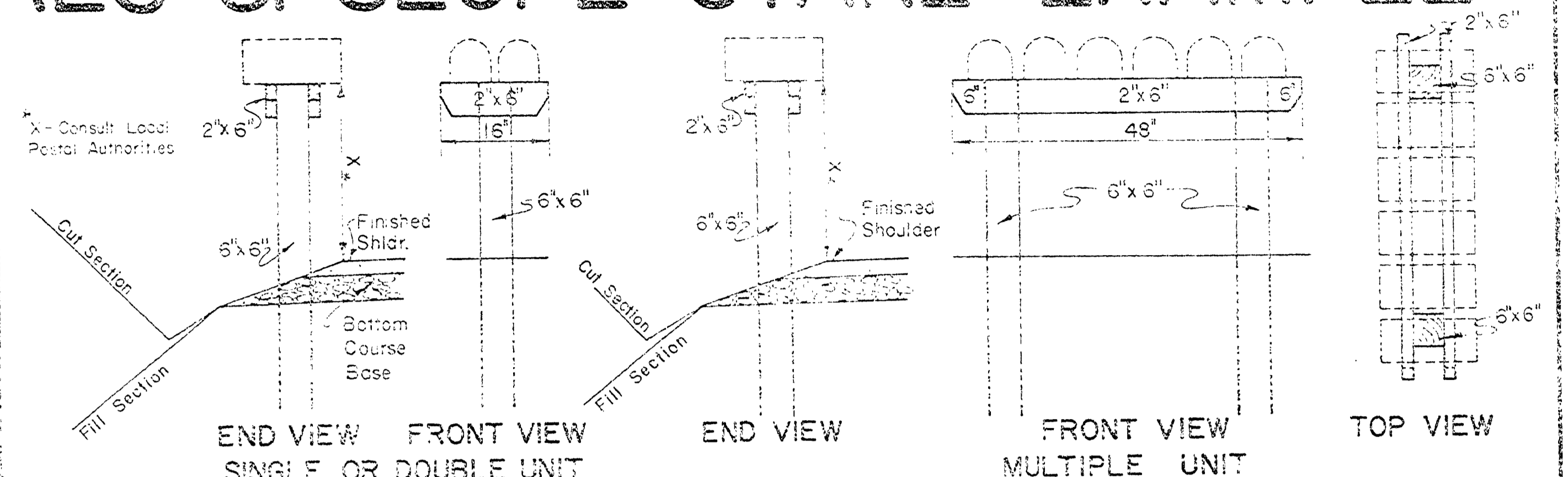


# PIPE LIST, MAIL BOX STAND, DRIVEWAY TYPICALS & SLOPE STAKE EXAMPLE

STATION	DIAMETER INCHES	LENGTH FEET	MATERIALS						TRENCH EXC. CU. YDS.	REMARKS STRUTTED END TREAT- MENT, IMPERFECT TRENCH ETC.
			ALUMINUM			CONCRETE				
			ANNULAR CORR. GAGE	HELICAL CORR. GAGE	ASPHALT COATED	ANNULAR CORR. GAGE	HELICAL CORR. GAGE	ASPHALT COATED		
33+50	36	64						65		
41+85	12	21						3	D/W	
43+22	18	60						12		
52+25	36	56						6		
56+80	30	44						3	D/W	
59+00	12	21						3	D/W	
59+20	12	21						3	D/W	
61+75	48	52						35	WITH SLOPED ENDS	
62+80	12	21						2	D/W	
66+40	12	21						3	D/W	
68+80	12	21						3	D/W	
71+00	18	60						20		
71+85	12	60						4	D/W	
77+40	12	44						6	D/W	
79+15	18	48						25		
83+10	12	21						3	D/W	
89+00	18	48						12		
90+65	12	21						3	D/W	
94+50	18	52						5		
95+80	18	72						10	RD APPROACH	
97+85	12	21						5	D/W	
100+00	12	21						3	D/W	
105+70	12	21						3	D/W	
106+50	18	52						14		
106+70	12	21						4	D/W	
109+75	18	72						30		
117+70	12	21						4	D/W	
120~ -130~	6	100							PERFORATED DRAIN PIPE	
128+50	18	45						10		
131+50	18	45						20		
142+75	12	72						14	D/W	
146+20	18	64						17		
150+40	18	60						20		
151+70	18	24						6	D/W	
151+80	18	24						6	D/W	
153+50	18	24						6	D/W	
154+75	18	24						6	D/W	
156+20	12	34						8	D/W	
156+35	12	21						4	D/W	
165+40	12	21						3	D/W	
166+60	12	21						3	D/W	
171+20	12	21						3	D/W	
172+25	12	21						3	D/W	
178+30	12	21						3	D/W	
178+40	12	21						3	D/W	
179+50	12	21						3	D/W	
184+00	18	56						10		

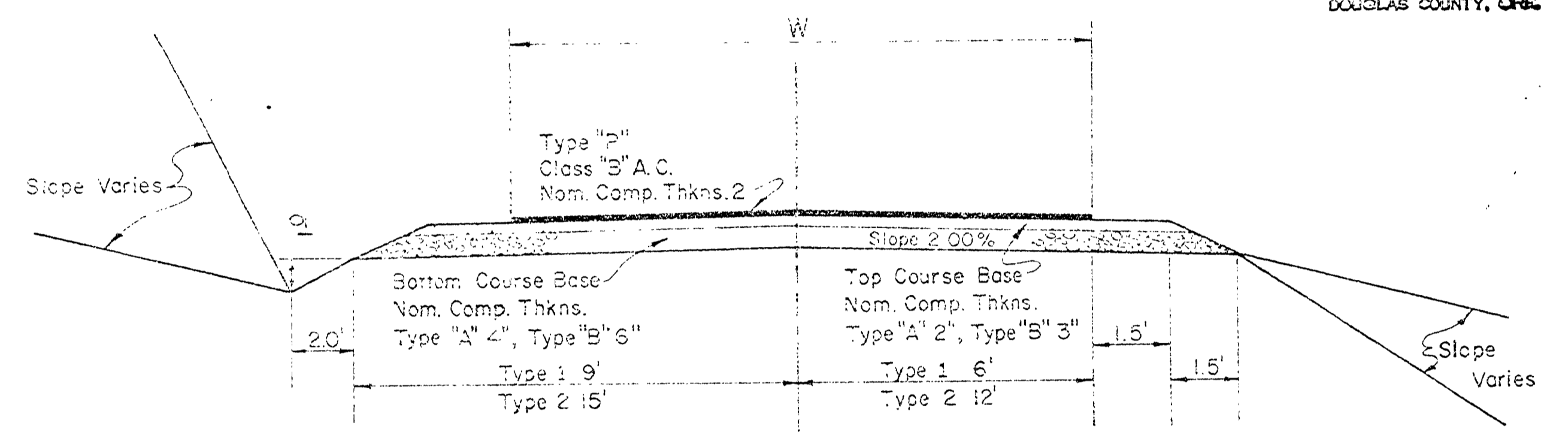
NOTE: PIPE LENGTHS & LOCATIONS TO BE VERIFIED IN FIELD.



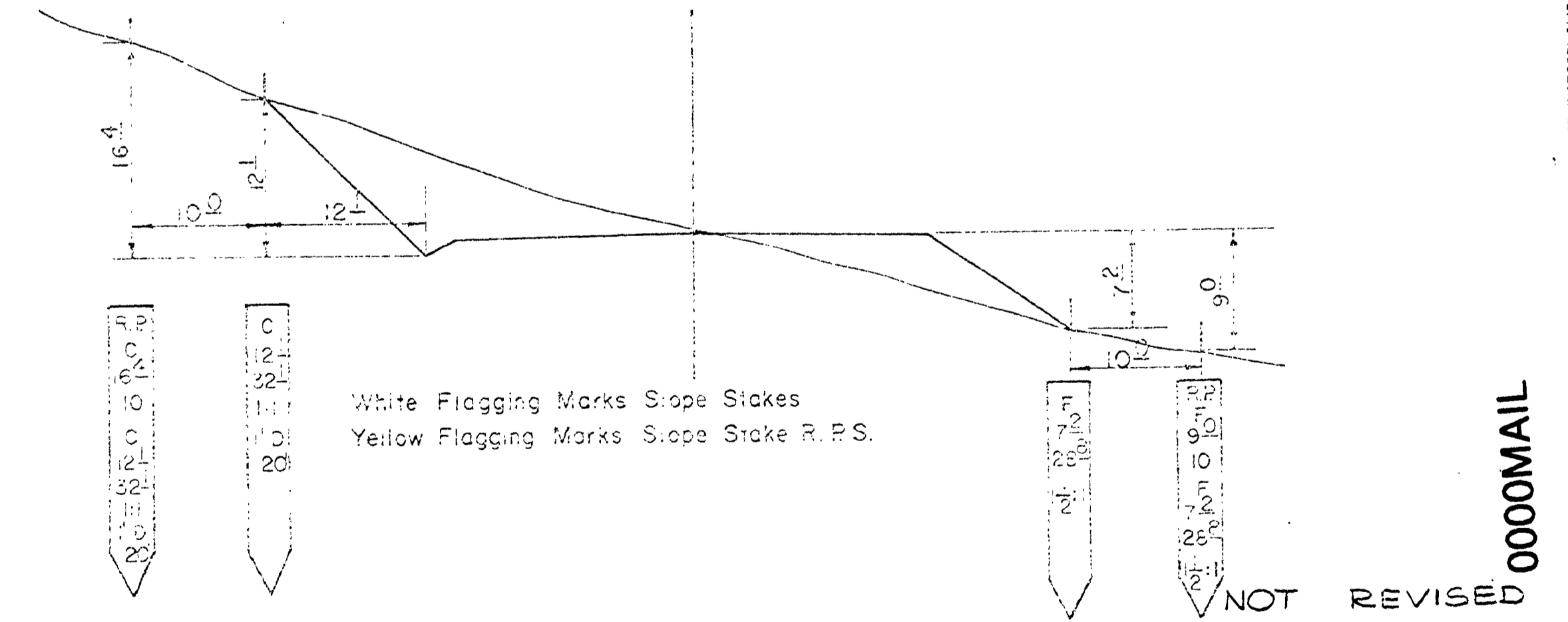
NOTE: All Posts to be of Cedar, Posts to be Set a Minimum of 24" Below the Surface of the Ground.

## TYPICAL MAIL BOX STAND

FILED  
RECEIVED  
JUL 13 1975  
COUNTY SURVEYOR  
DOUGLAS COUNTY, ORE.



## RURAL DRIVEWAY & ROAD APPROACH STANDARD



## SLOPE STAKE EXAMPLE

TYPICAL MARKING BACK OF STAKE.

NOT REVISED AS CONSTRUCTED

JOB NAME ELGAROSE RD  
 JOB NUMBER RD #53  
 DATE MAY 1971 SHT 4

Douglas County Road Dept.  
 PIPE LIST, MAIL BOX STAND RURAL DRIVEWAY & SLOPE STAKE EX.  
 Date: May 1969 Std. Dwg. 1

May 1971  
G. Rd. #53 sht. 4 of 14 (40)