

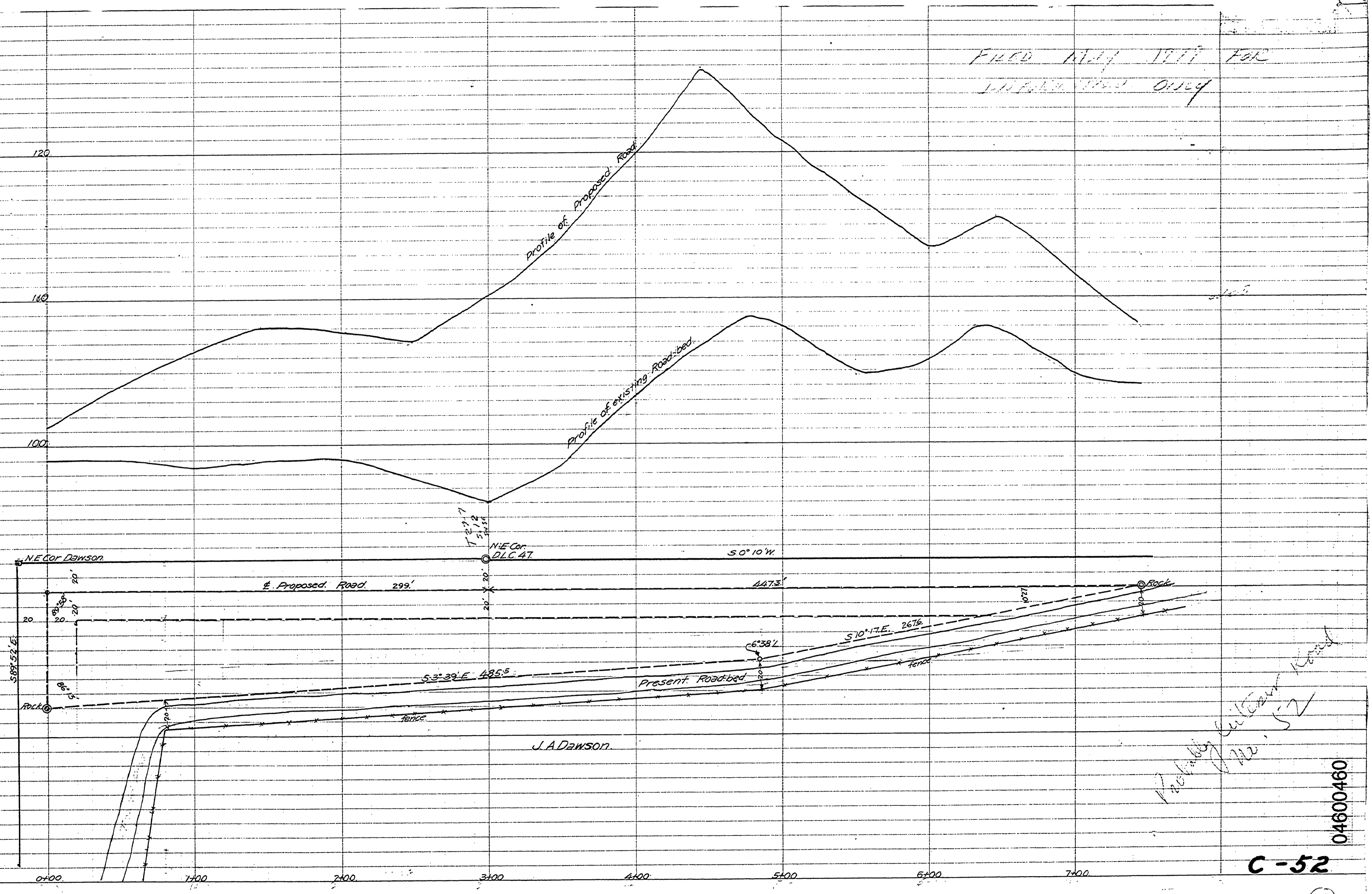
DOUGLAS CO. ORE.  
 MAP AND PROFILE  
 OF  
 PROPOSED ROAD CHANGE  
 IN  
 T27S R7W W.M.

Scales: Hor. 1" = 40 ft.  
 Ver. 1" = 40 ft.

Feb. 1915

Surveyed by F.J. Cole, Deputy.  
 Plotted by J.W. Cole.

FIELD MAP 1911 FOR  
 WILSON'S ROAD ONLY



04600460

C-52

5

~ H.P. 446

T27-7 S.12 FEB 1915