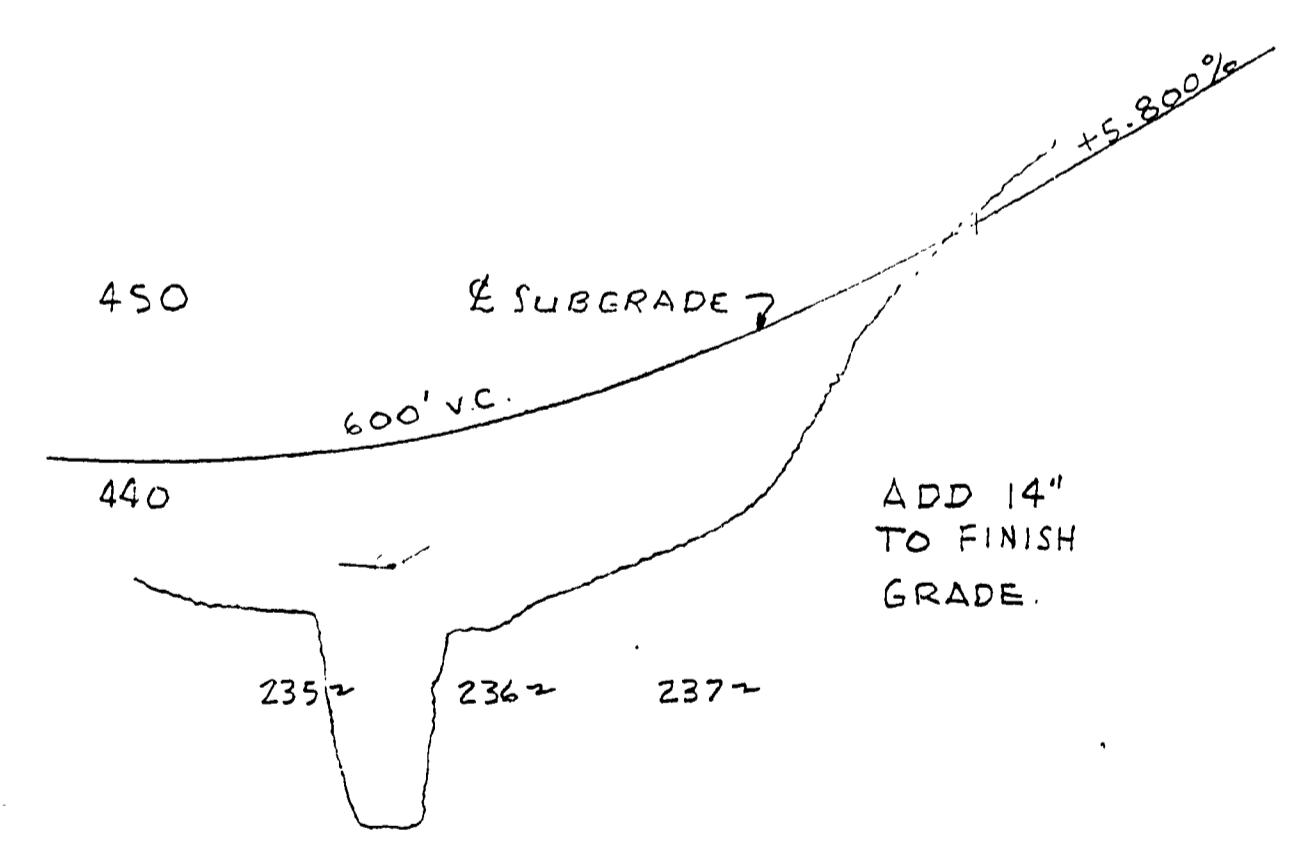
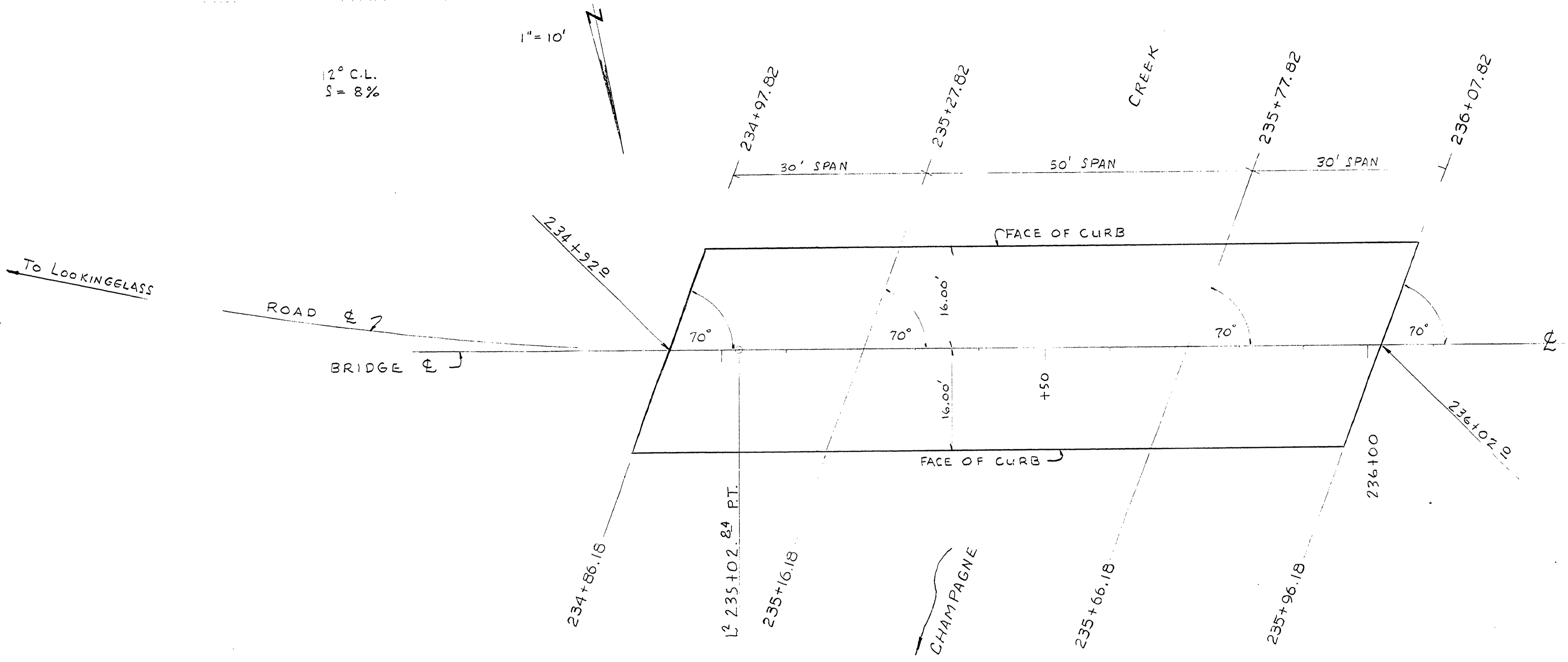


FILED
RECEIVED
JUN 16 1970
COUNTY SURVEYOR
MELROSE COUNTY, OR.

TABLE OF ELEVATIONS

STA.	16° LT	℄	16° RT
234+86.18			444.77
234+92		43.78	
234+97.82	442.89		
235+16.18			444.85
235+22		444.05	
235+27.82	443.34		
235+66.18			445.23
235+72		444.80	
235+77.82	444.44		
235+96.18			445.63
236+02		445.41	
236+07.82	445.20		

ELEVATIONS SHOWN ARE TOP OF CONC. DECK;
(FIN. GRADE MINUS 2").



+50 P.I. E.L.
437.00

170 180 190 200 210 220 230 240 250 260 270 280 290 300 236+ 10 120

M.P. 4.08 - 4.10

NOT REVISED
AS CONSTRUCTED

LOOKINGGLASS - MELROSE # 52
BRIDGE ON Sheet 13-A
CHAMPAGNE CR.
December 14 1970

G. AD. # 52
JUNE, 1970
Sht. 13-A of 14 (55)

04080410