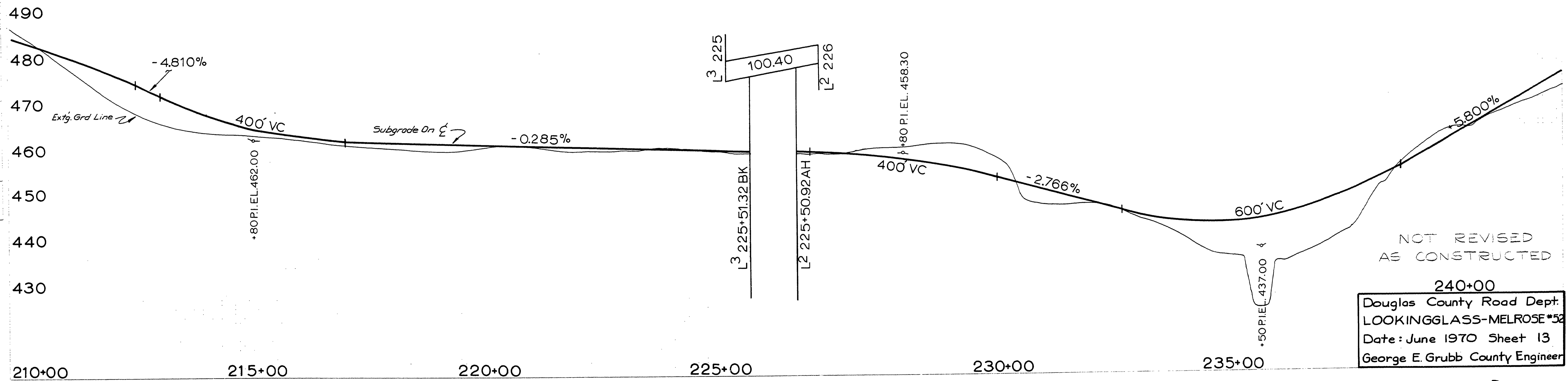
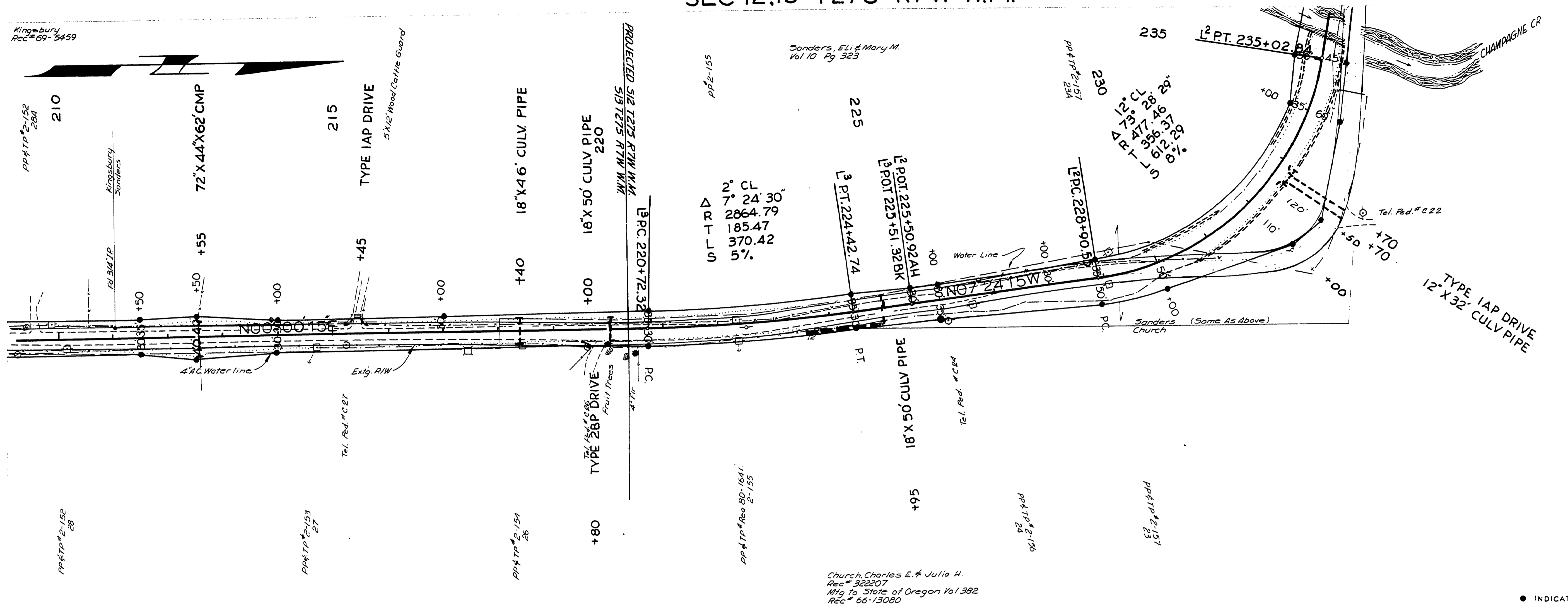


SEC 12.13 T27S R7W W.M.

MP4

RD 52

FILED
RECEIVED
JUL 15 1970
COUNTY SURVEYOR
DOUGLAS COUNTY, ORE.



NOT REVISED
AS CONSTRUCTED

240+00
Douglas County Road Dept.
LOOKINGGLASS-MELROSE*52
Date: June 1970 Sheet 13
George E. Grubb County Engineer

03610408

June, 1970
Co. Rd. #52
Sht. 13 of 14

M.P. 3.61-4.08

PLAN

PROFILE