

SEC 13 T27S R7W W.M.

RD 52

Moon, Edwin L & Minnie G Vol 137 Pg 110
On Contract to:
Humbert, Glen D & Phoebe Rec # 66-1891

Note A
Gaddy, Goldie Rec # 68-351
Right, Title & Interest,
Harold L & Aritha L Shepard &
Roy R & Beulah F Phillips
Rec # 69-5459

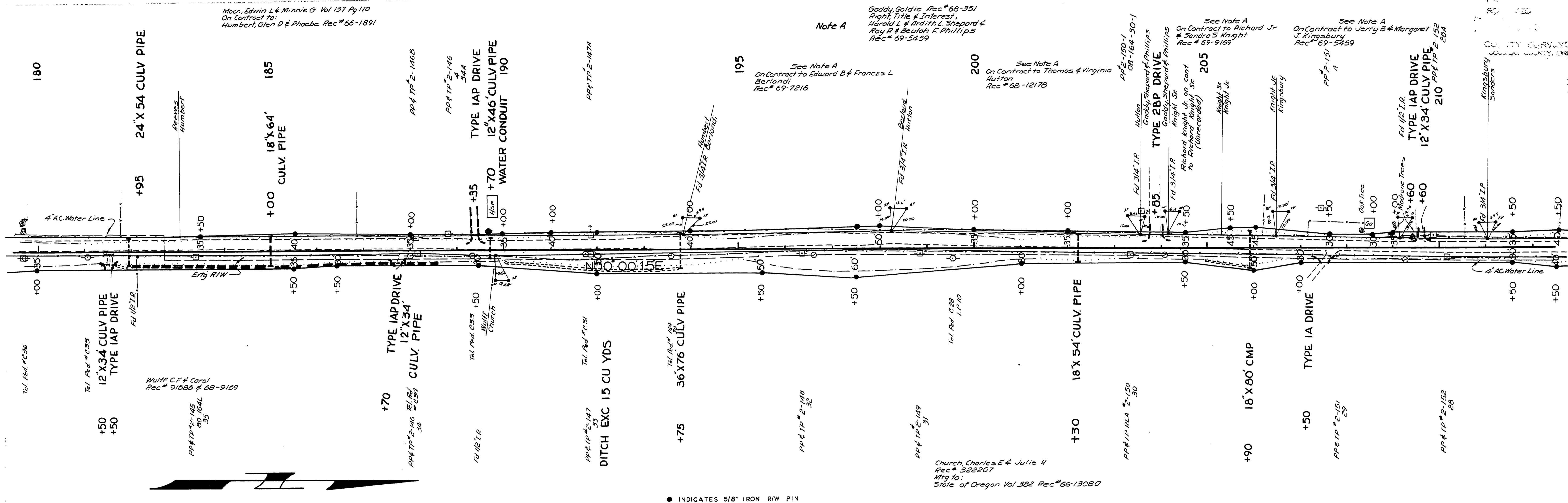
Note A
See Note A
On Contract to Edward B & Frances L
Berlandi
Rec # 69-7216

Note A
See Note A
On Contract to Thomas & Virginia
Hutton
Rec # 68-12178

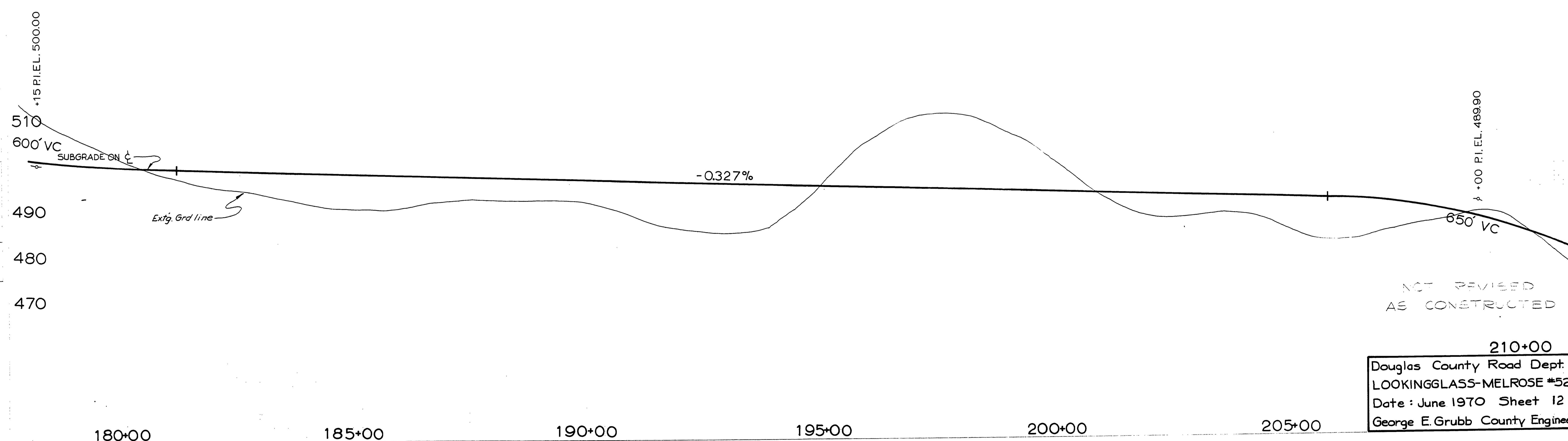
Note A
See Note A
On Contract to Richard Jr
& Sandra S Knight
Rec # 69-9169

Note A
See Note A
On Contract to Verry B & Margaret
J. Kingsbury
Rec # 69-5459

Note A
See Note A
On Contract to Verry B & Margaret
J. Kingsbury
Rec # 69-5459



● INDICATES 5/8" IRON R/W PIN



NOT REVISED
AS CONSTRUCTED

210+00
Douglas County Road Dept.
LOOKINGGLASS-MELROSE #52
Date: June 1970 Sheet 12
George E. Grubb County Engineer

03040361

JUNE 1970
G. Rd #52
Sht. 12 of 17

M.P. 3.04 - 3.61