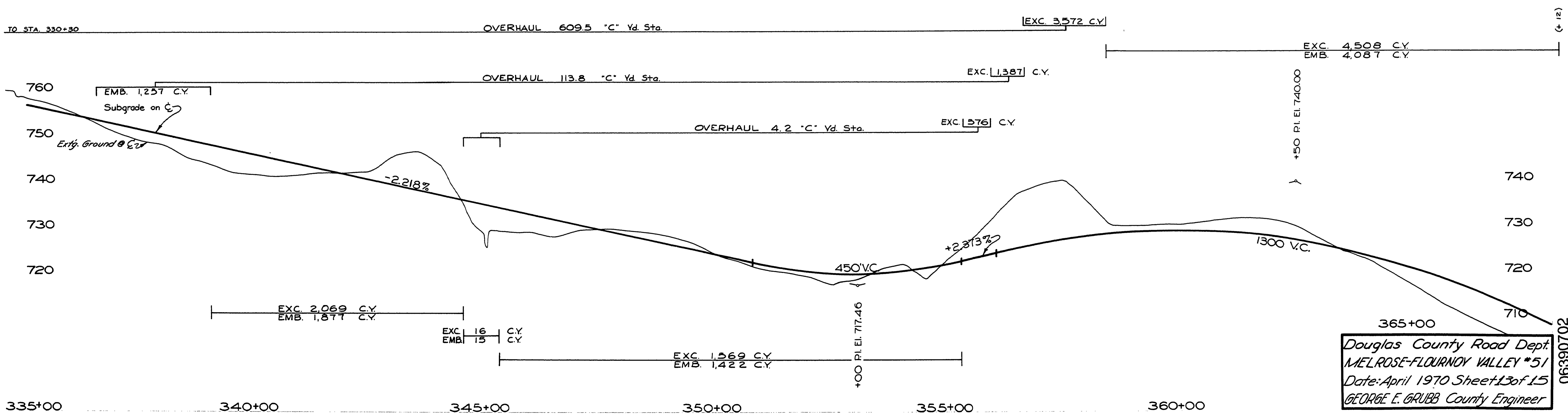


REED, HAYWARD & MARJORIE J. 3/7/849

BARZIER, LEO J. & LOUISE H. 68-2343-Subj. to cont. to GIOVANNETTI, FRANK D. & RUTH E. & CRAWFORD, DANIEL M. & LOLA E. 67-7720

REED, HAYWARD & MARJORIE J. on cont. to COOPER, DARREL C. & KATHLEEN A. 66-5246

INDICATES 3/8" IRON ROD R.W. PIN
 NOTE: UTILITY POLES SUBJECT TO RELOCATION



Douglas County Road Dept.
 MELROSE-FLOURNOY VALLEY #51
 Date: April 1970 Sheet 13 of 15
 GEORGE E. GRUBB County Engineer

Co. Rd. # 51
 Apr. 1970
 sht. 13 of 15

M.P. 6.39-7.02

06390702