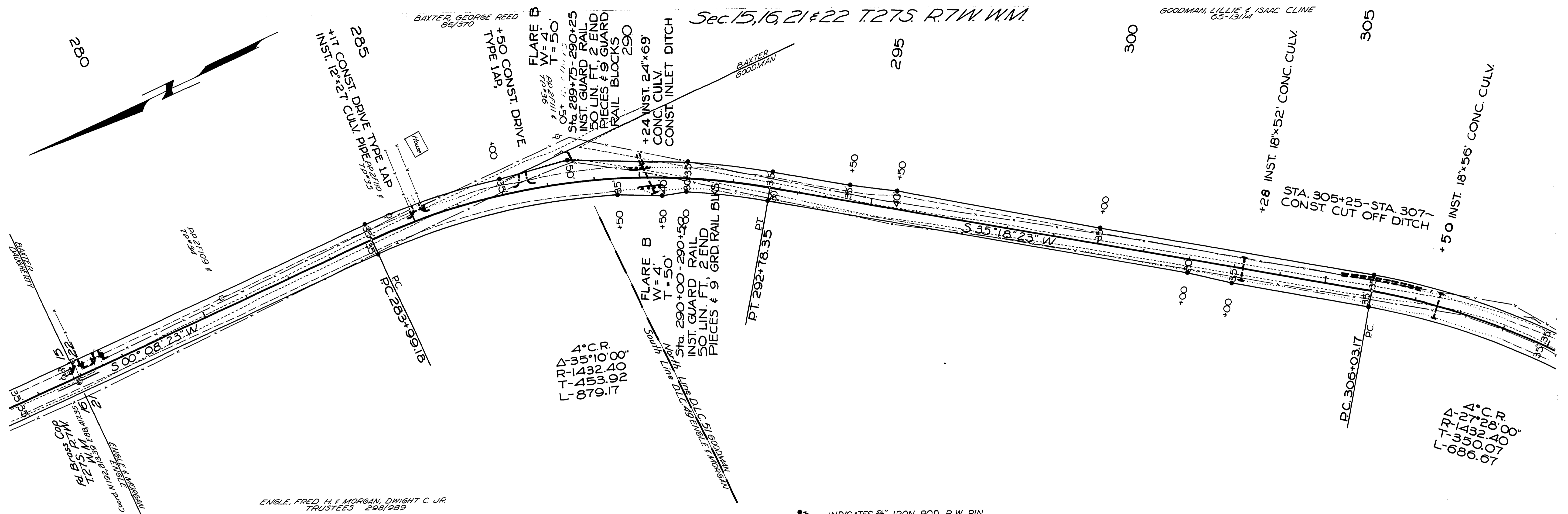


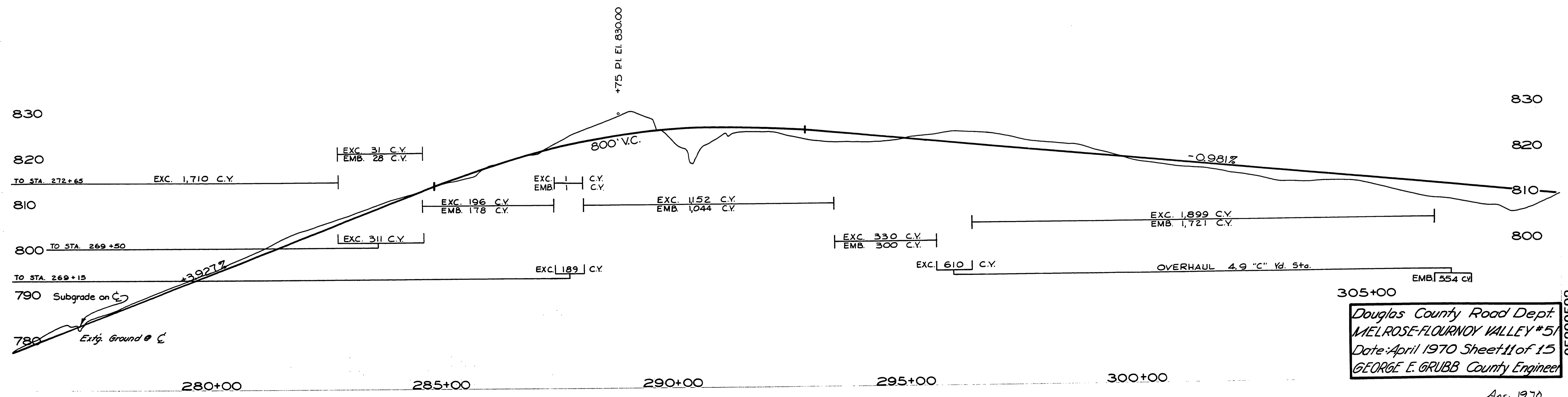
Sec. 15, 16, 21 & 22 T. 27 S. R. 7 W. W.M.



4° C.R.
 Δ-35° 10'
 R-1432.40'
 T-453.00'
 L-879.17'

4° C.R.
 Δ-35° 28'
 R-1432.40'
 T-350.00'
 L-686.07'

INDICATES 3/8" IRON ROD R.W. PIN
 NOTE: UTILITY POLES SUBJECT TO RELOCATION



Douglas County Road Dept.
 MELROSE-FLOURNOY VALLEY #51
 Date: April 1970 Sheet 11 of 15
 GEORGE E. GRUBB County Engineer

Co. Rd # 51
 Apr. 1970
 Sh. 11 of 15

M.P. 5.29-5.92

05290592