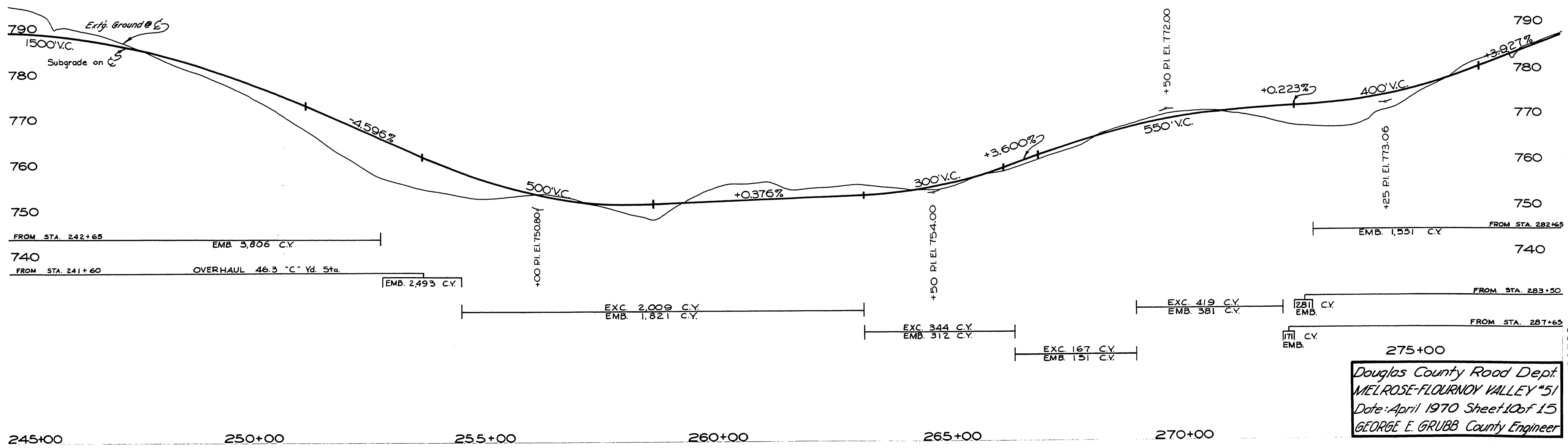
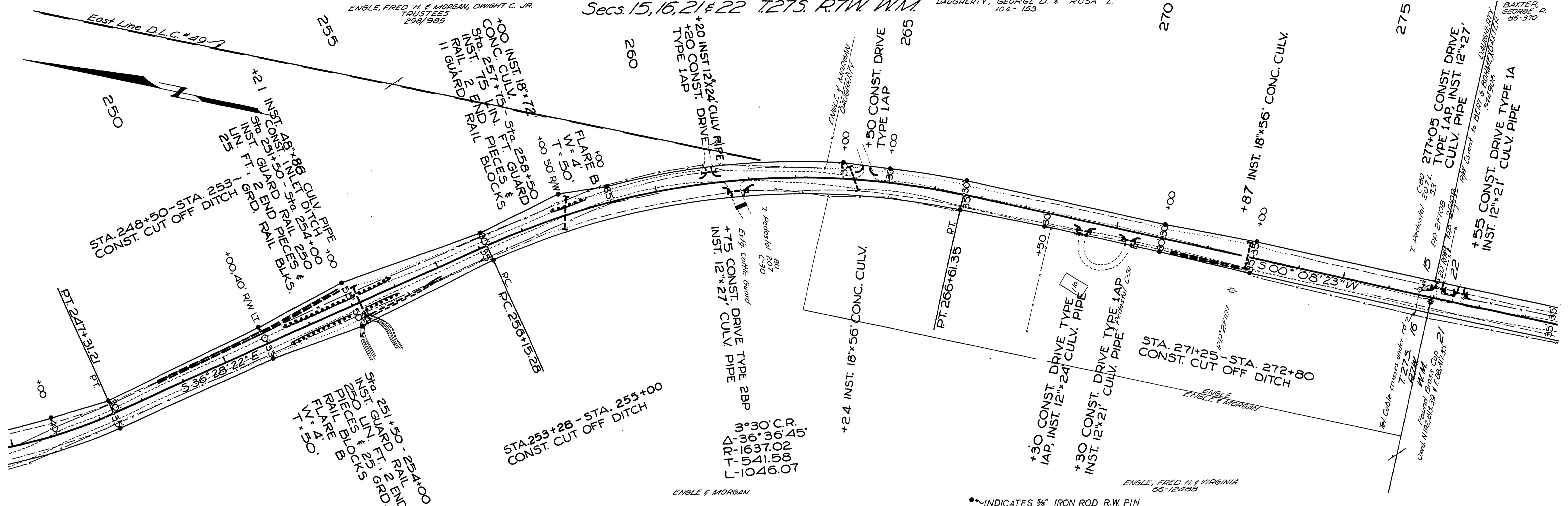


MP5

Secs. 15, 16, 21 & 22 T.27S. R.TW. W.M.

DAUGHERTY, GEORGE D. & ROSA L.
104-153

ENGLE, FRED H. & MORGAN, DWIGHT C. JR.
TRUSTEES
298/1989



Douglas County Road Dept.
MELROSE-FLOURNOY VALLEY #51
Date: April 1970 Sheet 10 of 15
GEORGE E. GRUBB County Engineer

Co. Rd #51
Apr. 1970
Sht. 10 of 15

04730529

M.P. 4.73-5.29