

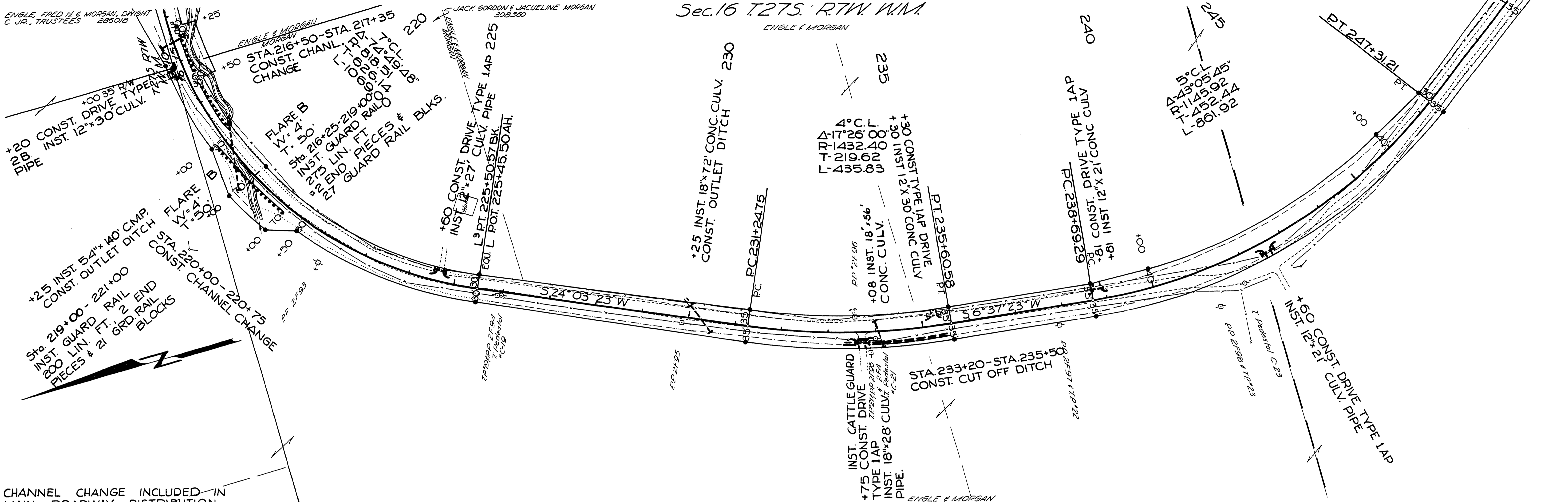
ENGLE, FRED H. & MORGAN, DWIGHT C. JR., TRUSTEES 286018

ENGLE & MORGAN

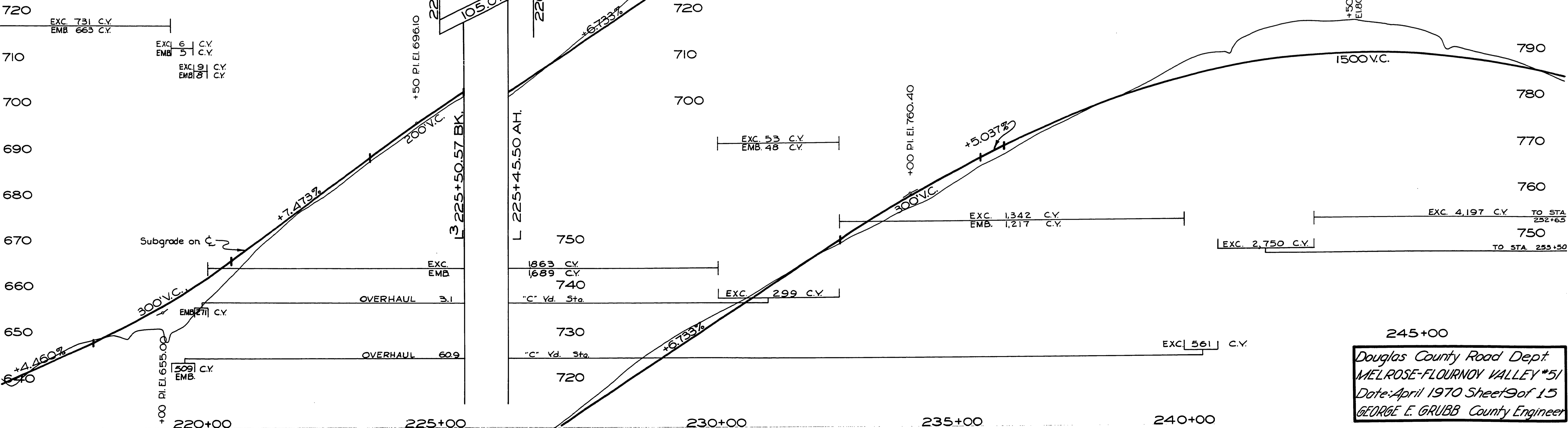
JACK GORDON & JACQUELINE MORGAN 308,360

Sec. 16 T275 RTW W.M.

ENGLE & MORGAN



CHANNEL CHANGE INCLUDED IN MAIN ROADWAY DISTRIBUTION FROM STA. 215+25



Douglas County Road Dept.
MELROSE-FLOURNOY VALLEY #51
Date: April 1970 Sheet 9 of 15
GEORGE E. GRUBB County Engineer

C. R. # 51
Apr. 1970
Sht. 9 of 15

M.P. 4.16 - 4.73

04160473